

Year 6 Spring Term 2024

This grid outlines the knowledge and skills that Year 6 children will gain throughout this term.

As readers we will:

Continue to solidify our understanding of retrieval, inference and language reading domains. In preparation for SATs, we will now also ensure that the children are focused on all five of the reading domains and can confidently use strategies for each one.



As mathematicians we will:

Apply our number skills to measure. This will involve calculating area and perimeter of both simple and compound shapes. Later in the term, we will be focusing on decimals and percentages. We will continue to recall our times tables in everything we do – please keep practising these at home!



As writers we will:

Continue to explore our Talk for Writing programme and the imitation, innovation and independent application stages. Within this, we will focus on both fiction and non-fiction writing, with some exciting text maps and stimuli to inspire our writing. This term we will be basing our writing on Macbeth by William Shakespeare.

As scientists we will:

Identify how scientists classify living things, including using the Linnean system as well as classification keys. We will further our knowledge by identifying microorganisms and how they grow.

As historians we will:

- Learn about the rise of Adolf Hitler and how the Nazis controlled many aspects of life in Germany during this period.
- Identify the causes of WW11 and carry out detailed studies of the Battle of Britain and the Blitz.



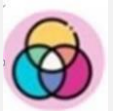
As geographers we will:

- Focus on the continent of North America.
- Develop our understanding of biomes by looking at the tundra in the northern parts of the continent and the tropical forests of the southern parts of the continent.
- Build on our map skills through the exploration of maps of North America



As artists and designers we will:

- Explore examples of Victorian architecture and the work of the Victorian pre-Raphaelite artists before practising different techniques of painting with water colours.
- Learn about and cook various dishes which make up a mezze.



In computing we will:

- Explore how variables can be designed and changed in games of our own design.



In Spanish we will:

- Focus on learning how to talk about our favourite colours, food, pets and hobbies.



In RE we will:

- Look at how faith is expressed in Sikh communities and what it is like to be a Sikh in Wolverhampton.



- Begin to use computer spreadsheets to present data.

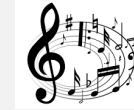
In PSHE we will:

- Discuss alcohol and drugs, learning how we can keep ourselves safe in the wider world.
- Identify our rights and responsibilities and what democracy looks like in Britain.



As musicians we will:

- Create our own compositions by focusing on melody, harmony, rhythm, and timbre.



- Learn about Sikh beliefs and ways of living.

In PE we will:

- Engage with a range of invasion games such as netball and football.
- Study resilience within exercise.



At Perry Hall:

As part of our Social, Moral, Spiritual and Cultural curriculum we will continue to interweave our school motto and core values into everything we do.

Motto:

Perry Hall Primary, a place to grow in confidence, creativity and ability.

At Perry Hall we are:

A Place to Grow –
Go for it!
Respect everyone
Overcome obstacles
Welcome all



Breakfast Club and Afterschool Club:



If you wish to book your child into breakfast or afterschool club or need to make contact with the staff, please use: phbreakfast-asc@perryhallmat.co.uk



Medical:

For any pupil medical related issues that you need to inform us about, please contact the appropriate staff using: phmedical@perryhallmat.co.uk



Homework:

School Uniform:

PE days & Uniform Reminder:

Year 6 homework	What is required?	Given out?	Due back in?	Where will I find this?	Do I need a login?
Reading	School reading book – sent home each Thursday and need to be returned when complete.	Thursday (if returned)	Once complete. A minimum of one complete reading book a week is expected. Your child will also have an opportunity to bring home a school library book.	Sent home with your child.	No.
Spelling	Your child will be bringing home their 'spelling log book' where they are recording the words they are finding tricky from their spelling sessions each week. This book will be coming home each day for the children to practise. It needs to be returned to school each day. Children will be tested on their spellings throughout the week informally.			In the 'tricky words' section of your child's reading record.	No
Maths	Online tasks are set weekly for your child to complete as well as additional activities they can choose from.	Tasks set on Fridays.	Teachers will check your child's completion of tasks each Friday.	www.emile-education.com	Yes
English					
Timetables Rockstars (daily/weekly)	Daily times table practise. Your child's class teacher will set a variety of challenges.	Friday	Teachers will track your child's progress, week to week.	www.trockstars.com	Yes

Children **must wear full, winter uniform** by October half term. Uniform plays a valuable role in contributing to our school ethos and helps to set an appropriate tone. We thank you in advance for supporting us in upholding our standards.

- Sweatshirt – Dark green
- Shirt / Blouse– White
- Jumper /Cardigan - Dark green
- Tie – Dark green with yellow stripe (with or without elastic)
- Trousers – Grey
- Pinafore / Skirt – Grey
- Socks – white/black/grey
- Shoes – flat / low heeled, closed toed, black

Uniform can be purchased from Kids Corner or Crested School Wear.

This term, your child's PE day is a **Wednesday**.

On each **Wednesday**, please send your child into school wearing their PE kit.

A reminder, PE kit entails:

- **plain** t-shirt in your team's colour
- **plain** black jogging bottoms/shorts
- **plain** black zip up/jumper
- trainers.

No logos or branded items of clothing as this does not uphold our uniform policy.

Please note:

No make-up, nail varnish, temporary tattoos or dyed unnatural hair colours.



IT'S GOOD TO BE GREEN!



We strive to adopt a fair approach to behaviour management within our school, offering a range of motivational rewards to help keep positive behaviour on track.

- *Each day, children start fresh on 'blank'.
- *If rules and core values are being adhered to, then the children will move up through the green triangle (rewards explained on the right).
- *If rules and core values are not being adhered to, then children will move down through the red triangle (consequences explained below).
- *Children can move up and down both the red and green triangle throughout the course of the day.
- *A purple card cannot be earned back.

IT'S GOOD TO BE GREEN

You can receive a 'Platinum Card' for going 'above and beyond' - you will receive a sticker on your bookmark, a certificate and a prize.



If you end your day on a 'Gold Card', you will receive a sticker on your bookmark.



When you have collected all of the stickers on the front of your bookmark, you will receive:

- a certificate
- a dip in the prize box.

When you have collected all of the stickers on the back of your bookmark, you will receive:

- an invite for your grown-ups to join us in a celebration assembly
- a certificate and a badge.



Places on the 'Wheel of Praise' are on offer at all times for showing a good attitude and lots of effort. At the end of each day, the 'Wheel of Praise' will be spun in each classroom and the winner will receive a dip in the prize box.



IF YOU ARE ALWAYS 'GREEN'
At the end of each term, if you have managed to stay 'green' for the whole of that term, you will receive a treat.

RED TRIANGLE

Warning Card

If you end your day on a 'Yellow Card', you will miss 5 minutes of your 'Good to be Green' time. (You will miss 5 minutes per yellow card received during the week).

If you end your day on a 'Red Card':

- 1) you will carry out 'reflection time' with a member of the leadership team at the end of the day
- 2) your parents/carers will be contacted
- 3) you will miss 10 minutes of your 'Good to be Green' time. (You will miss 10 minutes per red card received during the week).

Consequence Card

NON NEGOTIABLES

You will automatically receive a PURPLE CARD for:

- Deliberate physical contact
- Swearing
- Racism
- Stealing
- Refusal to complete work



If you receive a purple card:

- 1) you will carry out 'reflection time' with a member of the leadership team at the end of the day
- 2) your parents/carers will be contacted
- 3) you will miss all of your 'Good to be Green' time.

Other Year Group Specific Information:

Happy New Year, Year 6! Welcome back! We hope you are well rested and ready to kick start your last year with us!

We are going to continue to prepare for our upcoming statutory SATs assessments, beginning on 13th May 2024. Details of the week and what it will entail will follow shortly. In this important last term before the SATs, it is vital for children to engage in their learning as much as possible, therefore regular attendance in school is crucial as well as full completion of the weekly homework tasks set. Please ensure your child is reading regularly at home also. The children made fantastic progress across the Autumn Term and we know they are going to continue to do so with us this term – thank you very much for your support with this.

From the Year 6 Team – Mrs Middlebrook, Mrs Sanders, Mrs Holdcroft, Miss Stanyer, Mrs Lewis and Miss Withington.