

Year 2 Autumn Term 2023

This grid outlines the knowledge and skills that Year 2 children will gain throughout this term.
As explained at the 'Meet the Teacher' meeting, we will no longer be focussing on 'topics' but learning through individual subjects instead.

As readers we will:

Continue to develop our skills in language understanding and retrieval of information, we will also increase our focus on inference skills.

We will read an exciting range of books to inspire and motivate us as readers as well as gaining exposure to inspire us in our own writing.

Children will continue to follow the synthetic phonics programme **RWI (read Writ Inc)** which will support children in reading words speedily according to the sounds they know. This will also support children in their spelling and writing skills.

As mathematicians we will:

Consolidate and extend our understanding of numbers and place value of their digits up to 100. We will be using all four operations (+, -, X, ÷) to calculate and solve reasoning tasks and problems. Number and a developing of number sense will be a focus this term and this will be supported by the delivery of Number Mastery daily for 15 minutes.



As writers we will:

Be writing a portal narrative inspired by the Talk for Writing text 'Jack and the Beanstalk.'

This year we are starting an exciting new programme called Talk for Writing, which is a whole school approach to develop our children as readers, writers, speakers and listeners.

As scientists we will:

Investigate living things including the human body where we will develop our understanding of how we use our skeleton, muscles, blood and digestive system to grow and survive.



As historians we will:

Be looking at the Romans in Britain and how they affected the lives of British people at the time.

We will learn about their armies and what happened after the fall of the Roman Empire.

As geographers we will:

Understand how to use a range of maps.

Recognise map symbols and understand the basic four points of the compass.

Know that maps show small and large areas.



As artists we will:

Investigate colour and shape and experiment with mixing colours to make new colours.

We will also look at some art by Picasso and sculptures of Calder.

In computing we will:

Explore how the internet works and how to use it safely.

Explore how we can use the internet to communicate and collaborate safely.

Understand what technology is.



As designers we will:

Create moving pictures using leavers and sliders.

In RE we will:

Identify the different religions found in the local area and their key beliefs.

Explore the importance of places of worship.



In PSHE we will:

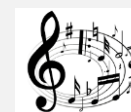
Identify different types of healthy relationships.

Learn that everybody is different and how to respect this.



As musicians we will:

Combine the use of our voices, instruments and digital technology in our compositions.



In PE we will:

Working on our gymnastic skills

Exploring different ways to travel whilst creating patterns and sequences.

Taking part in individual and team performances.

At Perry Hall:

As part of our Social, Moral, Spiritual and Cultural curriculum we will continue to interweave our school motto and core values into everything we do.

Motto:

Perry Hall Primary, a place to grow in confidence, creativity and ability.

At Perry Hall we are:

A Place to Grow –

Go for it!

Respect everyone

Overcome obstacles

Welcome all



Breakfast Club and Afterschool Club:



If you wish to book your child into breakfast or afterschool club or need to make contact with the staff, please use:

phbreakfast-asc@perryhallmat.co.uk



Medical:

For any pupil medical related issues that you need to inform us about, please contact the appropriate staff using:

phmedical@perryhallmat.co.uk



Homework:

Year 2 homework	What is required?	Given out?	Due back in?	Where will I find this?	Do I need a login?
Reading	School reading book – sent home each Thursday and need to be returned each day.	Thursday	Please send your child in with their reading book each day so they are able to read with an adult in school too. Your child will also have an opportunity to bring home a school library book.	Sent home with your child.	No.
RWI – for children in RWI phonics sessions	Spelling book	Monday	Friday	Spelling book sent home with your child	No
Spelling – for children in RWI spelling sessions	Your child will be bringing home their 'spelling log book' where they are recording the words they are finding tricky from their spelling sessions each week. This book will be coming home each day for the children to practise. It needs to be returned to school each day. Children will be tested on their spellings throughout the week informally.			Spelling log book sent home with your child.	No
Maths	Online tasks will be set weekly for your child to complete as well as additional activities they can choose from. More details to follow soon.				Yes – to be confirmed shortly.
English	Online tasks will be set weekly for your child to complete as well as additional activities they can choose from. More details to follow soon.				Yes – to be confirmed shortly.

School Uniform:

Children **must wear full, winter uniform** by October half term. Uniform plays a valuable role in contributing to our school ethos and helps to set an appropriate tone. We thank you in advance for supporting us in upholding our standards.

- Sweatshirt – Dark green
- Shirt / Blouse – White
- Jumper / Cardigan – Dark green
- Tie – Dark green with yellow stripe (with or without elastic)
- Trousers – Grey
- Pinafore / Skirt – Grey
- Socks – white/black/grey
- Shoes – flat / low heeled, closed toed, black

Uniform can be purchased from Kids Corner or Crested School Wear.

PE days & Uniform Reminder:

This term, your child's PE day is a **Monday**.

On each **Monday**, please send your child into school wearing their PE kit.

A reminder, PE kit entails:

- plain t-shirt in your team's colour
- plain black jogging bottoms/shorts
- plain black zip up/jumper
- trainers.

No logos or branded items of clothing as this does not uphold our uniform policy.

Please note:

No make-up, nail varnish, temporary tattoos or dyed unnatural hair colours.



IT'S GOOD TO BE GREEN!



We strive to adopt a fair approach to behaviour management within our school, offering a range of motivational rewards to help keep positive behaviour on track.

- *Each day, children start fresh on 'blank'.
- *If rules and core values are being adhered to, then the children will move up through the green triangle (rewards explained on the right).
- *If rules and core values are not being adhered to, then children will move down through the red triangle (consequences explained below).
- *Children can move up and down both the red and green triangle throughout the course of the day.
- *A purple card cannot be earned back.



IT'S GOOD TO BE GREEN

You can receive a 'Platinum Card' for going 'above and beyond' - you will receive a sticker on your bookmark, a certificate and a prize.

If you end your day on a 'Gold Card', you will receive a sticker on your bookmark.

When you have collected all of the stickers on the front of your bookmark, you will receive:

- a certificate
- a dip in the prize box.

When you have collected all of the stickers on the back of your bookmark, you will receive:

- an invite for your grown-ups to join us in a celebration assembly
- a certificate and a badge.

Places on the 'Wheel of Praise' are on offer at all times for showing a good attitude and lots of effort. At the end of each day, the 'Wheel of Praise' will be spun in each classroom and the winner will receive a dip in the prize box.

Consistently Good Behaviour

IF YOU ARE ALWAYS 'GREEN'

At the end of each term, if you have managed to stay 'green' for the whole of that term, you will receive a treat.

RED TRIANGLE

Warning Card

If you end your day on a 'Yellow Card', you will miss 5 minutes of your 'Good to be Green' time. (You will miss 5 minutes per yellow card received during the week).

If you end your day on a 'Red Card':

- 1) you will carry out 'reflection time' with a member of the leadership team at the end of the day
- 2) your parents/carers will be contacted
- 3) you will miss 10 minutes of your 'Good to be Green' time. (You will miss 10 minutes per red card received during the week).

Consequence Card

NON NEGOTIABLES

You will automatically receive a PURPLE CARD for:

- Deliberate physical contact
- Swearing
- Racism
- Stealing
- Refusal to complete work



If you receive a purple card:

- 1) you will carry out 'reflection time' with a member of the leadership team at the end of the day
- 2) your parents/carers will be contacted
- 3) you will miss all of your 'Good to be Green' time.

Other Year Group Specific Information:

Welcome to Year 2!

We have a really exciting year planned and we are looking forward to getting to know the children.

As always if there are any problems or concerns, please come and speak to us.

Below are a few pieces of information to be aware of for the year ahead, and we will be more than happy to help.

- Phonics Check- Those children that are working below the expected standard in phonics will complete a phonics check during the Summer term.
- RWI The Read Write Inc phonics programme will continue to be implemented across year 2 during the Autumn Term.
- Year 2 Residential.
- Reminder: Monday is Year 2 PE day.

Please let us know if there is anything you wish to discuss further.

Here's to a fantastic year in Year 2!

From the Year 2 team.