

## Year 2– Spring Term – Commotion in the Ocean

*This grid outlines the knowledge and skills that Year 2 children will gain throughout this term's topic.*

### As readers we will:

- Be continuing to underpin our phonics knowledge and develop what we already know. This will flow into our reading books which will come home on a weekly basis. Furthermore, for some children this will transition into guided reading



### As mathematicians we will:

- Be investigating place value and its relationships with the wider areas of maths. We will then move onto introducing multiplication, division and fractions. We will continue to work in line with our school calculation policy and follow our concrete, pictorial and abstract method.



### As writers we will:

- Be continuing to work on our demarcation skills. We will be adding in year 2 skills to our writing based around Under the sea. We will focus on The Lighthouse Keepers Lunch, Rainbow Fish and other books involving the sea or the ocean, and write our own version of a story, including a setting description and character description.



### As scientists we will:

- Learning about living things and their habitats. Investigating how some animals have adapted to their surroundings. We will also be learning about plants, investigating what plants need to grow and thrive and learning about different parts of a plant.



### As historians we will:

- Learn about Grace Darling and why she is a significant person from the past.
- We will also find out about seaside towns during Victorian times



### As geographers we will:

- We will be learning about the growth and development of seaside towns and investigating the environmental issues that have developed in recent years.



### As artists we will:

- Study the work of the artist Katsushika and his painting of the great wave. We will investigate the techniques used and practice using these ourselves to create our own art.



### In computing we will:

- Continue to develop our knowledge of algorithms building on our learning from Year 1. We will practice making our own algorithms and develop an understanding of how to fix bugs.



### As designers we will:

- Design, make and evaluate a sea puppet. We will practice sewing skills and look at other ways to join pieces of material.



### In RE we will:

- Be investigating special books within Christianity and Islam. We will be looking at the Qur'an and the meanings of the parable stories within it. We will then move onto looking at the bible. We will again look at the meaning of the stories and the lessons they teach us.



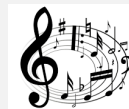
### In PSHE we will:

- Learn about how to keep ourselves safe and how to deal with uncomfortable situations. We will also begin to understand how we respect others and deal with uncomfortable feelings.



### As musicians we will:

- Investigate how the experience of music has changed over the last 50 years. Children look into changes in musical tastes, explore different styles of music, and look at how people experience music both inside and outside the home.



### In PE we will:

- Be learning about invasion games. This will include skills such as overarm throwing, catching, tracking an opponent, and making interceptions, and dodging an opponent.



### At Perry Hall:

As part of our Social, Moral, Spiritual and Cultural curriculum we will continue to interweave our school motto and core values into everything we do.

#### Motto:

**Perry Hall Primary, a place to grow in confidence, creativity and ability.**

#### At Perry Hall we are:

**Respectful, Caring, Determined – never give up, Enthusiastic, Independent and Motivated.**



### Breakfast Club and Afterschool Club:

If you wish to book your child into breakfast or afterschool club or need to make contact with the staff, please use: [phbreakfast-asc@perryhallmat.co.uk](mailto:phbreakfast-asc@perryhallmat.co.uk)



### Medical:

For any pupil medical related issues that you need to inform us about, please contact the appropriate staff using:  
[phmedical@perryhallmat.co.uk](mailto:phmedical@perryhallmat.co.uk)



# Homework:

Year 2 homework	What is required?	Given out?	Due back in?	Where will I find it	Do I need a login?
School reading book (weekly)	Reading books will be sent home each Wednesday and will need to be returned into school the following Monday	Wednesday	Mon/Tue	Sent home with your child in their book bag	No
Mathematics (weekly)	A weekly Maths task will be given to your child for them to complete	Friday	Tue	Sent home inside blue homework book	No
Topic Grid (termly)	A range of engaging tasks related to your child's termly topic and covering all curriculum areas will be set each term. Children are to work through these tasks and send evidence of their completed outcomes to their year group email address.	At the start of the term	Throughout the term as and when completed	Sent home with your child inside blue homework book	No

# School Uniform:

Children **must wear full, winter uniform** by October half term. Uniform plays a valuable role in contributing to our school ethos and helps to set an appropriate tone. We thank you in advance for supporting us in upholding our standards.

**Girls:**

- **white polo shirt/blouse (optional school tie) and grey skirt / pinafore / trousers with a green cardigan (school logo available)**
- **plain black, low heeled shoes.**

**Boys:**

- **grey trousers and white shirt with a school tie/polo shirt with a green jumper**
- **plain black school shoes (no trainers/pumps).**

*Uniform can be purchased from Kids Corner.*

# PE days & Uniform Reminder:

This term, your child's PE day is a Thursday.

On each Thursday, please send your child into school wearing their PE kit.

A reminder, PE kit entails:

- plain t-shirt in your teams colour
- plain black jogging bottoms/shorts
- plain black zip up/jumper
- trainers.

**No logos or branded items of clothing as this does not uphold our uniform policy.**

**Remember:** correct dress for PE means more points for your team!

**Please note:**

No make-up, nail varnish, temporary tattoos or dyed unnatural hair colours.

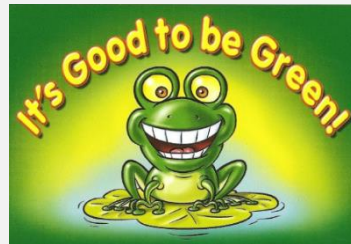


**IT'S GOOD TO BE GREEN!**



We strive to adopt a fair approach to behaviour management within our school, offering a range of motivational rewards to help keep positive behaviour on track.

- \*Each day, children start fresh on 'blank'.
- \*If rules and core values are being adhered to, then the children will move up through the



green triangle

(rewards explained on the right).

- \*If rules and core values are not being adhered to, then children will move down through the red triangle (consequences explained below).

\*Children can move up and down both the red and green triangle throughout the course of the day.

\*A purple card cannot be earned back

## IT'S GOOD TO BE GREEN

You can receive a 'Platinum Card' for going 'above and beyond' - you will receive a sticker on your bookmark, a certificate and a prize.

If you end your day on a 'Gold Card', you will receive a sticker on your bookmark.

When you have collected all of the stickers on the front of your bookmark, you will receive:

- a certificate
- a dip in the prize box.

When you have collected all of the stickers on the back of your bookmark, you will receive:

- an invite for your grown-ups to join us in a celebration assembly (when assemblies are restarted)
- a certificate and a badge.



Places on the 'Wheel of Praise' are on offer at all times for showing a good attitude and lots of effort. At the end of each day, the 'Wheel of Praise' will be spun in each classroom and the winner will receive a dip in the prize box.



**IF YOU ARE ALWAYS 'GREEN'**  
At the end of each half term, if you have managed to stay 'green' for that half term, you will receive a 'treat activity'.

## RED TRIANGLE

### Warning Card

If you end your day on a 'Yellow Card', you will miss 5 minutes of your 'Good to be Green' time. (You will miss 5 minutes per yellow card received during the week).

If you end your day on a 'Red Card':

- 1) you will carry out 'reflection time' with a member of the leadership team at the end of the day
- 2) your parents/carers will be contacted
- 3) you will miss 10 minutes of your 'Good to be Green' time. (You will miss 10 minutes per red card received during the week).

### Consequence Card

## NON NEGOTIABLES

You will automatically receive a PURPLE CARD for:

- Deliberate physical contact
- Swearing
- Racism
- Stealing
- Refusal to complete work



If you receive a purple card:

- 1) you will carry out 'reflection time' with a member of the leadership team at the end of the day
- 2) your parents/carers will be contacted
- 3) you will miss all of your 'Good to be Green' time.

## Other Year Group Specific Information:

We are really looking forward to the exciting adventures that await our Year 2 pupils this term! After such a fantastic start to the academic year in Autumn, we are sure that the children are ready and able to take on the new challenges and exciting learning opportunities in the Spring term. In February, some of our pupils will be attending the residential at Kingswood. We also have an exciting project planned for the pupils who are remaining in school.

This term we will continue to build on our progress in the Autumn term. Phonics and guided reading will continue. Children taking part in phonics sessions will continue to receive weekly spellings homework. Those who are now working on guided reading sessions will continue to take part in the school spelling scheme and will not receive weekly spellings. Spellings for the guided reading group will be selected by each individual child based on the unit they are working through. There will also be maths homework each Friday to be returned with reading books by the Tuesday of the following week.