

Year 3 – Summer Term – Ancient Egypt

This grid outlines the knowledge and skills that Year 3 children will gain throughout this term's topic.

As readers we will:

Be exploring a range of fiction and non-fiction texts and using our KS2 reading domains. We will focus on a range of question domains and will also introduce a weekly mixed domain lesson for pupils to become more confident at approaching different question styles independently.



As mathematicians we will:

Be developing our knowledge of division and multiplication within our 3, 4 and 8s. We will continue our addition and subtraction calculations using mental and written strategies. We will also learn about money by recognising coins and notes. We will continue to learn more about telling the time.



As writers we will:

Be embedding our knowledge on story writing. We will be writing about our new book the Egyptian Cinderella. In this book we focus on key skills we have learnt in Year 3. These skills will include co-ordinating and subordinating conjunctions, expanded noun phrases with post modifiers and mixed sentence lengths.



As scientists we will:

Develop our knowledge around light and shadows. We are going to carry out investigations about how a shadow is formed. During this investigation, we will be able to recognise the change in the size of shadows. We will also be able to describe what dark is (absence of light) and know we need light to be able to see things.



As historians we will:

- Consider different ways history can be understood by looking at artefacts and historical periods from different perspectives.
- Research into how Egyptian life differed to our own.



As geographers we will:

- Develop our map reading skills by looking at a range of different types of map.
- Use grid references to read maps and locate key information and places.



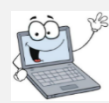
As artists and designers we will:

- Learn about the Egyptian scarab beetle.
- Use different artistic methods, techniques and resources creatively. This includes different resources and equipment to make a 3D model.



In computing we will:

- Practice using different software to display data and information in a variety of ways.
- Develop our confidence with computer coding.



In Spanish we will:

- Learn about weather and months of the year.
- Express ourselves artistically with Spanish colours!



In RE we will:

- Find out about the importance of religious leaders.
- We are going to be learning all about Sikhism and religious leaders Sikh Granthi.



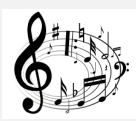
In PSHE we will:

- Learn about the importance of trying our best,
- Develop our skills and embrace our different talents, and be able to recognise that everyone is different.



As musicians we will:

- Listen to a range of Ancient Egyptian music and learn the lyrics of songs.
- Perform these in class by recognising the tempo of each song.



In PE we will:

- Learn about different footballing techniques and rules.
- Understand the importance of teamwork and sportsmanship.



At Perry Hall:

As part of our Social, Moral, Spiritual and Cultural curriculum we will continue to interweave our school motto and core values into everything we do.

Motto:

Perry Hall Primary, a place to grow in confidence, creativity and ability.

At Perry Hall we are:

Respectful, Caring, Determined – never give up, Enthusiastic, Independent and Motivated.



Breakfast Club and Afterschool Club:

If you wish to book your child into breakfast or afterschool club or need to make contact with the staff, please use: phbreakfast-asc@perryhallmat.co.uk



Medical:

For any pupil medical related issues that you need to inform us about, please contact the appropriate staff using: phmedical@perryhallmat.co.uk



Homework:

Year 3 Homework	What is required?	Given out?	Due back in?	Where will I find this?	Do I need a login?
Reading: School reading book (weekly)	Reading books will be sent home each Wednesday and will need to be returned into school the following Monday .	Wednesday	Monday	Sent home with your child.	No.
Spelling	Your child will be bringing home a 'spelling <u>log book</u> ' where they are recording the words they are finding tricky in their spelling set that week. This book will be coming home each day for the children to practise. It needs to be returned to school each day. Children will be tested on their spellings throughout the week.			<u>Spellings</u> book sent home with your child.	No
Mathematics (weekly)	A weekly maths task will be given to your child for them to complete.	Friday	Tuesday	Homework folder	No
Timetable Rockstars (daily/weekly)	Daily/weekly times tables practice. Your child's class teacher will set a variety of challenges.	Friday	Tuesday	https://play.trockstars.com/auth/school/student/30021	Yes, see your child's reading record
Topic Grid (termly)	A range of engaging tasks related to your child's termly topic and covering all curriculum areas, will be set each term. Children are to work through these tasks and send evidence of their complete outcomes to their year group email address.	Towards the start of the term	Throughout the term	Homework folder	No

School Uniform:

Children **must wear full, summer uniform**. Uniform plays a valuable role in contributing to our school ethos and helps to set an appropriate tone. We thank you in advance for supporting us in upholding our standards.

Girls:

- green and white checked summer dress with a green cardigan or
- white polo shirt/blouse and grey skirt / pinafore / trousers with a green cardigan
- plain black, low heeled shoes (no open toe sandals).

Boys:

- grey trousers/shorts and white polo shirt with a green jumper
- plain black school shoes (no trainers/pumps).

Uniform can be purchased from Kids Corner.

PE days & Uniform Reminder:

This term, your child's PE day is a **Monday**.

On each **Monday**, please send your child into school wearing their PE kit.

A reminder, PE kit entails:

- plain white t-shirt
- plain black jogging bottoms/shorts
- plain black zip up/jumper
- trainers.

Year Group Email Address:

Reminder, your child's year group email address is: ph.y3homelearning@perryhallmat.co.uk

Please use this, if you need to make contact with your child's year group staff.



Good to be Green



We strive to adopt a fair approach to behaviour management within our school, offering a range of motivational rewards to help keep positive behaviour on track.



- *Each day, children start fresh on 'blank'.
- *If rules and core values are being adhered to, then the children will move up through the green triangle (rewards explained on the right).
- *If rules and core values are not being adhered to, then children will move down through the red triangle (consequences explained below).
- *Children can move up and down both the red and green triangle throughout the course of the day.
- *A purple card cannot be earned back.

IT'S GOOD TO BE GREEN

You can receive a 'Platinum Card' for going 'above and beyond' - you will receive a sticker on your bookmark, a certificate and a prize.

If you end your day on a 'Gold Card', you will receive a sticker on your bookmark.

When you have collected all of the stickers on the front of your bookmark, you will receive:

- a certificate
- a dip in the prize box.

When you have collected all of the stickers on the back of your bookmark, you will receive:

- an invite for your grown-ups to join us in a celebration assembly (when assemblies are restarted)
- a certificate and a badge.

Places on the 'Wheel of Praise' are on offer at all times for showing a good attitude and lots of effort. At the end of each day, the 'Wheel of Praise' will be spun in each classroom and the winner will receive a dip in the prize box.

Consistently Good Behaviour

IF YOU ARE ALWAYS 'GREEN'
At the end of each half term, if you have managed to stay 'green' for that half term, you will receive a 'treat activity'.

RED TRIANGLE

Warning Card

If you end your day on a 'Yellow Card', you will miss 5 minutes of your 'Good to be Green' time. (You will miss 5 minutes per yellow card received during the week).

If you end your day on a 'Red Card':

- 1) you will carry out 'reflection time' with a member of the leadership team at the end of the day
- 2) your parents/carers will be contacted
- 3) you will miss 10 minutes of your 'Good to be Green' time. (You will miss 10 minutes per red card received during the week).

Consequence Card

NON NEGOTIABLES

You will automatically receive a PURPLE CARD for:

- Deliberate physical contact
- Swearing
- Racism
- Stealing
- Refusal to complete work



If you receive a purple card:

- 1) you will carry out 'reflection time' with a member of the leadership team at the end of the day
- 2) your parents/carers will be contacted
- 3) you will miss all of your 'Good to be Green' time.

Other Year Group Specific Information:

Welcome to the Summer Term!

As we enter the final term of Year 3, as a team we could not be happier at the progress the children in Year 3 have made and we can't wait to build upon this across the Summer Term.

This term, we will be learning lots about Ancient Egypt and this will be the focus of many of our lessons. Beyond this, the Year 4 Multiplication Tables Check will still remain a focus so practicing at home as well as in school will be very important in readiness for next year.

As the weather (hopefully) continues to improve, please make sure to wear comfortable clothing which is in line with our summer uniform guidelines.

If you or your child have any questions at any point, please do speak to a member of the team and we will be more than happy to help.

Here's to a fantastic final term of Year 3!

Mr Gardner, Miss Salter and Miss Gaunt

