

## Year 2 – Summer Term 2022 – Up, up and away!

*This grid outlines the knowledge and skills that Year 2 children will gain throughout this term's topic.*

### As readers we will:

- continue to recap our comprehension skills based around retrieval, inference, language, summary and prediction. This will be based around a poem about a hot air balloon and a non-fiction text based around Amelia Earhart.



### As mathematicians we will:

- recap our knowledge of the four operations. We will look at addition and subtraction, as well as multiplication and division, whilst solving a range of different problems.



### As writers we will:

- be continuing our work based around narrative. We will be working from the Roald Dahl book 'The Giraffe and the Pelly and Me'. We will complete a retell of the story then write our own variation of this story.



### As scientists we will:

- be investigating electricity. We will look at circuits, make circuits, draw circuits using the correct symbols and consider electrical safety.



### As historians we will:

- be investigating the progress of flight from its conceptions by the Wright Brothers to its current form in modern day. We will make timelines to show this progress.



### As geographers we will:

- be investigating compasses and maps, looking at how this influenced flight and planning a flight path using compass directions.



### As designers we will:

- look at the construction of different machines, how they were designed to fly effectively and then make our own flying machines from these evaluations.



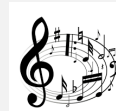
### As artists we will:

- continue to build upon our range of art and design techniques, looking at using clay and the bas relief technique to create our own rocket ship.



### As musicians we will:

- focus on that national anthem and will be choosing and learning a song to celebrate the Queen's Jubilee.



### In PE we will:

- learn fundamental movement skills. This includes traveling in different directions safely, jumping, dodging and evasion.



## In computing we will:

- be investigating coding within scratch, including directing a sprite, and debugging any issues within strands of coding. We will then move onto photography.



## In PSHE we will:

- be looking at different types of medicines, giving positive feedback and knowing how to keep themselves safe in a range of scenarios.



## In RE we will:

- be learning about Islam. We will learn about places that are special to a Muslim, including places of worship. We will then investigate stories of the life of a Prophet.



## At Perry Hall:

As part of our Social, Moral, Spiritual and Cultural curriculum we will continue to interweave our school motto and core values into everything we do.

### Motto:

**Perry Hall Primary, a place to grow in confidence, creativity and ability.**

### At Perry Hall we are:

**Respectful, Caring, Determined – never give up, Enthusiastic, Independent and Motivated.**



## Breakfast Club and Afterschool Club:

If you wish to book your child into breakfast or afterschool club or need to make contact with the staff, please use: [phbreakfast-asc@perryhallmat.co.uk](mailto:phbreakfast-asc@perryhallmat.co.uk)



## Medical:

For any pupil medical related issues that you need to inform us about, please contact the appropriate staff using: [phmedical@perryhallmat.co.uk](mailto:phmedical@perryhallmat.co.uk)



## School Uniform:

Children **must wear full, summer uniform** after Easter. Uniform plays a valuable role in contributing to our school ethos and helps to set an appropriate tone. We thank you in advance for supporting us in upholding our standards.

### Girls:

- **Green and white checked summer dress with a green cardigan or white polo shirt/blouse and grey skirt/pinafore or trousers with a green cardigan**
- **plain black, low heeled shoes (no open sandals).**

### Boys:

- **grey trousers or shorts and white shirt with a school tie/polo shirt with a green jumper**
- **plain black school shoes (no trainers/pumps).**

*Uniform can be purchased from Kids Corner.*

## PE days & information:

This term, your child's PE day is a **Tuesday**.

On each **Tuesday**, please send your child into school wearing their PE kit.

A reminder, PE kit entails:

- plain white t-shirt
- plain black jogging bottoms/shorts
- plain black zip up/jumper
- trainers

*(No logos or slogans please).*

## Year Group Email Address:

Reminder, your child's year group email address is:

***ph.y2homelearning@perryhallmat.co.uk***

Please use this, if you need to make contact with your child's year group staff.



## Homework:

Year 2 Homework	What is required?	Given out?	Due back in?	Where will I find this?	Do I need a login?
Reading: School reading book (weekly)	Reading books will be sent home each <b>Wednesday</b> and will need to be returned into school the following <b>Monday</b> .	Wednesday	Monday	Sent home with your child.	No.
Spelling (weekly)	A weekly spelling task will be assigned to your child for them to complete. (Spellings will be taken from the words focused on in your child's spelling group).	New spellings issued: Friday	Spellings tested the following Friday	Spellings book sent home with your child.	No
Mathematics (weekly)	A weekly maths task will be given to your child for them to complete.	Friday	Tuesday	Homework folder	No
RWI (weekly)	A weekly link will be sent home for the video of the sounds your child is learning in school. A link will also be sent for their RWI e-book if relevant.	Friday	Thursday	Text	No
Timetable Rockstars (daily/weekly)	Daily/weekly times tables practice. Your child's class teacher will set a variety of challenges.	Friday	Tuesday	<a href="https://play.trockstars.com/auth/school/student/30021">https://play.trockstars.com/auth/school/student/30021</a>	Yes, see your child's reading record
Topic Grid (termly)	A range of engaging tasks related to your child's termly topic and covering all curriculum areas, will be set each term. Children are to work through these tasks and send evidence of their complete outcomes to their year group email address.	Towards the start of the term	Throughout the term	Homework folder	No

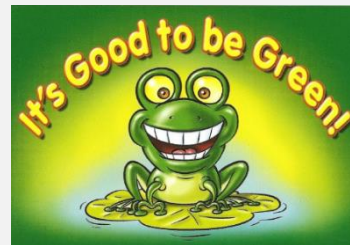
## Good to be Green Reminder:



**IT'S GOOD TO BE GREEN!**



We strive to adopt a fair approach to behaviour management within our school, offering a range of motivational rewards to help keep positive behaviour on track.



- \*Each day, children start fresh on 'blank'.
- \*If rules and core values are being adhered to, then the children will move up through the green triangle (rewards explained on the right).
- \*If rules and core values are not being adhered to, then children will move down through the red triangle (consequences explained below).
- \*Children can move up and down both the red and green triangle throughout the course of the day.
- \*A purple card cannot be earned back.

## IT'S GOOD TO BE GREEN

You can receive a 'Platinum Card' for going 'above and beyond' - you will receive a sticker on your bookmark, a certificate and a prize.



If you end your day on a 'Gold Card', you will receive a sticker on your bookmark.

When you have collected all of the stickers on the front of your bookmark, you will receive:

- a certificate
- a dip in the prize box.

When you have collected all of the stickers on the back of your bookmark, you will receive:

- an invite for your grown-ups to join us in a celebration assembly (when assemblies are restarted)
- a certificate and a badge.



Places on the 'Wheel of Praise' are on offer at all times for showing a good attitude and lots of effort. At the end of each day, the 'Wheel of Praise' will be spun in each classroom and the winner will receive a dip in the prize box.



Consistently Good Behaviour



**IF YOU ARE ALWAYS 'GREEN'**  
At the end of each half term, if you have managed to stay 'green' for that half term, you will receive a 'treat activity'.

## RED TRIANGLE

### Warning Card

If you end your day on a 'Yellow Card', you will miss 5 minutes of your 'Good to be Green' time. (You will miss 5 minutes per yellow card received during the week).

If you end your day on a 'Red Card':

- 1) you will carry out 'reflection time' with a member of the leadership team at the end of the day
- 2) your parents/carers will be contacted
- 3) you will miss 10 minutes of your 'Good to be Green' time. (You will miss 10 minutes per red card received during the week).

### Consequence Card

## NON NEGOTIABLES

You will automatically receive a PURPLE CARD for:

- Deliberate physical contact (including retaliation)
- Swearing
- Racism
- Stealing
- Refusal to complete work



If you receive a purple card:

- 1) you will carry out 'reflection time' with a member of the leadership team at the end of the day
- 2) your parents/carers will be contacted
- 3) you will miss all of your 'Good to be Green' time.

## Other Year Group Specific Information:

We are very much looking forward to seeing everyone after the Easter break and hope that everyone is well rested and ready to 'take flight' on our Summer Term adventures. The Summer Term is packed full of exciting times leading to the SATs and working on writing narrative pieces. There are many exciting activities planned and we are very much looking forward to sharing it with you all.

Important dates:

- SATs w/b 16/05/22
- Kingswood 6-7/06/22