

Year 1 – Summer Term 2022 – Castles

This grid outlines the knowledge and skills that Year 1 children will gain throughout this term's topic.

As readers we will:

- Continue to develop our phonic knowledge and our ability to speedily recognise all set 1, set 2 and set 3 sounds.
- Read accurately by blending sounds, improving our reading fluency by blending the sounds in our head (fred in your head).
- Listen to and discuss a wide range of texts including fiction, non-fiction and poetry as part of our lessons and during reading for pleasure time at the end of each school day.
- Make predictions and inferences.
- Be able to retrieve information from a text.
- Use expression and intonation when reading aloud.



As mathematicians we will:

- Describe position, directions and movements, including whole, half, quarter and three-quarter turns (using language such as left and right, forwards and backwards)
- Solve missing number problems such as $7 = \square - 9$
- Compare, describe and solve practical problems for capacity/volume *e.g. full, empty, half full, quarter full, more/less than*
- Measure and begin to record capacity and volume (ml/l)
- Use number bonds and related subtraction facts within 20
e.g. $9 + 7 = 16$; $16 - 7 = 9$; $7 = 16 - 9$
- Solve simple one-step problems involving multiplication and division



As writers we will:

- Compose sentences orally to ensure they make sense.
- Make sure we use capital letters, finger spaces and full stops correctly and consistently.
- Join sentences using connectives including and, because, but and so.
- Use adverbs of time in our writing.
- Use a range of interesting sentence openers in our writing.
- Write narratives (story retells or alternative endings to familiar stories) using a range of story language.
- Be able to retell a story with a clear beginning, middle and end.
- Use noun phrases *e.g. huge dog* and expanded noun phrases *e.g. huge, brown dog*.



As scientists we will:

- Learn about 'light and dark' including the movement of the sun, day length, shadows and different light sources.
- Explore how 'sounds' are made and the different sources of sound.
- Explore seasonal changes in summer.
- Ask simple scientific questions.
- Use simple equipment to make scientific observations.
- Suggest what have found out using our observations.



As historians we will:

- Learn about castles including what they were like and who lived in them
- Learn about the different features of castles
- Compare aspects of life in different periods
- Sequence events in chronological order.
- Describe similarities and differences.
- Identify different ways to represent the past.
- Learn about the significant lives of people from the past.
- Use a range of sources to find out characteristic features of the past.



As geographers we will:

- Explore our school locality using maps and aerial photographs
- Devise our own simple map of our school grounds including basic symbols in a key
- Use simple fieldwork and observational skills to study the geography of our school and its grounds including human and physical features.



As designers we will:

- Look at moving pictures including working with levers, slides and
- Plan and design a product by modelling and communicating our ideas.
- Select and use the correct tools to perform practical tasks.
- Explore and evaluate a range of existing products including our own designs.



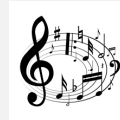
As artists we will:

- Consider the work of artist Paul Klee including 'a castle at night'
- Develop a wide range of art and design techniques using colour, pattern and shape
- Use drawing, painting and sculpture to develop and share ideas
- Use different mediums to create a representation of Paul Klee's work.



As musicians we will:

- Listen to and appraise a piece of music
- Begin to recognise the features of pop music
- Explore different styles of music.



In PE we will:

- To take part in collaborative team games
- To develop our hand-eye coordination including racket and ball skills
- Take part in Sports Day and refine our running, jumping and throwing skills.



In computing we will:

- Learning 'What is technology?'
- Developing mouse skills
- Using a computer keyboard
- Developing keyboard skills
- Using a computer responsibly.



In PSHE we will:

- Learn about how and why some books are holy.
- Learn some special stories of Christians, Sikhs and Muslims.



In RE we will:

- Learn about the importance of eating 5 a day
- Learn about how to make a healthy lunch, including the Eatwell guide
- Understand how diseases can spread and how to prevent it (importance of hand hygiene)
- Learn simple conflict resolution strategies
- Recognise how a person's behaviour (including our own) can affect other people.



At Perry Hall:

As part of our Social, Moral, Spiritual and Cultural curriculum we will continue to interweave our school motto and core values into everything we do.

Motto:

Perry Hall Primary, a place to grow in confidence, creativity and ability.

At Perry Hall we are:

Respectful, Caring, Determined – never give up, Enthusiastic, Independent and Motivated.



Breakfast Club and Afterschool Club:

If you wish to book your child into breakfast or afterschool club or need to make contact with the staff, please use: phbreakfast-asc@perryhallmat.co.uk



Medical:

For any pupil medical related issues that you need to inform us about, please contact the appropriate staff using: phmedical@perryhallmat.co.uk



School Uniform:

Children **must wear full, summer uniform** after Easter. Uniform plays a valuable role in contributing to our school ethos and helps to set an appropriate tone. We thank you in advance for supporting us in upholding our standards.

Girls:

- **Green and white checked summer dress with a green cardigan or white polo shirt/blouse and grey skirt/pinafore or trousers with a green cardigan**
- **plain black, low heeled shoes (no open sandals).**

Boys:

- **grey trousers or shorts and white shirt with a school tie/polo shirt with a green jumper**
- **plain black school shoes (no trainers/pumps).**

Uniform can be purchased from Kids Corner.

PE days & information:

This term, your child's PE day is a **Wednesday**.

On each **Wednesday**, please send your child into school wearing their PE kit.

A reminder, PE kit entails:

- plain white t-shirt
- plain black jogging bottoms/shorts
- plain black zip up/jumper
- trainers

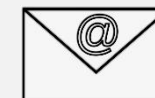
(No logos or slogans please).

Year Group Email Address:

Reminder, your child's year group email address is:

ph.y1homelearning@perryhallmat.co.uk

Please use this, if you need to make contact with your child's year group staff.



Homework:

Year 1 homework	What is required?	Given out?	Due back in?	Where will I find it	Do I need a login?
Reading School reading book (weekly)	Reading books will be sent home each Wednesday and will need to be returned into school the following Monday	Wednesday	Mon/Tue	Sent home with your child	No
Spellings (weekly)	A weekly spelling activity sheet will be sent home each Friday. Spellings will be matched to your child's phonics group.	Friday	Spellings tested the following Friday	Sent home with your child inside blue homework book	No
Mathematics (weekly)	A weekly Maths task will be given to your child for them to complete	Friday	Tue	Sent home inside blue homework book	No
RWI (weekly)	A new e-book will be assigned to your child on Oxford Owl each Friday	Friday	NA	Oxford Owl	Yes
Topic Grid (termly)	A range of engaging tasks related to your child's termly topic and covering all curriculum areas will be set each term. Children are to work through these tasks and send evidence of their completed outcomes to their year group email address.	At the start of the term	Throughout the term as and when completed	Sent home with your child inside blue homework book	No

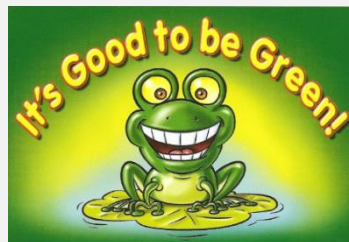
Good to be Green Reminder:



IT'S GOOD TO BE GREEN!



We strive to adopt a fair approach to behaviour management within our school, offering a range of motivational rewards to help keep positive behaviour on track.



- *Each day, children start fresh on 'blank'.
- *If rules and core values are being adhered to, then the children will move up through the green triangle (rewards explained on the right).
- *If rules and core values are not being adhered to, then children will move down through the red triangle (consequences explained below).
- *Children can move up and down both the red and green triangle throughout the course of the day.
- *A purple card cannot be earned back.

IT'S GOOD TO BE GREEN

You can receive a 'Platinum Card' for going 'above and beyond' - you will receive a sticker on your bookmark, a certificate and a prize.



If you end your day on a 'Gold Card', you will receive a sticker on your bookmark.

When you have collected all of the stickers on the front of your bookmark, you will receive:

- a certificate
- a dip in the prize box.

When you have collected all of the stickers on the back of your bookmark, you will receive:

- an invite for your grown-ups to join us in a celebration assembly (when assemblies are restarted)
- a certificate and a badge.



Places on the 'Wheel of Praise' are on offer at all times for showing a good attitude and lots of effort. At the end of each day, the 'Wheel of Praise' will be spun in each classroom and the winner will receive a dip in the prize box.



Consistently Good Behaviour



IF YOU ARE ALWAYS 'GREEN'
At the end of each half term, if you have managed to stay 'green' for that half term, you will receive a 'treat activity'.

RED TRIANGLE

Warning Card

If you end your day on a 'Yellow Card', you will miss 5 minutes of your 'Good to be Green' time. (You will miss 5 minutes per yellow card received during the week).

If you end your day on a 'Red Card':

- 1) you will carry out 'reflection time' with a member of the leadership team at the end of the day
- 2) your parents/carers will be contacted
- 3) you will miss 10 minutes of your 'Good to be Green' time. (You will miss 10 minutes per red card received during the week).

Consequence Card

NON NEGOTIABLES

You will automatically receive a PURPLE CARD for:

- Deliberate physical contact (including retaliation)
- Swearing
- Racism
- Stealing
- Refusal to complete work



If you receive a purple card:

- 1) you will carry out 'reflection time' with a member of the leadership team at the end of the day
- 2) your parents/carers will be contacted
- 3) you will miss all of your 'Good to be Green' time.

Other Year Group Specific Information:

Welcome back after the Easter break. We are very much looking forward to kicking off the Summer term with a new topic; Castles. So many exciting things to look forward to this term and lots of opportunities to get outside now the weather is warming up. With this in mind, please send your child with a bottle of water labelled with their name each day and a sun hat. If it is going to be a sunny day, please ensure you have put sun tan lotion on your child before they come to school. Please label all items of your child's uniform.

Can you please encourage your child to practise their spellings each week and read with them at home as often as you can.

As always, if there is anything that we can support you with, please make contact with us via the school office or by using our year group email address.
Year 1 team.