

## Year 5 – Spring Term – Visionary Victorians

*This grid outlines the knowledge and skills that Year 5 children will gain throughout this term's topic.*

### As readers we will:

Be exploring our use of inference skills through fiction and non-fiction texts.  
Be investigating different text types through retrieval skills.  
Be exploring language within texts that we have engaged with.



### As mathematicians we will:

Revise number and place value looking at negative numbers.  
Recognise square and prime numbers.  
Solve addition and subtraction multi-step problems.  
Add and subtract fractions.  
Calculate the area and perimeter of shapes.  
Explore shapes and angles.



### As writers we will:

Be writing a diary entry based upon a character from our class text.  
Be writing a comparative text making sure we have a balanced argument.  
Write a newspaper report about pickpockets within Victorian life.



### As scientists we will:

Learn about animals including humans.  
Understand the functions of the digestive system  
Investigate the changes in humans  
Investigate naturalists: Alfred Russell Wallace and Darwin.



### As historians we will:

Learn about the history of the Victorians (Industrial Revolution as a turning point).  
Investigate what life was like for children, including working and education.  
Explore how life changed through the Victorian era and look at the significant achievements made by Victorians.



### As geographers we will:

Learn about the British Empire.  
Use map work skills to find countries and cities (UK and abroad) and compare them.  
Learn about human geography.  
Understand more using maps, atlases, globes and digital/computer mapping to locate countries and describe features studied.



### As artists and designers we will:

Explore the work of William Morris – textiles/ wallpaper printing decoupage.  
Use our sketching, painting and modelling skills.  
Investigate and create Pre-Raphaelites paintings.



Create Victorian moving toys – create a pop up toy shop.  
Design, make and evaluate a bridge inspired by Brunel.

### In computing we will:

Creating spreadsheets on Purple Mash.  
Investigating databases on Purple Mash.  
Learn all about coding and have a go at creating our own codes by making our own computer games.



### In Spanish we will:

Name buildings and ask for directions in Spanish and create actions for these.  
Explore colours in Spanish and use this to describe objects in the classroom.



### In RE we will:

Explore and identify the different religions in the UK.  
Find out the main beliefs of each of these religions.  
Represent our findings in a creative way.



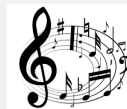
### In PSHE we will:

Considering what life was like for families in the Victorian era.  
Investigate healthy foods and their benefits.



### As musicians we will:

Learn how to play the ukulele with different songs and techniques.  
Listen to and discuss a range of Victorian music as well as having an opinion about the song.



### In PE we will:

Play competitive games, and begin to apply basic principles suitable for attacking and defending.



## At Perry Hall:

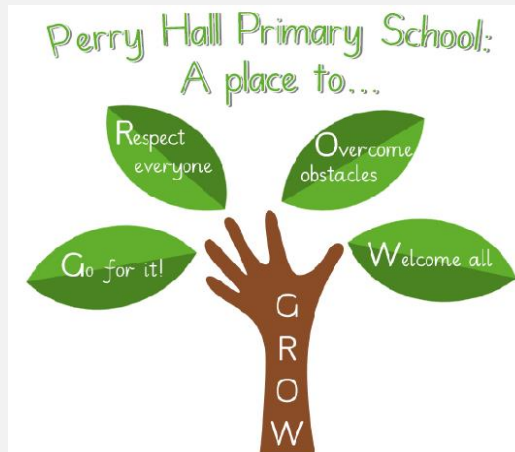
As part of our Social, Moral, Spiritual and Cultural curriculum we will continue to interweave our school motto and core values into everything we do.

### Motto:

**Perry Hall Primary, a place to grow in confidence, creativity and ability.**

### At Perry Hall we are:

**Respectful, Caring, Determined – never give up, Enthusiastic, Independent and Motivated.**



## Breakfast Club and Afterschool Club:

If you wish to book your child into breakfast or



afterschool club or need to make contact with the staff, please use: [phbreakfast-asc@perryhallmat.co.uk](mailto:phbreakfast-asc@perryhallmat.co.uk)



## Medical:

For any pupil medical related issues that you need to inform us about, please contact the appropriate staff using: [phmedical@perryhallmat.co.uk](mailto:phmedical@perryhallmat.co.uk)



## Homework:

Year 5 Homework	What is required?	Given out?	Due back in?	Where will I find this?	Do I need a login?
Reading: School reading book (weekly)	Reading books will be sent home each <b>Wednesday</b> and will need to be returned into school the following <b>Monday</b> .	Wednesday	Monday	Sent home with your child.	No.
Spelling (weekly)	A weekly spelling task will be assigned to your child for them to complete. (Spellings will be taken from the words focused on in your child's spelling group).	New spellings issued: Friday	Spellings tested the following Friday	Spellings book sent home with your child.	No
Mathematics (weekly)	A weekly maths task will be given to your child for them to complete.	Friday	Tuesday	Homework folder	No
Timetable Rockstars (daily/weekly)	Daily/weekly times tables practice. Your child's class teacher will set a variety of challenges.	Friday	Tuesday	<a href="https://play.ttrockstars.com/auth/school/student/30021">https://play.ttrockstars.com/auth/school/student/30021</a>	Yes, see your child's reading record
Topic Grid (termly)	A range of engaging tasks related to your child's termly topic and covering all curriculum areas, will be set each term. Children are to work through these tasks and send evidence of their complete outcomes to their year group email address.	Towards the start of the term	Throughout the term	Homework folder	No

## School Uniform:

Children **must wear full, winter uniform**. Uniform plays a valuable role in contributing to our school ethos and helps to set an appropriate tone. We thank you in advance for supporting us in upholding our standards.

### Girls:

- **white polo shirt/blouse and grey skirt / pinafore / trousers with a green cardigan.**
- **plain black, low heeled shoes.**

### Boys:

- **grey trousers and white shirt with a school tie/polo shirt with a green jumper**
- **plain black school shoes (no trainers/pumps).**

*Uniform can be purchased from Kids Corner.*

## PE days & Uniform Reminder:

This term, your child's PE day is a **Thursday**.

On each **Thursday**, please send your child into school wearing their PE kit.

A reminder, PE kit entails:

- plain white t-shirt
- plain black jogging bottoms/shorts
- plain black zip up/jumper
- trainers.

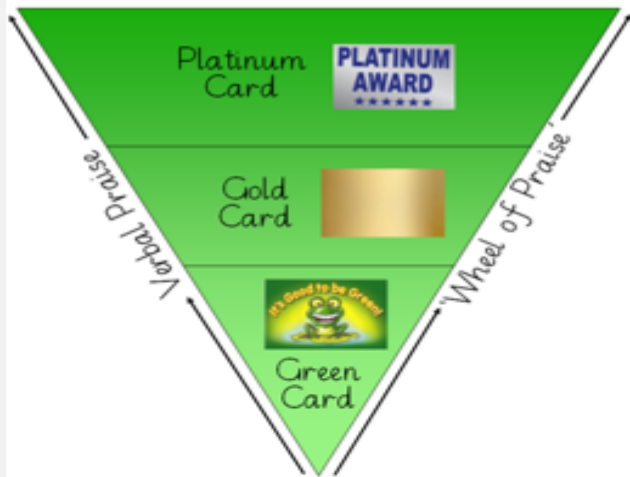
## Year Group Email Address:

Reminder, your child's year group email address is: [ph.y5homelearning@perryhallmat.co.uk](mailto:ph.y5homelearning@perryhallmat.co.uk)

Please use this, if you need to make contact with your child's year group staff.



# Good to be Green 2021



**IT'S GOOD TO BE GREEN!**



We strive to adopt a fair approach to behaviour management within our school, offering a range of motivational rewards to help keep positive behaviour on track.



- \*Each day, children start fresh on 'blank'.
- \*If rules and core values are being adhered to, then the children will move up through the green triangle (rewards explained on the right).
- \*If rules and core values are not being adhered to, then children will move down through the red triangle (consequences explained below).
- \*Children can move up and down both the red and green triangle throughout the course of the day.
- \*A purple card cannot be earned back.



## IT'S GOOD TO BE GREEN

You can receive a 'Platinum Card' for going 'above and beyond' - you will receive a sticker on your bookmark, a certificate and a prize.

If you end your day on a 'Gold Card', you will receive a sticker on your bookmark.

When you have collected all of the stickers on the front of your bookmark, you will receive:

- a certificate
- a dip in the prize box.

When you have collected all of the stickers on the back of your bookmark, you will receive:

- an invite for your grown-ups to join us in a celebration assembly (when assemblies are restarted)
- a certificate and a badge.



Places on the 'Wheel of Praise' are on offer at all times for showing a good attitude and lots of effort. At the end of each day, the 'Wheel of Praise' will be spun in each classroom and the winner will receive a dip in the prize box.



**IF YOU ARE ALWAYS 'GREEN'**  
At the end of each half term, if you have managed to stay 'green' for that half term, you will receive a 'treat activity'.



## RED TRIANGLE

### Warning Card

If you end your day on a 'Yellow Card', you will miss 5 minutes of your 'Good to be Green' time. (You will miss 5 minutes per yellow card received during the week).

If you end your day on a 'Red Card':

- 1) you will carry out 'reflection time' with a member of the leadership team at the end of the day
- 2) your parents/carers will be contacted
- 3) you will miss 10 minutes of your 'Good to be Green' time. (You will miss 10 minutes per red card received during the week).

### Consequence Card

## NON NEGOTIABLES

You will automatically receive a PURPLE CARD for:

- Deliberate physical contact
- Swearing
- Racism
- Stealing
- Refusal to complete work



If you receive a purple card:

- 1) you will carry out 'reflection time' with a member of the leadership team at the end of the day
- 2) your parents/carers will be contacted
- 3) you will miss all of your 'Good to be Green' time.

## Other Year Group Specific Information:

Happy New Year 5!

For our next topic, we will be looking at the Victorians which we are really looking forward to learning all about!

Reminder: This term we will be going swimming on Monday's. 5MJ will be the first to attend during Spring 1 and 5CN will attend after half term in Spring 2.

We are also super excited to have a Vocal coach working with Year 5 this term who will be teaching the children some singing techniques. We hope that the children have all warmed up their voices over the Christmas break!

If you or your child have any questions at any point, please do speak to a member of the team and we will be more than happy to help.

Here's to a fantastic 2022!

Miss Jones, Miss Newell, Mrs Lewis and Mrs Wardle.

