

Year 1 – Spring Term– 2022 – Jetsetters

This grid outlines the knowledge and skills that Year 1 children will gain throughout this term's topic.

As readers we will:

- Listen to and discuss a wide range of stories and non-fiction books.
- Read accurately by blending sounds.
- Be able to retrieve information from a text.
- Begin to use expression and intonation when reading aloud.
- Join in with repeated phrases and retell stories orally.
- Be able to identify characters, events and settings in stories.
- Predict what will happen next in an unfamiliar story.
- Extend our knowledge and understanding of new vocabulary.



As mathematicians we will:

- Use concrete materials such as counters, dienes and numicon.
- Become familiar with reasoning and problem-solving tasks.
- To count to and back from 100.
- Read and write numbers to 20 in numerals and words.
- Begin to solve one step problems involving addition and subtraction.
- Recognise and name common 2D and 3D shapes.
- Tell the time to the hour and half past the hour.
- Recognise the value of different denominations of coins and notes.
- Begin to understand multiplication through the use of arrays and 'equal groups' with dienes units.
- Begin to understand division through grouping and sharing quantities.
- Measure and begin to record mass/weight.



As writers we will:

- Recognise what a sentence looks like.
- Know what nouns, verbs and adjectives are.
- Compose sentences orally to ensure they make sense.
- Begin to use capital letters, finger spaces and full stops.
- Begin to join sentences using connectives (and, because).
- Be able to write character or setting descriptions.
- Retell a familiar story with a clear beginning, middle and end.
- Write an alternative ending to a familiar story.
- Gather information from a variety of sources and make simple notes.
- Plan and write a non-chronological report.



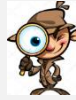
As scientists we will:

- Ask simple scientific questions.
- Use simple equipment to make scientific observations.
- Suggest what have found out using our observations.
- Observe animals in my local environment.
- To describe and compare the structure of a variety of common animals.
- To classify animals based on their diet.
- To sort animals according to criteria.
- To identify, name and label parts of the human body.
- To know the five senses and perform simple tests to find out about them.



As historians we will:

- Sequence events in chronological order.
- Describe similarities and differences.
- Identify different ways to represent the past.
- Learn about the significant lives of people from the past.
- Use a range of sources to find out characteristic features of the past.
- Learn about different types of transport throughout the ages.



As geographers we will:

- Use basic geographical vocabulary.
- To understand the term physical and human features.
- To explore the key human features of our local area.
- To name and locate countries and capital cities that Barnaby has visited.
- To understand geographical similarities and differences between these places.



As designers we will:

- Plan and design a product by modelling and communicating our ideas.
- Select and use the correct tools to perform practical tasks.
- Explore and evaluate a range of existing products.
- To learn about and use wheels and axels.



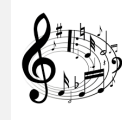
As artists we will:

- Develop a wide range of art and design technique in using colour, pattern and shape.
- Use drawing, painting and sculpture to develop and share ideas, experiences and imagination.
- Learn about the work of canal boat artists.
- Create our own 'castles' and 'roses' design.



As musicians we will:

- Listen to and appraise a piece of music.
- Explore different styles of music.
- Use our voice to sing a variety of songs.
- Use different percussion instruments in time with music.
- Understand the terms 'rhythm' and 'tempo'.



In PE we will:

- To take part in collaborative team games and develop simple tactics for attacking and defending.
- Explore how to move and control a ball in different ways.
- To develop competency with basic movements including running, jumping, throwing and catching.
- Understand the movement patterns required to collaborate a dance sequence.
- To develop balance, agility and co-ordination.
- Begin to apply these in a range of activities.



In computing we will:

- To use technology safely and respectfully keeping personal information private.
- Practise logging on and navigating independently.
- To explain what a given command will do.
- To combine forwards and backwards commands to make a sequence.
- To plan a simple program.



In PSHE we will:

- To understand that the body gets energy from food, water and air.
- To recognise the importance of sleep in maintaining a healthy, balanced lifestyle.
- To recognise emotions and physical feelings associated with feeling unsafe.
- To recognise the range of feelings that are associated with loss.
- To know simple issues of safety and responsibility about medicines and their use.



In RE we will:

- Share our own understanding of our own religions and religious festivals we have celebrated.
- To become aware that people have different kinds of qualities and powers.
- To know that Jesus taught others how to pray and that the Lord's prayer is an important Christian prayer, used by millions.
- To reflect on the meaning of the Lord's prayer through speaking and listening and creative work.



At Perry Hall:

As part of our Social, Moral, Spiritual and Cultural curriculum we will continue to interweave our school motto and core values into everything we do.

Motto:

Perry Hall Primary, a place to grow in confidence, creativity and ability.

At Perry Hall we are:

Respectful, Caring, Determined – never give up, Enthusiastic, Independent and Motivated.



Breakfast Club and Afterschool Club:

If you wish to book your child into breakfast or afterschool club or need to make contact with the staff, please use: phbreakfast-asc@perryhallmat.co.uk



Medical:

For any pupil medical related issues that you need to inform us about, please contact the appropriate staff using: phmedical@perryhallmat.co.uk



School Uniform:

Children **must wear full, winter uniform** by October half term. Uniform plays a valuable role in contributing to our school ethos and helps to set an appropriate tone. We thank you in advance for supporting us in upholding our standards.

Girls:

- **white polo shirt/blouse (optional school tie) and grey skirt / pinafore / trousers with a green cardigan (school logo available)**
- **plain black, low heeled shoes.**

Boys:

- **grey trousers and white shirt with a school tie/polo shirt with a green jumper**
- **plain black school shoes (no trainers/pumps).**

Uniform can be purchased from Kids Corner.

PE days & information:

This term, your child's PE day is a **Wednesday**.

On each **Wednesday**, please send your child into school wearing their PE kit.

A reminder, PE kit entails:

- plain white t-shirt
- plain black jogging bottoms/shorts
- plain black zip up/jumper
- trainers

(No logos or slogans please).

Year Group Email Address:

Reminder, your child's year group email address is:

ph.y1homelearning@perryhallmat.co.uk

Please use this, if you need to make contact with your child's year group staff.



Homework:

Year 1 homework	What is required?	Given out?	Due back in?	Where will I find it	Do I need a login?
Reading School reading book (weekly)	Reading books will be sent home each Wednesday and will need to be returned into school the following Monday	Wednesday	Mon/Tue	Sent home with your child	No
Spellings (weekly)	A weekly spelling activity sheet will be sent home each Friday. Spellings will be matched to your child's phonics group.	Friday	Spellings tested the following Friday	Sent home with your child inside blue homework book	No
Mathematics (weekly)	A weekly Maths task will be given to your child for them to complete	Friday	Tue	Sent home inside blue homework book	No
RWI (weekly)	A new e-book will be assigned to your child on Oxford Owl each Friday	Friday	NA	Oxford Owl	Yes
Topic Grid (termly)	A range of engaging tasks related to your child's termly topic and covering all curriculum areas will be set each term. Children are to work through these tasks and send evidence of their completed outcomes to their year group email address.	At the start of the term	Throughout the term as and when completed	Sent home with your child inside blue homework book	No

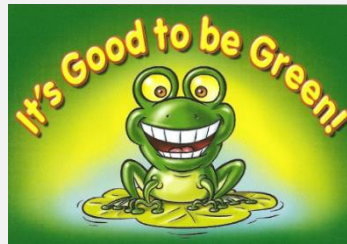
Good to be Green Reminder:



IT'S GOOD TO BE GREEN!



We strive to adopt a fair approach to behaviour management within our school, offering a range of motivational rewards to help keep positive behaviour on track.



- *Each day, children start fresh on 'blank'.
- *If rules and core values are being adhered to, then the children will move up through the green triangle (rewards explained on the right).
- *If rules and core values are not being adhered to, then children will move down through the red triangle (consequences explained below).
- *Children can move up and down both the red and green triangle throughout the course of the day.
- *A purple card cannot be earned back.

IT'S GOOD TO BE GREEN

You can receive a 'Platinum Card' for going 'above and beyond' - you will receive a sticker on your bookmark, a certificate and a prize.

If you end your day on a 'Gold Card', you will receive a sticker on your bookmark.

When you have collected all of the stickers on the front of your bookmark, you will receive:

- a certificate
- a dip in the prize box.

When you have collected all of the stickers on the back of your bookmark, you will receive:

- an invite for your grown-ups to join us in a celebration assembly (when assemblies are restarted)
- a certificate and a badge.

Places on the 'Wheel of Praise' are on offer at all times for showing a good attitude and lots of effort. At the end of each day, the 'Wheel of Praise' will be spun in each classroom and the winner will receive a dip in the prize box.

IF YOU ARE ALWAYS 'GREEN'

At the end of each half term, if you have managed to stay 'green' for that half term, you will receive a 'treat activity'.

RED TRIANGLE

Warning Card

If you end your day on a 'Yellow Card', you will miss 5 minutes of your 'Good to be Green' time. (You will miss 5 minutes per yellow card received during the week).

If you end your day on a 'Red Card':

- 1) you will carry out 'reflection time' with a member of the leadership team at the end of the day
- 2) your parents/carers will be contacted
- 3) you will miss 10 minutes of your 'Good to be Green' time. (You will miss 10 minutes per red card received during the week).

Consequence Card

NON NEGOTIABLES

You will automatically receive a PURPLE CARD for:

- Deliberate physical contact (including retaliation)
- Swearing
- Racism
- Stealing
- Refusal to complete work



If you receive a purple card:

- 1) you will carry out 'reflection time' with a member of the leadership team at the end of the day
- 2) your parents/carers will be contacted
- 3) you will miss all of your 'Good to be Green' time.

Other Year Group Specific Information:

- RWI – children will be following the phonics program Read Write Inc every morning
- Phonics check – during the Summer Term children will complete a phonics screening check – more information to be given during the Spring Term
- Reading books should be returned to school each Monday and will be given out the following Thursday.
- Please ensure children are wearing an appropriate PE kit each Wednesday. This will be a tracksuit, t-shirt and trainers.

We are really looking forward to Jetsetting off on our Spring Term adventures with Year 1. It is going to be a fantastic term with lots of adventures, fun, learning and growing. We cannot wait to see what this term brings. Please email us on our year group email address or call into school if there is anything you need.