

# Year 3 – Autumn Term – The Stone Age – How did people in The Stone Age survive?

*This grid outlines the knowledge and skills that Year 3 children will gain throughout this term's topic.*

## As readers we will:

Be exploring a range of fiction and non-fiction texts and using our KS2 reading domains to develop our understanding of them. We will be particularly focussing on retrieval and inference skills and practicing reading independently, in pairs and as a class to build confidence.



## As mathematicians we will:

Be developing our knowledge of place value by looking at numbers up to 1000. We will look at how to complete addition and subtraction calculations using mental and written strategies. We will also learn about shapes, including identifying horizontal and vertical lines and different types of turns.



## As writers we will:

Be embedding our knowledge on sentence structure and KS1 skills, whilst introducing new skills to our writing. We will look at a range of text genres including diary entries, stories and non-chronological reports. We will also develop our writing stamina as well as working on our handwriting presentation.



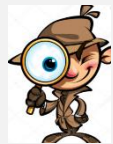
## As scientists we will:

Be learning about different forces that we see in our everyday lives. This includes the different types of push and pull forces, gravity and magnetism. With magnetism, we will look at the effect of different materials as well as the relationship with other magnets. We will work scientifically to ask our own questions and carry out our own experiments to find our answers.



## As historians we will:

- Learn about how people in the Stone Age lived, and how their lives changed over time.
- Look at diets, homes and lifestyles of The Stoneage. We will use artefacts to develop our knowledge and understanding.



## As geographers we will:

- Learn about the differences between human and physical geography.
- Develop our use of maps, compasses and coordinates to locate different countries and places.



## As artists and designers we will:

- Learn about famous artists and reflect on their work.
- Use different artistic methods, techniques and resources creatively. This includes different pencil techniques and the use of watercolours.



## In computing we will:

- Develop our knowledge of key vocabulary.
- Practice coding simple algorithms using online coding programmes. This will include testing and debugging our own code.



## In Spanish we will:

- Be introduced to speaking a new language by learning basic greetings, commands and numbers to 10.
- Speak with a Spanish accent and intonation.



## In RE we will:

- Find out about common religions that exist within our school year group and in the wider community.
- Learn about how different religions worship.



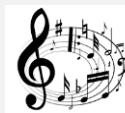
## In PSHE we will:

- Learn about the importance of friendship and how to treat others.
- Develop our skills to work well in teams and with new people, so that we show them respect and value each other's opinions.



## As musicians we will:

- Listen to a range of music with a greater attention to detail to the sounds and instruments we can hear.
- Perform and improvise our own pieces of music.



## In PE we will:

- Learn about health related fitness, considering different muscle groups, stamina and flexibility.
- Use our learning to try to run faster and more efficiently.



## At Perry Hall:

As part of our Social, Moral, Spiritual and Cultural curriculum we will continue to interweave our school motto and core values into everything we do.

### Motto:

**Perry Hall Primary, a place to grow in confidence, creativity and ability.**

### At Perry Hall we are:

**Respectful, Caring, Determined – never give up, Enthusiastic, Independent and Motivated.**



## Breakfast Club and Afterschool Club:

If you wish to book your child into breakfast or afterschool club or need to make contact with the staff, please use: [phbreakfast-asc@perryhallmat.co.uk](mailto:phbreakfast-asc@perryhallmat.co.uk)



## Medical:

For any pupil medical related issues that you need to inform us about, please contact the appropriate staff using: [phmedical@perryhallmat.co.uk](mailto:phmedical@perryhallmat.co.uk)



## Homework:

Year 3 Homework	What is required?	Given out?	Due back in?	Where will I find this?	Do I need a login?
Reading: School reading book (weekly)	Reading books will be sent home each <b>Wednesday</b> and will need to be returned into school the following <b>Monday</b> .	Wednesday	Monday	Sent home with your child.	No.
Spelling	Your child will be bringing home a 'spelling <u>log book</u> ' where they are recording the words they are finding tricky in their spelling set that week. This book will be coming home each day for the children to practise. It needs to be returned to school each day.  Children will be tested on their spellings throughout the week.			<u>Spellings</u> book sent home with your child.	No
Mathematics (weekly)	A weekly maths task will be given to your child for them to complete.	Friday	Tuesday	Homework folder	No
Timetable Rockstars (daily/weekly)	Daily/weekly times tables practice. Your child's class teacher will set a variety of challenges.	Friday	Tuesday	<a href="https://play.ttrackstarts.com/auth/school/student/30021">https://play.ttrackstarts.com/auth/school/student/30021</a>	Yes, see your child's reading record
Topic Grid (termly)	A range of engaging tasks related to your child's termly topic and covering all curriculum areas, will be set each term. Children are to work through these tasks and send evidence of their complete outcomes to their year group email address.	Towards the start of the term	Throughout the term	Homework folder	No

## School Uniform:

Children **must wear full, winter uniform**. Uniform plays a valuable role in contributing to our school ethos and helps to set an appropriate tone. We thank you in advance for supporting us in upholding our standards.

### Girls:

- white polo shirt/blouse and grey skirt / pinafore / trousers with a green cardigan.
- plain black, low heeled shoes.

### Boys:

- grey trousers and white shirt with a school tie/polo shirt with a green jumper
- plain black school shoes (no trainers/pumps).

*Uniform can be purchased from Kids Corner.*

## PE days & Uniform Reminder:

This term, your child's PE day is a **Monday**.

On each **Monday**, please send your child into school wearing their PE kit.

A reminder, PE kit entails:

- plain white t-shirt
- plain black jogging bottoms/shorts
- plain black zip up/jumper
- trainers.

## Year Group Email Address:

Reminder, your child's year group email address is: [ph.y3homelearning@perryhallmat.co.uk](mailto:ph.y3homelearning@perryhallmat.co.uk)

Please use this, if you need to make contact with your child's year group staff.





We strive to adopt a fair approach to behaviour management within our school, offering a range of motivational rewards to help keep positive behaviour on track.



- \*Each day, children start fresh on 'blank'.
- \*If rules and core values are being adhered to, then the children will move up through the green triangle (rewards explained on the right).
- \*If rules and core values are not being adhered to, then children will move down through the red triangle (consequences explained below).
- \*Children can move up and down both the red and green triangle throughout the course of the day.
- \*A purple card cannot be earned back.

**IT'S GOOD TO BE GREEN**

You can receive a 'Platinum Card' for going 'above and beyond' - you will receive a sticker on your bookmark, a certificate and a prize.

If you end your day on a 'Gold Card', you will receive a sticker on your bookmark.

When you have collected all of the stickers on the front of your bookmark, you will receive:

- a certificate
- a dip in the prize box.

When you have collected all of the stickers on the back of your bookmark, you will receive:

- an invite for your grown-ups to join us in a celebration assembly (when assemblies are restarted)
- a certificate and a badge.

Places on the 'Wheel of Praise' are on offer at all times for showing a good attitude and lots of effort. At the end of each day, the 'Wheel of Praise' will be spun in each classroom and the winner will receive a dip in the prize box.

**Consistently Good Behaviour**

**IF YOU ARE ALWAYS 'GREEN'**  
At the end of each half term, if you have managed to stay 'green' for that half term, you will receive a 'treat activity'.

## RED TRIANGLE

### Warning Card

If you end your day on a 'Yellow Card', you will miss 5 minutes of your 'Good to be Green' time. (You will miss 5 minutes per yellow card received during the week).

If you end your day on a 'Red Card':

- 1) you will carry out 'reflection time' with a member of the leadership team at the end of the day
- 2) your parents/carers will be contacted
- 3) you will miss 10 minutes of your 'Good to be Green' time. (You will miss 10 minutes per red card received during the week).

### Consequence Card

## NON NEGOTIABLES

You will automatically receive a PURPLE CARD for:

- Deliberate physical contact
- Swearing
- Racism
- Stealing
- Refusal to complete work



If you receive a purple card:

- 1) you will carry out 'reflection time' with a member of the leadership team at the end of the day
- 2) your parents/carers will be contacted
- 3) you will miss all of your 'Good to be Green' time.

## Other Year Group Specific Information:

Welcome to Year 3!

As a team, we are very excited for the adventures and learning that lie ahead for our pupils across the upcoming year. We have lots of exciting activities lined up across the academic year that we think pupils will really enjoy and learn a lot from too.

Next year, when your child is in Year 4, all children will complete the statutory MTC (Multiplication Tables Check) and so there will be lots of preparation and focus upon children learning their times tables throughout this academic year, to ensure they are as prepared as possible for this. Practice makes perfect, so any support you can offer at home to help your child learn their times tables would be much appreciated. In Year 3, we will be building on our 2s, 5s and 10s knowledge and learning our 3s, 4s and 8 timetables.

If you or your child have any questions at any point, please do speak to a member of the team and we'll be more than happy to help.

Here's to a fantastic school year!

Mr Gardner, Miss Salter and Miss Gaunt

