

Year 2 – Autumn Term– 2021 – The Great Fire of London

This grid outlines the knowledge and skills that Year 1 children will gain throughout this term's topic.

As readers we will:

Be continuing to underpin our phonics knowledge and develop what we already know. This will flow into our reading books which will come home on a weekly basis.



As mathematicians we will:

Begin by investigating place value and its relationships with the wider areas of maths. This will then progress onto addition, where we will investigate number bonds to 10 and to 20. After this, we will move away from number and will investigate 2D shape and their properties.



As writers we will:

Reading and discussing the book 'The Barnabus Project' and 'The Bear and the Piano'. This book will inform our descriptive writing, where we will be looking at forming sentences using nouns, verbs and a range of descriptive adjectives.



As scientists we will:

Investigate Animals including Humans. We will identify and sort animals based on their physical features. We will also investigate their diet and that animals, including humans, can be categorised based on diet.



As historians we will:

Look at the history of 'The Great Fire of London'. We will begin by comparing the differences and similarities between ways of life in different time periods, and we will then place the time studied on a timeline.



We will further investigate The Great Fire of London from the perspective of Samuel Pepys.

As geographers we will:

Investigate the UK, its capital city and other cities, locating and marking these on a map and globe. We will also identify and classify geographical features such as human and physical features.



As designers we will:

Investigate the layout of London and its houses during the medieval period. We will study the construction of houses during this time period, and this will inform our design project. We will design, make and evaluate a replica medieval house from this time period.



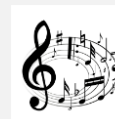
As artists we will:

Look at the work of Lieve Vershuier. We will investigate his art work based around The Great Fire of London. We will create a colour palette, investigate tints and tones and how to adjust them, whilst creating a piece of art.



As musicians we will:

Listen to, appraise and reflect on 'The Friendship Song'. We will investigate similarities and differences between other songs.



In PE we will:

Begin by working on our gymnastics. We will look at ways to travel whilst creating patterns and sequences as an individual and part of a team performance.



In computing we will:

Be learning about information and technology that surrounds us. We will investigate what information technology is and how this term impacts our daily life. We will furthermore be discussing how to responsibly use technology and how this could impact us.



In PSHE we will:

Be learning about relationships. This will include classroom rules and the relationships associated with these; feelings and how these impact upon my relationships; bullying and teasing and the negative impacts these can have on relationships; and finally how to be a good friend.



In RE we will:

Investigate and share our religious beliefs within our Year 2 cohort. We will discuss how each religion differs but is equally respected amongst all children.



At Perry Hall:

As part of our Social, Moral, Spiritual and Cultural curriculum we will continue to interweave our school motto and core values into everything we do.

Motto:

Perry Hall Primary, a place to grow in confidence, creativity and ability.

At Perry Hall we are:

Respectful, Caring, Determined – never give up, Enthusiastic, Independent and Motivated.



Breakfast Club and Afterschool Club:

If you wish to book your child into breakfast or

afterschool club or need to make contact with the staff, please use: phbreakfast-asc@perryhallmat.co.uk



Medical:

For any pupil medical related issues that you need to inform us about, please contact the appropriate staff using: phmedical@perryhallmat.co.uk



School Uniform:

Children **must wear full, winter uniform** by October half term. Uniform plays a valuable role in contributing to our school ethos and helps to set an appropriate tone. We thank you in advance for supporting us in upholding our standards.

Girls:

- white polo shirt/blouse (optional school tie) and grey skirt / pinafore / trousers with a green cardigan (school logo available)
- plain black, low heeled shoes.

Boys:

- grey trousers and white shirt with a school tie/polo shirt with a green jumper
- plain black school shoes (*no trainers/pumps*).

Uniform can be purchased from Kids Corner.

PE days & information:

This term, your child's PE day is a **Tuesday**.

On each **Tuesday**, please send your child into school wearing their PE kit.

A reminder, PE kit entails:

- plain white t-shirt
- plain black jogging bottoms/shorts
- plain black zip up/jumper
- trainers

(No logos or slogans please).

Year Group Email Address:

Reminder, your child's year group email address is:

ph.y2homelearning@perryhallmat.co.uk

Please use this, if you need to make contact with your child's year group staff.



Homework:

Year 2 Homework	What is required?	Given out?	Due back in?	Where will I find this?	Do I need a login?
Reading: School reading book (weekly)	Reading books will be sent home each Wednesday and will need to be returned into school the following Monday .	Wednesday	Monday	Sent home with your child.	No.
Spelling (weekly)	A weekly spelling task will be assigned to your child for them to complete. (Spellings will be taken from the words focused on in your child's spelling group).	New spellings issued: Friday	Spellings tested the following Friday	Spellings book sent home with your child.	No
Mathematics (weekly)	A weekly maths task will be given to your child for them to complete.	Friday	Tuesday	Homework folder	No
RWI (weekly)	A weekly link will be sent home for the video of the sounds your child is learning in school. A link will also be sent for their RWI e-book if relevant.	Friday	Thursday	Text	No
Timetable Rockstars (daily/weekly)	Daily/weekly times tables practice. Your child's class teacher will set a variety of challenges.	Friday	Tuesday	https://play.ttrackstarts.com/auth/school/student/30021	Yes, see your child's reading record
Topic Grid (termly)	A range of engaging tasks related to your child's termly topic and covering all curriculum areas, will be set each term. Children are to work through these tasks and send evidence of their complete outcomes to their year group email address.	Towards the start of the term	Throughout the term	Homework folder	No

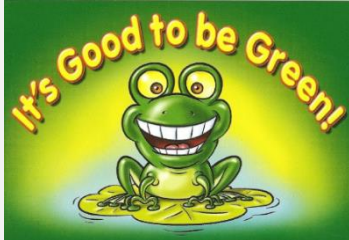
Good to be Green Reminder:



IT'S GOOD TO BE GREEN!



We strive to adopt a fair approach to behaviour management within our school, offering a range of motivational rewards to help keep positive behaviour on track.



- *Each day, children start fresh on 'blank'.
- *If rules and core values are being adhered to, then the children will move up through the green triangle (rewards explained on the right).
- *If rules and core values are not being adhered to, then children will move down through the red triangle (consequences explained below).
- *Children can move up and down both the red and green triangle throughout the course of the day.
- *A purple card cannot be earned back.

IT'S GOOD TO BE GREEN

You can receive a 'Platinum Card' for going 'above and beyond' - you will receive a sticker on your bookmark, a certificate and a prize.

If you end your day on a 'Gold Card', you will receive a sticker on your bookmark.

When you have collected all of the stickers on the front of your bookmark, you will receive:

- a certificate
- a dip in the prize box.

When you have collected all of the stickers on the back of your bookmark, you will receive:

- an invite for your grown-ups to join us in a celebration assembly (when assemblies are restarted)
- a certificate and a badge.

Places on the 'Wheel of Praise' are on offer at all times for showing a good attitude and lots of effort. At the end of each day, the 'Wheel of Praise' will be spun in each classroom and the winner will receive a dip in the prize box.

IF YOU ARE ALWAYS 'GREEN'

At the end of each half term, if you have managed to stay 'green' for that half term, you will receive a 'treat activity'.

RED TRIANGLE

Warning Card

If you end your day on a 'Yellow Card', you will miss 5 minutes of your 'Good to be Green' time. (You will miss 5 minutes per yellow card received during the week).

If you end your day on a 'Red Card':

- 1) you will carry out 'reflection time' with a member of the leadership team at the end of the day
- 2) your parents/carers will be contacted
- 3) you will miss 10 minutes of your 'Good to be Green' time. (You will miss 10 minutes per red card received during the week).

Consequence Card

NON NEGOTIABLES

You will automatically receive a PURPLE CARD for:

- Deliberate physical contact (including retaliation)
- Swearing
- Racism
- Stealing
- Refusal to complete work



If you receive a purple card:

- 1) you will carry out 'reflection time' with a member of the leadership team at the end of the day
- 2) your parents/carers will be contacted
- 3) you will miss all of your 'Good to be Green' time.

Other Year Group Specific Information:

We are very much looking forward to welcoming the children into Year 2, getting to know each other and building up a positive and ambitious team. As always, if there are any problems or concerns please come and speak to us or email the Year 2 email address.

Below are a few key pieces of information for you to be aware of for the year ahead:

- Phonics check – Those children that are working below the expected standard in phonics will complete a phonics check during the Summer term.
- RWI – The Read Write Inc phonics program will continue to be implemented across Year 2 during the Autumn Term.
- SATS – SATs will be taking place the week of the 2nd May. More information will follow through a short presentation during the Spring Term.
- Residential - we are very excited that residential visits can resume. Those children that have signed up to the Year 2 residential will be attending Kingswood for a one night overnight stay during the Summer Term. More information and a presentation on this to follow.
- Reminder – Tuesday is Year 2 PE day. Children are to come into school wearing their PE kit.

Please let us know if there is anything you wish to discuss further and we will be more than happy to help. Here's to a fantastic year in Year 2!

From the Year 2 Team.