

# Year 1 – Autumn Term– 2021 – A voyage into Year 1/Fun & Games

*This grid outlines the knowledge and skills that Year 1 children will gain throughout this term's topic.*

## As readers we will:

- Listen to and discuss a wide range of stories and non-fiction books
- Read accurately by blending sounds
- Retrieve information from a text
- Begin to use expression and intonation when reading aloud
- Join in with repeated phrases and retell stories orally
- Be able to identify characters, events and settings in stories.



## As mathematicians we will:

- Use concrete materials such as counters, dienes and numicon
- Become familiar with reasoning and problem-solving tasks
- Identify one more and one less than a given number and across 100 forwards and backwards
- Read and write numbers to 20 in numerals and words
- Begin to solve one step problems involving addition and subtraction
- Recognise and name 2D shapes
- Sequence events in chronological order
- Tell the time to the hour and half past the hour.



## As writers we will:

- Recognise what a sentence looks like
- Know what nouns, verbs and adjectives are
- Compose sentences orally to ensure they make sense
- Begin to use capital letters, finger spaces and full stops
- Begin to join sentences using connectives (and, because)
- Be able to write character or setting descriptions.



## As scientists we will:

- Ask simple scientific questions
- Use simple equipment to make scientific observations
- Suggest what have found out using our observations
- Recognise simple forces including pushes and pulls
- Explore seasonal changes between Autumn and Winter.



## As historians we will:

- Sequence events in chronological order
- Describe similarities and differences
- Identify different ways to represent the past
- Learn about the significant lives of people from the past
- Use a range of sources to find out characteristic features of the past.



## As geographers we will:

- Use basic geographical vocabulary
- Name, locate and identify the four countries and capital cities of the United Kingdom
- Understand the term physical and human features.



## As designers we will:

- Plan and design a product by modelling and communicating our ideas
- Select and use the correct tools to perform practical tasks
- Explore and evaluate a range of existing products.



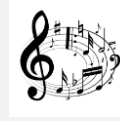
## As artists we will:

- Develop a wide range of art and design technique in using colour, pattern and shape
- Use drawing, painting and sculpture to develop and share ideas, experiences and imagination
- Learn about the work of two artists and the similarities and differences in their work.



## As musicians we will:

- Listen to and appraise a piece of music
- Explore different styles of music
- Use percussion instruments.



## In PE we will:

- Take part in collaborative team games.
- Explore how to move and control a ball in different ways
- Develop competency with basic movements including running and jumping
- Understand the movement patterns required to collaborate a dance sequence.



## In computing we will:

- Use technology safely and respectfully keeping personal information private
- Practise logging on and navigating independently
- Begin adding pictures and texts to my work.
- Use a computer program to sort and group animals.



## In PSHE we will:

- Learn about why we have classroom rules and help to create our own classroom rules
- Learn how to recognise facial expressions and body language to understand how others' are feeling
- Learn strategies for managing 'not-so-good' feelings
- Learn simple conflict resolution strategies
- Understand who helps us and how they help and the importance of safe, loving relationships.



## In RE we will:

- Share our own understanding of our own religions and religious festivals we have celebrated
- Learn about what Christians believe about God
- Learn about how and why Christians pray to God
- Learn about Sikhism.



## At Perry Hall:

As part of our Social, Moral, Spiritual and Cultural curriculum we will continue to interweave our school motto and core values into everything we do.

### Motto:

**Perry Hall Primary, a place to grow in confidence, creativity and ability.**

### At Perry Hall we are:

**Respectful, Caring, Determined – never give up, Enthusiastic, Independent and Motivated.**



## Breakfast Club and Afterschool Club:

If you wish to book your child into breakfast or

afterschool club or need to make contact with the staff, please use: [phbreakfast-asc@perryhallmat.co.uk](mailto:phbreakfast-asc@perryhallmat.co.uk)



## Medical:

For any pupil medical related issues that you need to inform us about, please contact the appropriate staff using: [phmedical@perryhallmat.co.uk](mailto:phmedical@perryhallmat.co.uk)



## School Uniform:

Children **must wear full, winter uniform** by October half term. Uniform plays a valuable role in contributing to our school ethos and helps to set an appropriate tone. We thank you in advance for supporting us in upholding our standards.

### Girls:

- white polo shirt/blouse (optional school tie) and grey skirt / pinafore / trousers with a green cardigan (school logo available)
- plain black, low heeled shoes.

### Boys:

- grey trousers and white shirt with a school tie/polo shirt with a green jumper
- plain black school shoes (*no trainers/pumps*).

*Uniform can be purchased from Kids Corner.*

## PE days & information:

This term, your child's PE day is a **Wednesday**.

On each **Wednesday**, please send your child into school wearing their PE kit.

A reminder, PE kit entails:

- plain white t-shirt
- plain black jogging bottoms/shorts
- plain black zip up/jumper
- trainers

*(No logos or slogans please).*

## Year Group Email Address:

Reminder, your child's year group email address is:

***ph.y1homelearning@perryhallmat.co.uk***

Please use this, if you need to make contact with your child's year group staff.



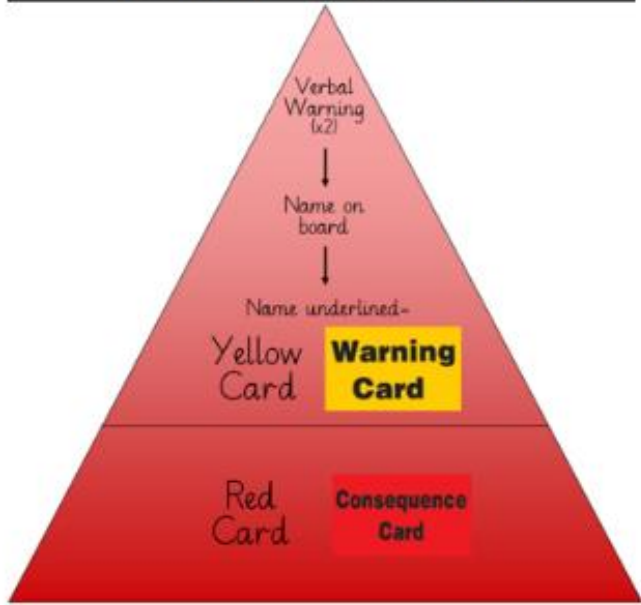
## Homework:

Year 1 Homework	What is required?	Given out?	Due back in?	Where will I find this?	Do I need a login?
Reading: School reading book (weekly)	Reading books will be sent home each <b>Wednesday</b> and will need to be returned into school the following <b>Monday</b> .	Wednesday	Monday	Sent home with your child.	No.
Spelling (weekly)	A weekly spelling task will be assigned to your child for them to complete. (Spellings will be taken from the words focused on in your child's spelling group).	New spellings issued: Friday	Spellings tested the following Friday	Spellings book sent home with your child.	No
Mathematics (weekly)	A weekly maths task will be given to your child for them to complete.	Friday	Tuesday	Homework folder	No
RWI (weekly)	A weekly link will be sent home for the video of the sounds your child is learning in school. A link will also be sent for their RWI e-book if relevant.	Friday	Thursday	Text	No
Topic Grid (termly)	A range of engaging tasks related to your child's termly topic and covering all curriculum areas, will be set each term. Children are to work through these tasks and send evidence of their complete outcomes to their year group email address.	Towards the start of the term	Throughout the term	Homework folder	No

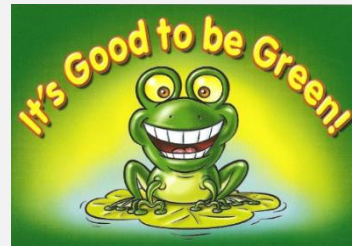
# Good to be Green Reminder:



**IT'S GOOD TO BE GREEN!**



We strive to adopt a fair approach to behaviour management within our school, offering a range of motivational rewards to help keep positive behaviour on track.



- \*Each day, children start fresh on 'blank'.
- \*If rules and core values are being adhered to, then the children will move up through the green triangle (rewards explained on the right).
- \*If rules and core values are not being adhered to, then children will move down through the red triangle (consequences explained below).
- \*Children can move up and down both the red and green triangle throughout the course of the day.
- \*A purple card cannot be earned back.

## IT'S GOOD TO BE GREEN

You can receive a 'Platinum Card' for going 'above and beyond' - you will receive a sticker on your bookmark, a certificate and a prize.



If you end your day on a 'Gold Card', you will receive a sticker on your bookmark.

When you have collected all of the stickers on the front of your bookmark, you will receive:

- a certificate
- a dip in the prize box.

When you have collected all of the stickers on the back of your bookmark, you will receive:

- an invite for your grown-ups to join us in a celebration assembly (when assemblies are restarted)
- a certificate and a badge.



Places on the 'Wheel of Praise' are on offer at all times for showing a good attitude and lots of effort. At the end of each day, the 'Wheel of Praise' will be spun in each classroom and the winner will receive a dip in the prize box.



**IF YOU ARE ALWAYS 'GREEN'**  
At the end of each half term, if you have managed to stay 'green' for that half term, you will receive a 'treat activity'.

## RED TRIANGLE

### Warning Card

If you end your day on a 'Yellow Card', you will miss 5 minutes of your 'Good to be Green' time. (You will miss 5 minutes per yellow card received during the week).

If you end your day on a 'Red Card':

- 1) you will carry out 'reflection time' with a member of the leadership team at the end of the day
- 2) your parents/carers will be contacted
- 3) you will miss 10 minutes of your 'Good to be Green' time. (You will miss 10 minutes per red card received during the week).

### Consequence Card

## NON NEGOTIABLES

You will automatically receive a PURPLE CARD for:

- Deliberate physical contact (including retaliation)
- Swearing
- Racism
- Stealing
- Refusal to complete work



If you receive a purple card:

- 1) you will carry out 'reflection time' with a member of the leadership team at the end of the day
- 2) your parents/carers will be contacted
- 3) you will miss all of your 'Good to be Green' time.

## Other Year Group Specific Information:

- RWI – children will be following the phonics program Read Write Inc every morning.
- Phonics check – during the Summer Term, children will complete a statutory phonics screening check – more information will be provided for you regarding this phonics screening check during the Spring Term.

We are very much looking forward to welcoming the children into Year 1 and introducing our new topic to them. As always, if you have any questions or concerns please do not hesitate to contact us. We will be more than happy to help.

The Year 1 Team.