

Reception – Autumn Term– 2021 – 2022

This grid outlines the knowledge and skills that Reception children will gain throughout this term's topic.

As readers we will:

- Read individual letters by saying the sounds for them.
- Blend sounds into words, to read short words made up of sounds I know.
- Understand 'Fred' talk to blend words together.
- Look at a range of fiction and non fiction books.
- Learn to read 'tricky red' words by sight.



As mathematicians we will:

- Count to 10.
- Touch count objects up to 10.
- Use objects to make different groups of numbers to 10. (2 and 8, 6 and 4)
- Know the name and properties of a circle, square, rectangle and triangle.
- Continue, copy and create repeating patterns.



As writers we will:

- Form recognisable letters.
- Write our name independently.
- Spell words by writing the sounds we hear.
- Start to write a simple sentence with support.



As investigators we will:

- Talk about and describe members of our family.
- Understand that some places are special to people in the community and that people have different beliefs.
- Describe what we see, feel, hear and smell outside.



As individuals we will:

- Be able to control our feelings socially and emotionally.
- Show resilience and perseverance in the face of a challenge.
- Express feelings and respect the feelings of others.
- Build constructive and respectful relationships.



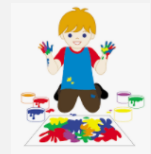
As movers we will:

- Develop fine motor skills to use a range of tools, including a pencil for writing.
- Know and talk about our well-being and how we stay healthy.
- Develop a well formed handwriting style.
- Combine different movements with ease and style.



As creators we will:

- Express feelings through dance and singing.
- Use artistic effects to express feelings and thoughts.
- Develop story lines in play.
- Explore different musical instruments.



As talkers we will:

- Connect our ideas or actions to another using a range of connectives. (and, because, so, but)
- Describe an event in detail.
- Put our ideas and thoughts into well-formed sentences.
- Answer a question in a sentence.



At Perry Hall:

As part of our Social, Moral, Spiritual and Cultural curriculum we will continue to interweave our school motto and core values into everything we do.

Motto:

Perry Hall Primary, a place to grow in confidence, creativity and ability.

At Perry Hall we are:

Respectful, Caring, Determined – never give up, Enthusiastic, Independent and Motivated.



Breakfast Club and Afterschool Club:

Reception: If you wish to book your child into breakfast or afterschool club or need to make contact with the staff, please use:



phbreakfast-asc@perryhallmat.co.uk

Medical:

For any pupil medical related issues that you need to inform us about, please contact the appropriate staff using:

phmedical@perryhallmat.co.uk



Year Group Specific Information:

Baseline check – During your child's first weeks they will take part in the authority baseline tests. This will be 1:1 work with your child. It provides a snapshot of where pupils are when they arrive in school, providing a starting point to measure progress. This allows for teachers to plan individual next steps in your child's learning journey.

Phonics – Your child will complete daily phonics lessons, using the Read, Write Inc. programme. Phonics teaches children to read accurately and fluently with good comprehension. They will learn to form each letter, spell correctly and compose their ideas step by step.

Please ensure all uniform and water bottles are labelled so any items which might be misplaced, can be returned promptly.

Children in Reception explore the outdoors every day. Please ensure that they are dressed appropriately for the weather and ensure that all coats, hats, wellies, scarves etc are labelled.

We are looking forward to getting to know your children as they enter Reception. Please feel free to ask us any questions that you may have and we will be more than happy to help.

The Reception Team.

School Uniform:

Children **must wear full, winter uniform**. Uniform plays a valuable role in contributing to our school ethos and helps to set an appropriate tone. We thank you in advance for supporting us in upholding our standards.

Girls:

- **white polo shirt/blouse and grey skirt / pinafore / trousers with a green cardigan.**
- **plain black, low heeled shoes.**

Boys:

- **grey trousers and white shirt with a school tie/polo shirt with a green jumper**
- **plain black school shoes (no trainers/pumps).**

Uniform can be purchased from Kids Corner.

PE days & Uniform Reminder:

This term, your child's PE day is for **REP on a Wednesday and for RCR a Thursday**.

On these days, please send your child into school wearing their PE kit.

A reminder, PE kit entails:

- plain white t-shirt
- plain black jogging bottoms/shorts
- plain black zip up/jumper
- trainers.

Year Group Email Address:

Reminder, your child's year group email address is:

ph.receptionhomelearning@perryhallmat.co.uk

Please use this, if you need to make contact with your child's year group staff.



Homework:

Reception Homework	What is required?	Given out?	Due back in?	Where will I find this?	Do I need a login?
Reading: School reading book (weekly)	Reading books will be sent home each Thursday and will need to be returned into school the following Monday .	Thursday	Monday	Sent home with your child.	No.
High Frequency Words	High frequency words will be sent out to learn weekly with the Reading books each Thursday and checked each Monday .	Thursday	Monday	Sent home with your child.	No
RWI (weekly)	A weekly link will be sent home for the video of the sounds your child is learning in school. A link will also be sent for their RWI e-book if relevant.	Friday	Thursday	Text	No
Topic Grid (termly)	A range of engaging tasks related to your child's termly topic and covering all curriculum areas, will be set each term. Children are to work through these tasks and send evidence of their complete outcomes to their year group email address.	Towards the start of the term	Throughout the term	Homework folder	No