

# WELCOME TO Year 6



Part of Perry Hall Multi-Academy Trust  
Together We Succeed



# Schools Within Perry Hall Multi-Academy Trust (MAT)



The Trust was established in 2013.

At present, we have seven schools within our trust:



We are a Primary-only Trust and believe in  
giving all of our children a first class  
education.

# MAT Leadership Team



**Mrs AK Cheema**  
**OBE**  
CEO of the Trust



**Mr D Asbury**  
Executive Headteacher  
for the Trust



**Miss R Kohli**  
Executive Headteacher  
for the Trust



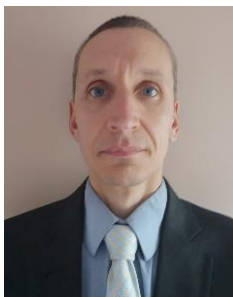
# School Leadership Team



**Miss R Kohli**  
Executive Headteacher  
of Perry Hall



**Mrs C Gibbins**  
Head of School  
Y6 Lead  
Maths Lead



**Mr D Tarbuck**  
Chair of Governors



**Mrs M Dodd**  
Assistant Head  
EYFS and KS1  
Phase Leadership



**Mrs N Heer**  
Safeguarding  
and Inclusion



**Mrs C Russell**  
SENCO  
Inclusion  
Reception teacher



**Mr C Fergusson**  
Y3-5 Phase Leadership  
Pupil Premium Champion  
Year 4 teacher



**Mrs L McLean**  
English Lead  
Year 6 teacher

# Safeguarding Team



A Place to Grow



**Miss R Kohli**  
Executive Head  
Teacher



**Mrs C Gibbins**  
Head of School  
Y6 Lead  
Maths Lead



**Mrs N Heer**  
Safeguarding  
and Inclusion



**Mrs M Dodd**  
Assistant Head  
EYFS and KS1  
Phase Leadership



**Mrs C Russell**  
SENCO  
Inclusion  
Reception teacher



**Mr C Fergusson**  
Y3-5 Phase Leadership  
Pupil Premium Champion  
Year 4 teacher



**Mrs L McLean**  
English Lead  
Year 6 teacher

**Our Trust Safeguarding Policy can be found on the school website:**

<https://www.perryhall.co.uk/>

**If you have any concerns about the welfare of your child, please come and talk to us.**

# Inclusion Team



A Place to Grow



**Miss R Kohli**  
Executive Head  
Teacher



**Mrs C Gibbins**  
Head of School



**Miss A Meredith**  
Assistant Educational  
Psychologist



**Mrs C Russell**  
SENCO and  
Inclusion



**Mrs N Heer**  
Safeguarding  
and Inclusion

**Our Special Educational Needs policy and SEND Information  
Report can be found on the school website:**

<https://www.perryhall.co.uk/>

**The school follows the Local Authority recommended guidelines.**

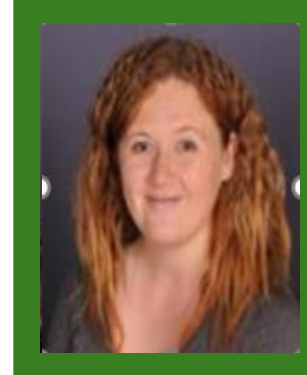
# The Year 6 Team



**Mrs Holdcroft**  
6MH Class Teacher



**Mrs Middlebrook**  
6MH Class Teacher



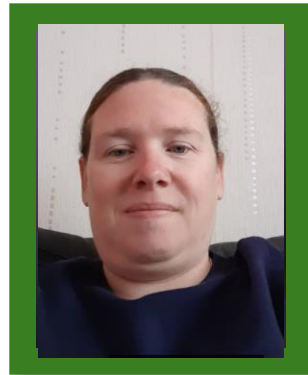
**Mrs McLean**  
6LM Class Teacher



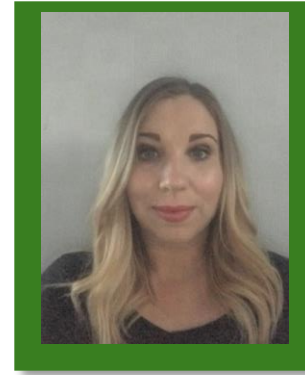
**Mrs Sanders**  
6JS Class Teacher



**Mrs Nelson**  
Teaching Assistant



**Mrs Ferguson**  
One-to-one support



**Mrs Gardner**  
One-to-one support



**Miss Withington**  
One-to-one support



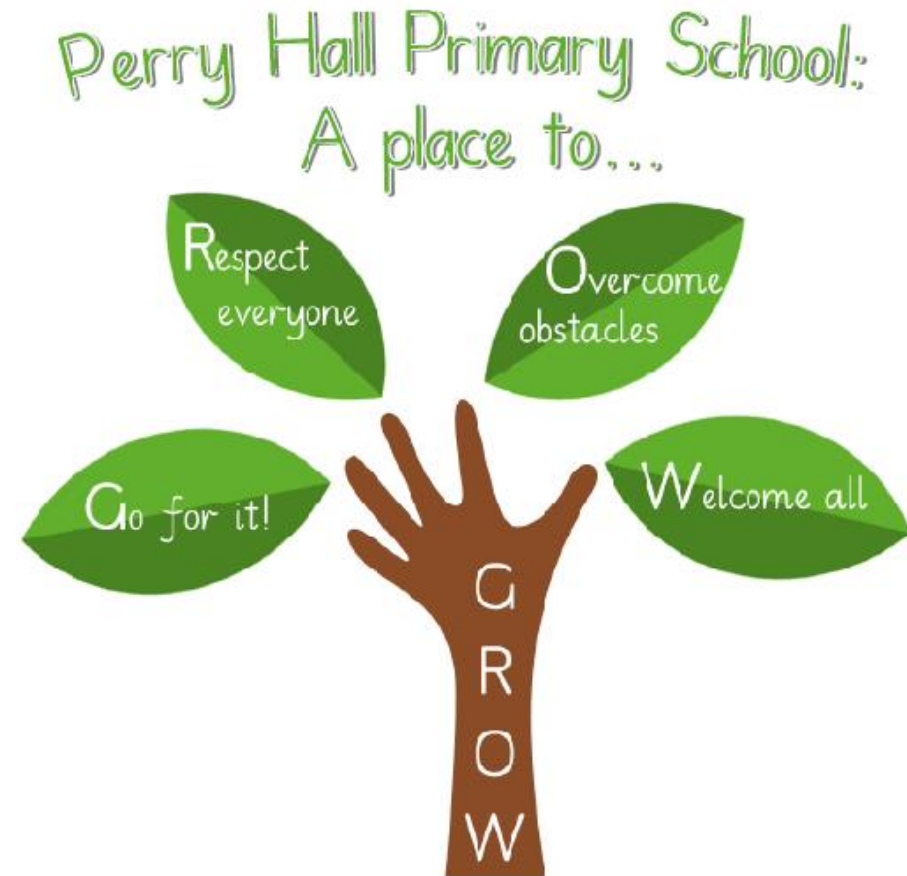
# School Motto and Core Values



**School Motto:** Perry Hall Primary, a place to grow in confidence, creativity and ability.

**At Perry Hall we are:**

- **Respectful**
- **Caring**
- **Determined** – never give up
- **Enthusiastic**
- **Independent**
- **Motivated.**





# The Curriculum



Parents and carers will receive a termly topic grid at the beginning of each term, which will outline the foci for the skills and knowledge related to the teaching and learning. These will also be uploaded onto our school website.

The topics for next year will be:

Autumn	Spring	Summer
World War Two	Survival of the Fittest	Transition

- Staff work as a year group team- they plan together and the whole team are aware of all of the children's needs.
- Whole school long term plans can be found on our school website.
- All school visits are planned with these topics in mind to help facilitate learning, trips will need to be paid for in full before the visit takes place. Visits will unfortunately be cancelled if insufficient funds are collected.
- Clubs, after school, will be available throughout the year for children to attend. Letters will be sent out each term to confirm what clubs will be on offer.

# Setting and Groupings- Y6

## Maths

This year, we will be working in ability groups for Mathematics. The children will be split into 4 groups, which will be consistently taught by the same members of staff.

## English

Similar to Mathematics, English will be taught in 4 groups but these will be mixed ability. Each set will deliver the same planning to ensure consistency across the year group.

## Science and non-core subjects

During topic this year, children will be taught in mixed ability groups each afternoon. Additional support will be given in smaller groups should this be required.

There may be times when your child will receive additional support to enhance their learning – interventions take place for all abilities; every effort is made to ensure that children do not miss out on any parts of the curriculum. These interventions may also take place before and after school.



# Assessment

Throughout the year, we will be assess your child's progress to ensure that they are working to their best possible potential.

It is expected that your child will be working securely within their age-related band by the end of the year (see yellow highlighting).

## National, statutory assessments

- **Year 1** will take part in national, statutory phonics testing in June.
- **Year 6** will sit the national, statutory Key Stage 2 SATs in May.
- **Year 4** will carry out the national, statutory Multiplication Tables Check in June.

Stages of Progression	Age-related Expectation by the end of the year
Stage 1 Entering	
Stage 1 Developing	
Stage 1 Secure	Year 1
Stage 2 Entering	
Stage 2 Developing	
Stage 2 Secure	Year 2
Stage 3 Entering	
Stage 3 Developing	
Stage 3 Secure	Year 3
Stage 4 Entering	
Stage 4 Developing	
Stage 4 Secure	Year 4
Stage 5 Entering	
Stage 5 Developing	
Stage 5 Secure	Year 5
Stage 6 Entering	
Stage 6 Developing	
Stage 6 Secure	Year 6





# Perry Hall's Summer Reading Challenge

Over the summer holiday, your child has the opportunity to complete our Perry Hall Reading Challenge.

We are challenging the children to read 10 books that capture their interest.

Your child will be sent home with a reading record that they can use to track how many books they have read.

When they give this booklet back to their class teacher in September, they will be awarded with a certificate of achievement for their brilliant effort.



Name of the Book	What did you think? Circle the emoji that best represents how you feel	Would you recommend it?
	😊 😊 😊	
	😊 😊 😊	
	😊 😊 😊	
	😊 😊 😊	
	😊 😊 😊	

As well as reading library books, or books you may already have at home, your child will still have access to their MYON account through the summer.

This can be accessed at:

<https://www.myon.co.uk/login/index.html>

A screenshot of a web page titled 'Test My online bookmark'. It shows a login form with fields for 'User name' and 'Password'. Below the form, there is a red box containing the text 'myON by Renaissance' and 'User name: Test Password: ABC'.

# Perry Hall's Summer Maths Times Tables Challenge (Year 1 – Year 6)



Multiplication has a tremendous impact on all areas of maths; it is important that your child regularly practices their times tables at home to develop this skill. Children can learn their multiplications in many different ways and what works for one child, may not work for yours. We encourage parents to try a variety of methods including: rote, games and singing. Please practise and ensure that y

Expectations for times tables for each year group	
Year 1	Count in multiples of 2, 5 and 10. Recall and use all doubles to 10 and corresponding halves.
Year 2	Recall and use multiplication and division facts for the 2, 5 and 10 times tables including recognising odd and even numbers.
Year 3	Recall and use multiplication and division facts for the 3, 4 and 8 times tables.
Year 4	Recall and use multiplication and division facts for tables up to $12 \times 12$
Year 5	Revision of all times tables and division facts up to $12 \times 12$
Year 6	Revision of all times tables and division facts up to $12 \times 12$



As a school, we offer the use of Times Tables Rock Stars. All pupils in Year 2-6 have a login and can access this to help them practice

# Transition Activities (set by your child's new year group staff)



## Transition T-Shirt

All of the Year 6 teachers are really looking forward to getting to know you. Before you come back in September, have a go at designing your own Transition T-Shirt on paper with information about yourselves.



## Year 6



2021/2022

## Holiday Transition Activities

Please email us with any completed tasks by Monday 6th September 2021

[ph.y6homelearning@perryhallmat.co.uk](mailto:ph.y6homelearning@perryhallmat.co.uk)

Emails can be sent in anytime from Friday 23<sup>rd</sup> July and will be responded to when school reopens in September.

## Year 6 Roles and Responsibilities

In September, we will be asking people to apply for the following roles:

- Prefect
- School Council
- Eco Warrior
- Play Pals

Over the summer, you can begin to think about why you may want to apply for these jobs and what would make you suitable for the role.

Have a go at writing a short application for one of these roles

Please email your new year group email address with any completed tasks by Monday 6th September 2021.

[ph.y6homelearning@perryhallmat.co.uk](mailto:ph.y6homelearning@perryhallmat.co.uk)

## Personality Cloud

Pick 6 adjectives that best describe your personality and add them to your cloud.



## Survival

Our main topic in Year 6 is SURVIVAL. What does this mean to you?

You can either:

- Draw a model
- Create a mood board
- Write a presentation
- Compose a song or rap

Be prepared to share these with your peers in September.

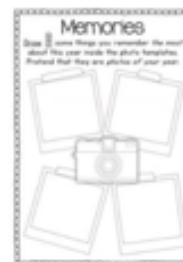
## The Summer Reading Challenge

This summer, challenge yourself to read 10 books that grab your attention! Bring back your completed reading record in September to earn your certificate!

Our first class text is going to be *Letters from the Lighthouse* written by Emma Carroll. You might want to have a sneak peak!

## Memories

Draw 4 photos to capture your favourite memories of things you have done since you were last in school.





# Lunchtimes



Our Lunchtime Team				
Mrs H Moore – Infant Senior supervisor			Mrs T Richards - Junior Senior supervisor	
Mrs. Guy	Miss Fereday	Miss Walker	Mrs Toft	Mrs Taylor
Mrs Thompson		Mrs Monk	Miss Poutney	Mrs Guy
Plus:				
Mr. Boneham		Mrs Withington	A member of the leadership team	
Mr. Boneham, our sports coach, and a member of the Senior Leadership Team are always on duty at lunchtimes and available for all children.				
The activities available include the Play Pod, sports equipment, sports activities led by the sports coach, plus free play.				



# Healthy Eating

The Government states: Food served/consumed in schools and academies in England must meet the school food standards so that children have healthy, balanced diets.

The food standards states the following (*which applies across the whole school day*):

## Food:

- No confectionery, chocolate and chocolate-coated products. Desserts, cakes and biscuits are allowed at lunchtime. They must not contain any confectionery.
- No more than two portions a week of food that has been deep-fried, batter-coated or breadcrumb-coated

## Drinks:






- Plain water (still or carbonated)
- Lower fat milk or lactose reduced milk
- Fruit or vegetable juice
- Plain soya, rice, oat drinks or yoghurt drinks.

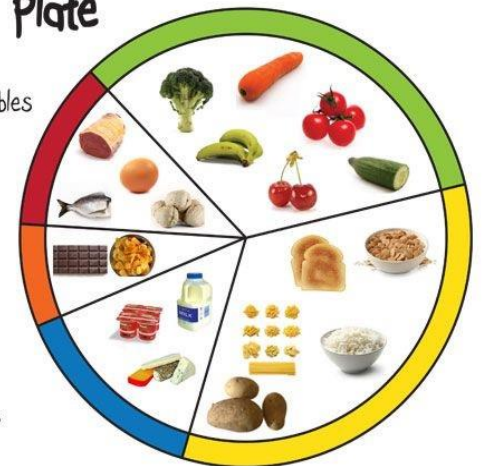


A Place to Grow



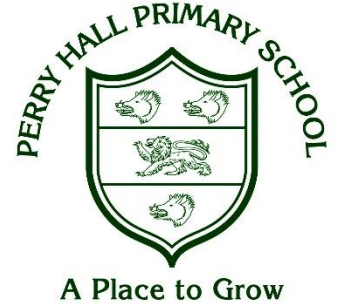
## A Balanced plate

-  Fruit and vegetables
-  Grains, cereals and potatoes
-  Dairy products
-  Meat, fish, nuts and eggs
-  Fats and sugars



Perry Hall is a no nut school, please do not send in anything containing nuts.

# Free School Meals



If you think your child may be entitled to either free school please contact the school office or Wolverhampton City Council for further details.

- Although all KS1 children are entitled to universal free school meals, ***it is important that you continue to claim for free school meals.***
- Further information can be obtained from the school office or online at <http://www.wolverhampton.gov.uk/freeschoolmeals>





# Our 'Open-door' Policy and Communication with School



If you have any concerns or worries, please contact the school office by telephone to arrange a suitable appointment time to come and see us.

- **Please inform us immediately if there are any changes to your child's:**
  - Contact details
  - Medical information
  - The named person for collecting your child.
- **Please note- when collecting your child, all adults collecting (including the main carer) must know your child's password and also have photo ID with them. Your child will not be released without this. If someone different is collecting, please ensure the school is informed before 2.45pm.**
- Please bare with us while our staff familiarise themselves with you during the first few weeks of the academic year. If ID is asked for, please understand this is to ensure the safety of your child.



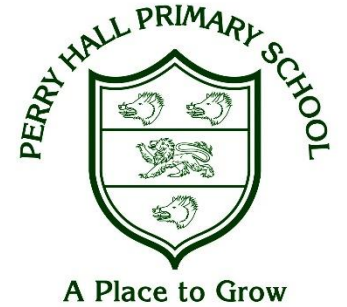
**Can we take this opportunity to express from our Board of Governors and Trustees that we do not accept or tolerate any form of abuse from any member of the public. If this occurs, you will be asked to leave the premises.**

Parent/Visitor Conduct On Site

Parents / visitors are expected to treat all staff and children in a respectful way when on our school site. Any threatening, abusive or violent behaviour against any staff member or child is taken extremely seriously. Examples of such behaviour are below:

- raised voices
- shouting at staff
- swearing
- intimidating staff
- rallying other parents to become involved in intimidating behaviour
- publically voicing unsubstantiated claims about staff, children or the Academy.
- using racist or sexist terms
- using violence
- taking alcohol or drugs on the premises
- willful damage to school property
- theft
- threats or threatening behaviour
- altercations (verbal or physical towards other parents whilst on the school site)

This list is not an exhaustive list but seeks to provide illustrations of such behaviour that is not acceptable in our school. Anyone behaving in this way will be asked to leave the premises and the police will be called if verbal or physical harassment occurs. If necessary, action will be taken to ban anyone behaving in such a way from the school grounds.



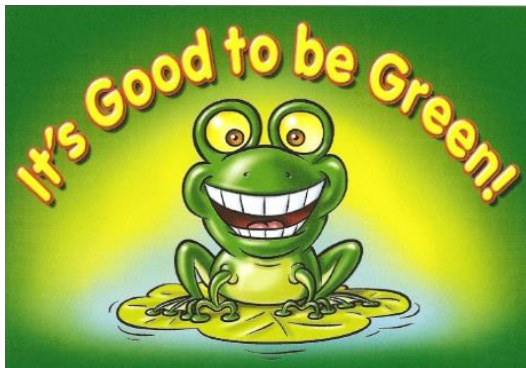
**PLEASE NOTE**  
**WE WILL NOT**  
**TOLERATE ABUSE**  
**TOWARDS OUR STAFF**

# School Behaviour Policy



We aim to foster an environment which is rich in learning, based upon the diversity of the school. The expectations for behaviour should reflect this, inclusive of the children, parents, staff and the wider community. The Governing Body and the staff accept this principle and seek to create an environment which encourages and reinforces good behaviour.

## Our school's 'Good to be Green' scheme...



We strive to adopt a fair approach to behaviour management within our classrooms, offering a range of motivational rewards to help keep positive behaviour on track through the use of our Good to be Green scheme.

We are currently making a transition between our adapted Covid friendly Good to be Green system and our original system. You will receive further information regarding this closer to child's return to school in September.



# Rules Around School



## Class Rules

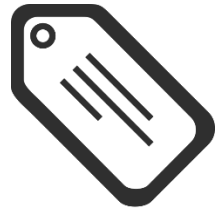
- Classroom rules will be created with the children in September.

## Playground Rules

- To use positive language
- To play well with others
- To respect the adults who look after us
- To stand still and quiet when the bell/whistle goes
- To place all litter in the bins provided.



Label everything please!



# School Uniform

WINTER UNIFORM



A Place to Grow

## Boys

- Sweatshirt – dark green
- Shirt – white
- Tie – dark green with yellow stripe, with or without elastic
- Trousers – grey
- Shoes – black.

## Girls

- Blouse – white
- Cardigan – dark green
- Pinafore – grey
- Skirt – grey
- Dress – green with white check
- Socks – white
- Shoes – flat, black.

## Footwear

It is essential that children wear suitable footwear for school that allows their feet adequate room and gives proper support and ventilation. For this reason, please do not send children to school wearing fashion shoes or trainers.

## Jewellery

In order to ensure adequate safety standards, particularly in organised games and physical education, children should not wear jewellery, especially earrings while at school. Studs are allowed, but must be removed or covered over for PE and games.

## Summer Options

All pupils – white polo shirts

Girls have the option to wear a green and white checked dress

Boys have the option to wear grey shorts.

## *Where to buy?*

*All items can be purchased from Kids Corner, located on Showell Circus, Low Hill, Wolverhampton.*

# PE Kit

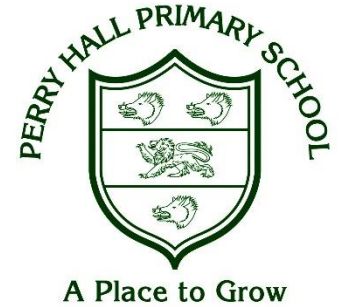
## Our school PE kit for this year includes:

- Plain white T-shirt
- Plain black jogging bottoms (option for plain black shorts in the summer)
- Plain black jumper or zip up.
- Trainers.

We will continue to ask children to **come to school wearing the above PE kit on their PE days**. *You will be informed of your child's PE day as soon as timetables have been confirmed (closer to children's return in September).*

For health and safety reasons, please remove all jewellery and ensure long hair is tied back. If children wear earrings they **MUST** bring in their own plasters, to cover these during P.E. and any after-school sports.

It is very important that your child is in the correct PE kit and footwear for their lesson.



# Homework



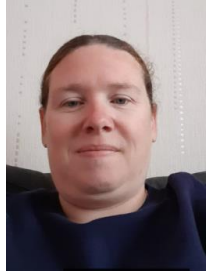
Perry Hall issues weekly homework to all children across school in Reception to Year 6.

The homework that we issue will either help children to prepare for lessons that are to come or to consolidate the knowledge and skills that your child will have gained in school.

We are in the process of reviewing the homework that each year group will receive next academic year. You will be informed of our confirmed plans when children return to school in September.







# Breakfast Club



At Perry Hall 'Kids Club' we offer both breakfast and after school facilities for children in Nursery up to year 6.

Breakfast club runs between 7.45am until 8.30am and we offer a variety of breakfast choices.

Breakfast club £4.00

Contact Details for Perry Hall Kids Club are:  
Mrs Ferguson (breakfast club lead) 01902 558538  
Email address [phbreakfast-asc@perryhallmat.co.uk](mailto:phbreakfast-asc@perryhallmat.co.uk)





# After School Club



After school club runs Monday – Thursday.

*Please note, we do not offer an after school club on a Friday.*

After school club is split into two sessions. The early session runs between 3.15pm and 4.15pm and the late session is between 3.15pm until 5.55pm.

During after school club, the children are offered a range of snacks. We offer a range of fun activities for all ages including arts and crafts, games and outdoor sports.

Please see cost information below:

After-school early session £4.00. After-school late session £6.50.

Contact Details for Perry Hall Kids Club are:

Miss Parkinson (after-school club lead) 01902 558538

Email address [phbreakfast-asc@perryhallmat.co.uk](mailto:phbreakfast-asc@perryhallmat.co.uk)



# Attendance

## Absence and Illness

- If your child is ill whilst at school, we will ring you to collect your child. Please ensure we have current contact details.
- Please call the school office if you know your child will be absent and please ring each following day of the absence.
- Children will go straight to the classroom on arrival. Please make sure your child is on time as lessons start promptly.
- If your child is not collected by the allocated time, you will be called.



# Term-time holidays

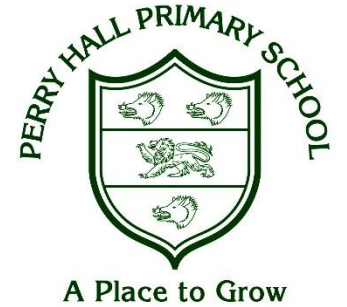
- The school **does not** authorise term-time holidays. However, if you require a leave of absence due to exceptional circumstances please complete the relevant documents.
- If you choose to take your child out of school on holiday during term time, this will be classed as an unauthorised absence.
- If you take your child/ren out on holiday during term time, a penalty notice of £60 could be imposed per child and per parent. This will be issued by the local authority. For further information please contact the school office.





# Attendance and Punctuality

If your child arrives at school after the bell and the gate has been closed they will receive a late mark.



## If absent:

If attendance is under 95% a letter will be sent from school to Parents/Carers



Parents/Carers must contact school every day of absence



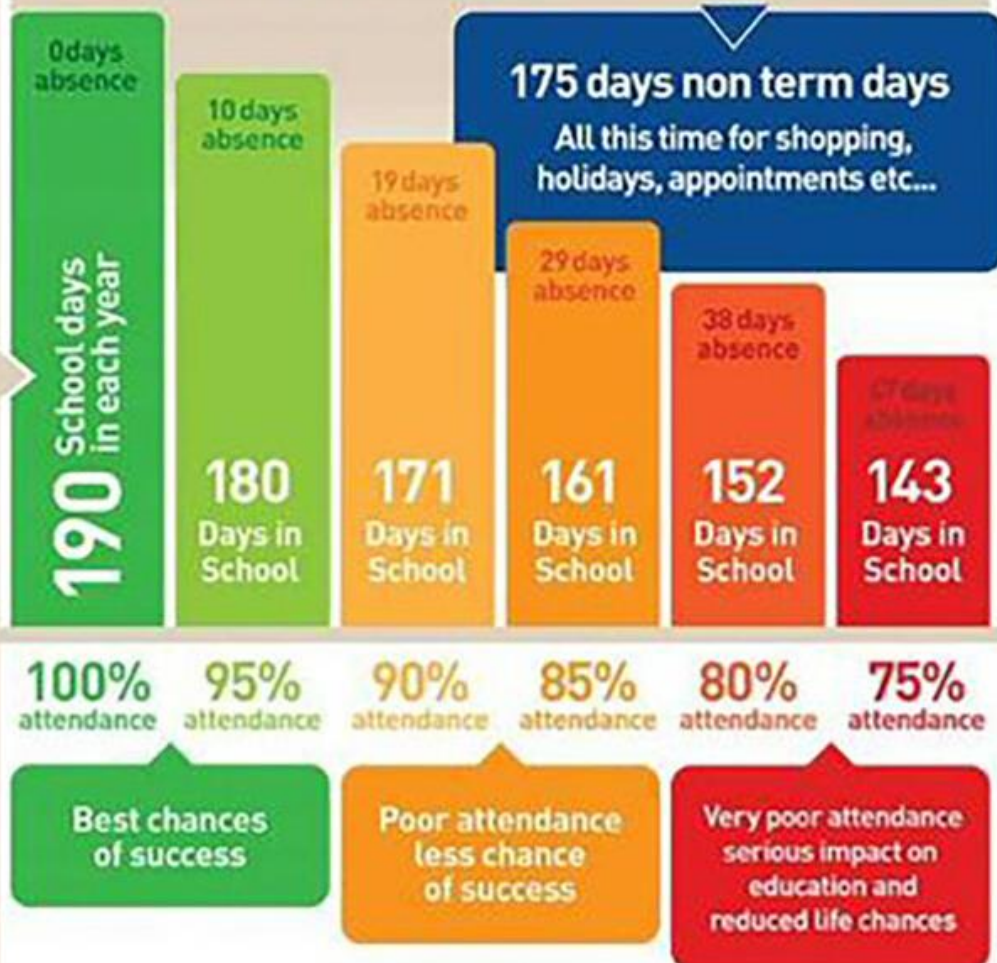
Parents/Carers must provide medical evidence for all absences



- For example, GP appointment card/medication/medication packaging/prescriptions/hospital and appointment letters/

365 days in a calendar year

*Good attendance means being in school at least 95% of the time (180 to 190 days)*



**DID YOU KNOW?** A two week holiday in term time means that the highest attendance you can achieve is **94.7%**

*...being in school, on time, every day, ready to learn.*



**DID YOU KNOW?** If you are 15 minutes late each day you will have missed a full 2 weeks of school in one year?



# Term Dates 2021-2022

(Awaiting Trust Board Approval July 2021)



A Place to Grow

## Autumn Term 2021

- Term Time: Monday 6 September 2021 to Friday 22 October 2021
  - Half term: Monday 25 October 2021 to Friday 29 October 2021
- Term Time: Tuesday 2 November 2021 to Friday 17 December 2021

## Spring Term 2022

- Term Time: Wednesday 5 January 2022 to Friday 18 February 2022
  - Half term: Monday 21 February 2022 to Friday 25 February 2022
- Term Time: Monday 28 February 2022 to Friday 8 April 2022

## Summer Term 2022

- Term Time: Monday 25 April 2022 to Friday 27 May 2022
  - Half term: Monday 30 May 2022 to Friday 3 June 2022
- Term Time: Monday 6 June 2022 to Thursday 21 July 2022

## Inset Days:

- Thursday 2nd September 2021
  - Friday 3rd September 2021
  - Monday 1st November 2021
  - Tuesday 4th January 2022
  - Friday 22nd July 2022



# Important Information



- If your child needs medication, please complete the appropriate form available from the school office.
- All medication must be recently prescribed, clearly labelled and sent into school via the office.
- If your child has an inhaler please ensure a health care plan is completed via the office, it is clearly labelled and sent into school via the office.
- Please do not send any type of hand sanitiser gels into school.
- If you would like to discuss your child's medical needs please email the school on the following email address: [phmedical@perryhallmat.co.uk](mailto:phmedical@perryhallmat.co.uk)

*Please ensure you inform us of any changes.*



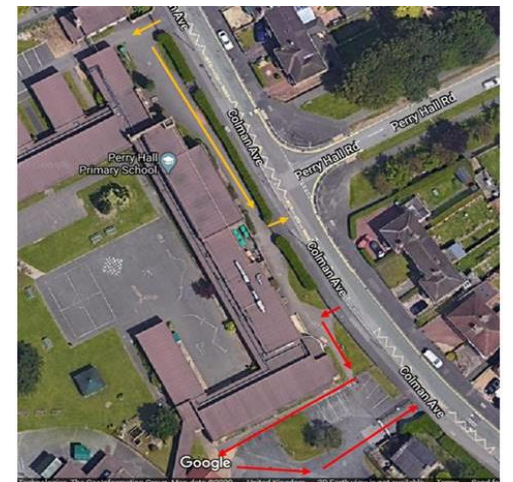


# Covid-19 Safety Measures

In order to meet our current Covid-19 risk assessments and to maintain the safety of our children, parents and staff, we have the following things in place:

- a one way system when dropping off and collecting children.
- staggered start and end times to the school day.
- an expectation that everyone who can, should wear a face covering when on school site.
- parents to not enter the school building, unless in exceptional circumstances.

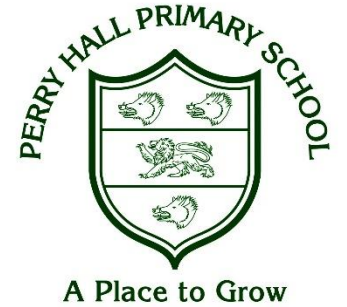
*Over the summer holidays, we will amend our risk assessments in line with updated government guidance and will inform you of our plans for September nearer to when children return to school.*



# Any Questions?

For further information please visit our school website

<https://www.perryhall.co.uk/>



If you have any questions, please contact the school office  
on 01902 921159 during term time;  
Mrs Cox & Mrs Wootton will be happy to assist you.



Please note, this is a new phone number that will be in use from 15.07.21.

# THANK YOU



## Address

Perry Hall Primary School  
Colman Avenue  
Wednesfield  
Wolverhampton  
WV11 3RT

## Call

01902 921159

## Email

[perryhall.groupemail@wolverhampton.gov.uk](mailto:perryhall.groupemail@wolverhampton.gov.uk)

## Visit

[www.perryhall.co.uk](http://www.perryhall.co.uk)



Together We Succeed