

WELCOME TO Reception



Part of Perry Hall Multi-Academy Trust
Together We Succeed



Schools Within Perry Hall Multi-Academy Trust (MAT)



The Trust was established in 2013.

At present, we have seven schools within our trust:



We are a Primary-only Trust and believe in giving all of our children a first class education.

MAT Leadership Team



Mrs AK Cheema
OBE
CEO of the Trust



Mr D Asbury
Executive Headteacher
for the Trust



Miss R Kohli
Executive Headteacher
for the Trust

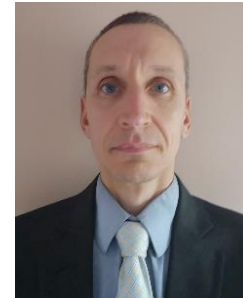
School Leadership Team



Miss R Kohli
Executive Headteacher
of Perry Hall



Mrs C Gibbins
Head of School
Y6 Lead
Maths Lead



Mr D Tarbuck
Chair of Governors



Mrs M Dodd
Assistant Head
EYFS and KS1
Phase Leadership



Mrs N Heer
Safeguarding
and Inclusion



Mrs C Russell
SENCO
Inclusion
Reception teacher



Mr C Fergusson
Y3-5 Phase Leadership
Pupil Premium Champion
Year 4 teacher



Mrs L McLean
English Lead
Year 6 teacher

Safeguarding Team



A Place to Grow



Miss R Kohli
Executive Head
Teacher



Mrs C Gibbins
Head of School
Y6 Lead
Maths Lead



Mrs N Heer
Safeguarding
and Inclusion



Mrs M Dodd
Assistant Head
EYFS and KS1
Phase Leadership



Mrs C Russell
SENCO
Inclusion
Reception teacher



Mr C Fergusson
Y3-5 Phase Leadership
Pupil Premium Champion
Year 4 teacher



Mrs L McLean
English Lead
Year 6 teacher

Our Trust Safeguarding Policy can be found on the school website:

<https://www.perryhall.co.uk/>

If you have any concerns about the welfare of your child, please come and talk to us.

Inclusion Team



A Place to Grow



Miss R Kohli
Executive Head
Teacher



Mrs C Gibbins
Head of School



Miss A Meredith
Assistant Educational
Psychologist



Mrs C Russell
SENCO and
Inclusion



Mrs N Heer
Safeguarding
and Inclusion

Our Special Educational Needs policy and SEND Information Report can be found on the school website:

<https://www.perryhall.co.uk/>

The school follows the Local Authority recommended guidelines.

Reception Team



Mrs C Russell
RCR Class Teacher



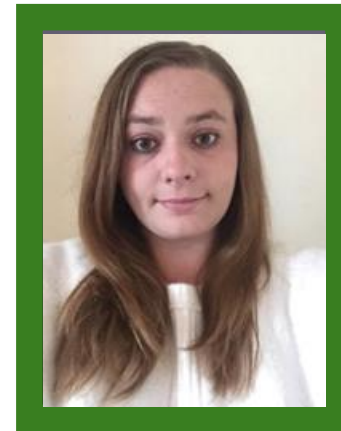
Mrs E Phillips
REP Class Teacher



Miss Stanyer
Support teacher



Mrs Williams
Teaching Assistant



Mrs G Ballinger
One-to-one support



Mrs R Saunders
Higher Level Teaching
Assistant

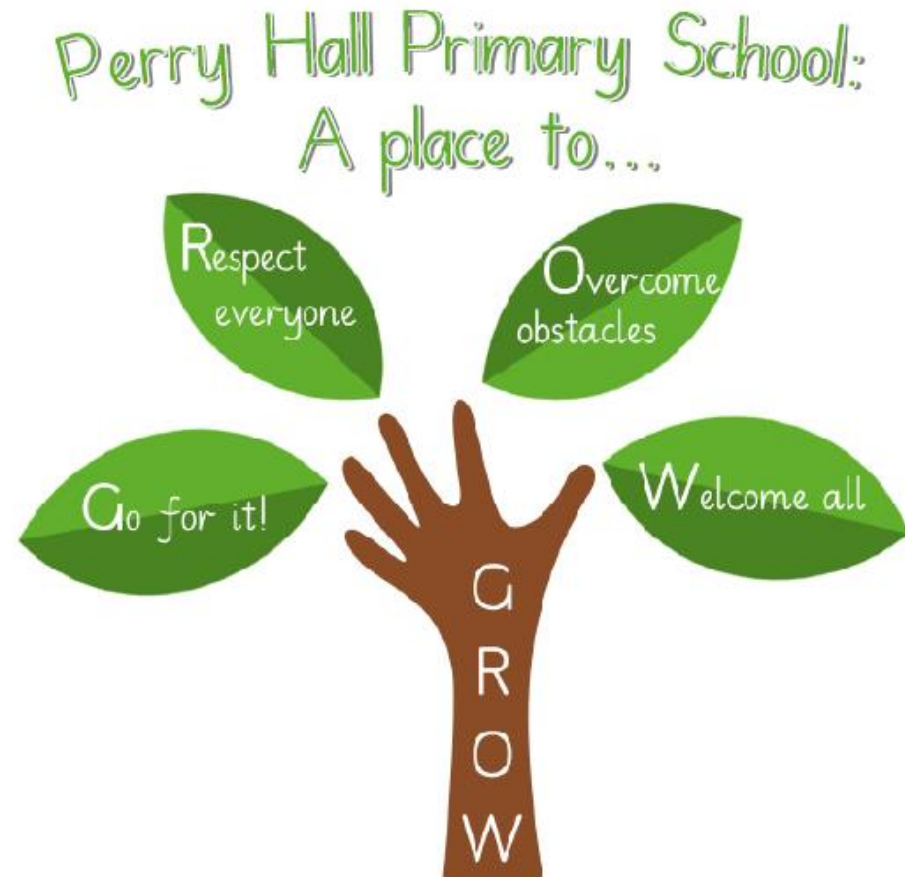
School Motto and Core Values



School Motto: Perry Hall Primary, a place to grow in confidence, creativity and ability.

At Perry Hall we are:

- **Respectful**
- **Caring**
- **Determined – never give up**
- **Enthusiastic**
- **Independent**
- **Motivated.**



The Curriculum



Parents and carers will receive a termly topic grid at the beginning of each term, which will outline the foci for the skills and knowledge related to the teaching and learning. These will also be uploaded onto our school website.

The topics for next year will be:

Autumn	Spring	Summer
I am Special!	Wild Things!	New Beginnings!

- Staff work as a year group team- they plan together and the whole team are aware of all of the children's needs.
- Whole school long term plans can be found on our school website.
- All school visits are planned with these topics in mind to help facilitate learning, trips will need to be paid for in full before the visit takes place. Visits will unfortunately be cancelled if insufficient funds are collected.
- Clubs, after school, will be available throughout the year for children to attend. Letters will be sent out each term to confirm what clubs will be on offer.

Our Early Years Vision

In the Early Years Foundation Stage at Perry Hall Primary School, we provide **an enabling environment which promotes the learning and development of every child attending our setting.**

Our EYFS curriculum is designed to **allow children to develop the knowledge and life skills that they need to succeed in life.** Children's learning is led through a balance of discrete, adult-led sessions and carefully planned continuous provision where children have the opportunity to investigate and apply their learning using our stimulating indoor and outdoor environments.

As a team, we feel it is of upmost importance to get to know children and their families as well as possible. We succeed in this through building effective partnerships with parents and carers to ensure the best possible start to school life for our children.



A Place to Grow



What is the Early Years Foundation Stage?



A Place to Grow

The Foundation Stage for children covers seven areas of learning
– all areas of learning and development are important and inter-connected.

Prime Areas

- **Personal, Social and Emotional Development**

- Building Relationships
- Managing Self
- Self-regulation

- **Communication and Language**

- Listening, Attention and Understanding
- Speaking

- **Physical Development**

- Gross Motor Skill
- Fine Motor Skills

These three areas are particularly crucial for igniting children's curiosity and enthusiasm for learning, and for building their capacity to learn, form relationships and thrive.

They lay the foundations for children's success in all other areas of learning and of life.

What is the Early Years Foundation Stage?

The Foundation Stage for children covers seven areas of learning
– all areas of learning and development are important and inter-connected.



A Place to Grow

• Literacy

- Comprehension
- Word reading
- Writing

• Understanding the World

- Past and Present
- People, culture and Communities
- The Natural World

Specific Areas

• Maths

- Number
- Numerical Patterns

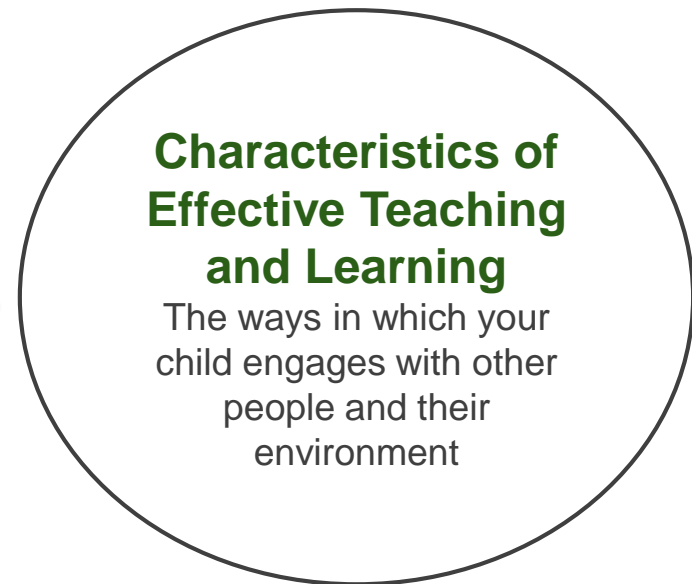
• Expressive Art and Design

- Creating with Materials
- Being Imaginative and Expressive

All children work towards 17 statements.



**Playing and Exploring
(Engagement)**
Finding out and exploring
Playing with what they know
Being willing to have a go

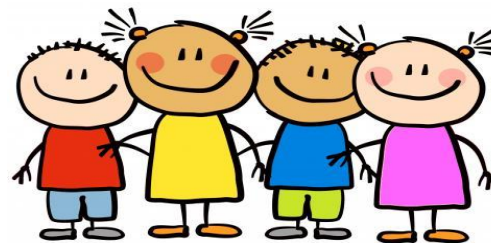


**Characteristics of
Effective Teaching
and Learning**

The ways in which your
child engages with other
people and their
environment

**Active Learning
(Motivation)**
Being Involved and Concentrating
Keep on trying
Enjoy achieving what they set out to do

**Creating and Thinking Critically
(Thinking)**
Having their own ideas
Choosing ways to do things
Making links



Our Learning Environment



A Place to Grow



Our Outdoor Area



A Place to Grow



The Start of our School Day



- Door opens 8.40am
- School starts 8.50am



Learning Throughout the Day



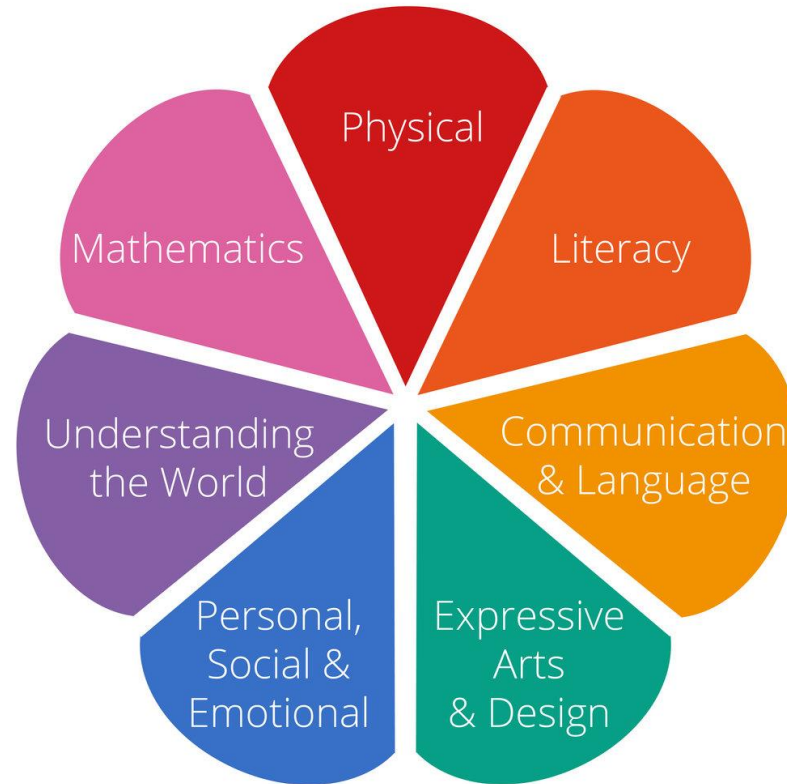
Independent Learning



Phonics



Mathematics



Adults make regular assessments of children. These help us to plan the next steps.

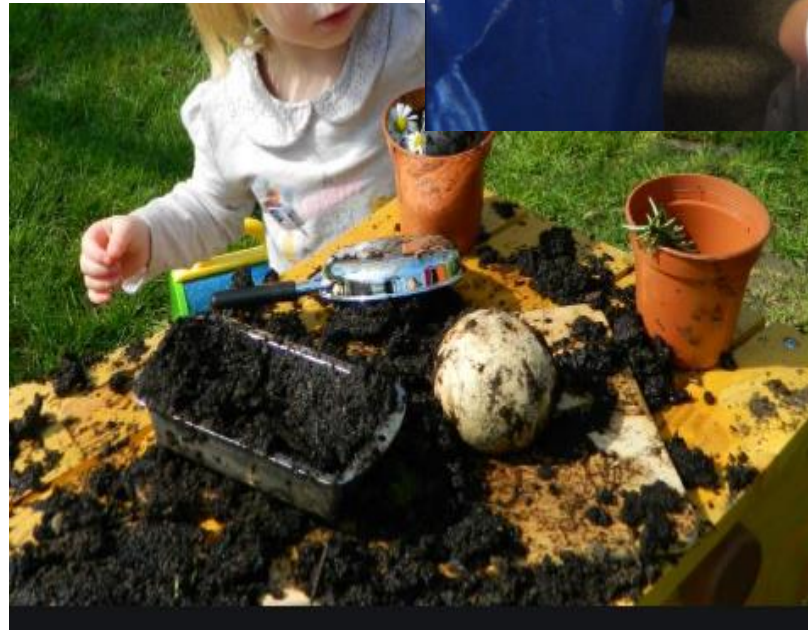
Messy Play



Please send the following items into school everyday:

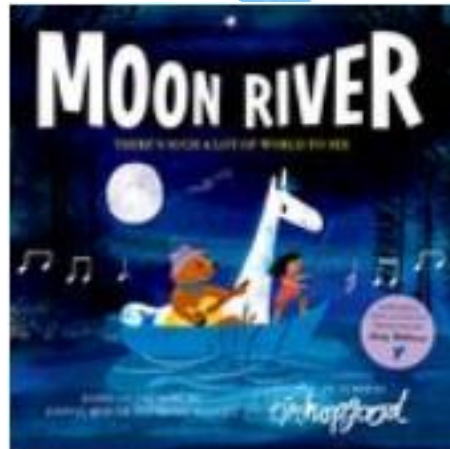
- A coat for outdoors
- Wellies
- A change of clothing

Please send your child in clothes that you don't mind them getting dirty!



Why not go on the school website and hear some of your teachers reading their favourite books!

Reading



- Your child will be given a book to read at home
- Please fill in their reading diary
- You will be provided with an easy to carry bookbag.

Collection Points



A Place to Grow



Follow the path round from the main gate. As you walk past the bus you will notice the 'Play Pod' store. RCR is to the right of the store, and REP is to the left.



11.30 – 12.15 Lunch



When your child starts Reception they will be eating lunch at school. This may be a school dinner or a packed lunch that they bring from home.

Your child will be supported at lunchtime but to help your child not to be overwhelmed it would help if you could practise using a knife and fork, or opening packets of food.

Healthy Eating



The Government states: Food served/consumed in schools and academies in England must meet the school food standards so that children have healthy, balanced diets.

The food standards states the following (*which applies across the whole school day*):

Food:

- No confectionery, chocolate and chocolate-coated products. Desserts, cakes and biscuits are allowed at lunchtime.
- No more than two portions a week of food that has been deep-fried, batter-coated or breadcrumb-coated

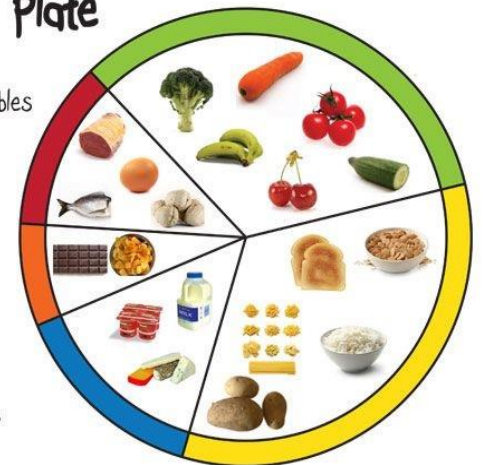


Drinks:

- Plain water (still or carbonated)
- Lower fat milk or lactose reduced milk
- Fruit or vegetable juice
- Plain soya, rice, oat drinks or yoghurt drinks.

A Balanced Plate

- Fruit and vegetables
- Grains, cereals and potatoes
- Dairy products
- Meat, fish, nuts and eggs
- Fats and sugars



Perry Hall is a no nut school, please do not send in anything containing nuts.

Free School Meals



If you think your child may be entitled to free school meals, please contact the school office or Wolverhampton City Council for further details.

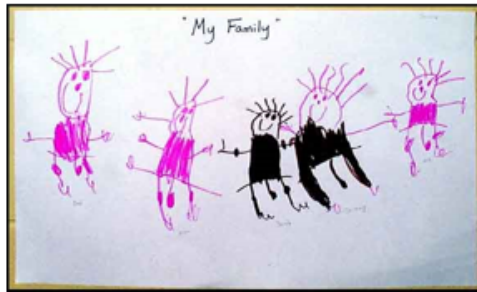
- Although all KS1 children are entitled to universal free school meals, ***it is important that you continue to claim for free school meals.***
- Further information can be obtained from the school office or online at <http://www.wolverhampton.gov.uk/freeschoolmeals>



Transition Activities (set by your child's new year group staff)

Getting to know you.

Draw a picture of you and your family ask your grown to help you to label the different people in your family, you could even include your pets.



Year Reception



2021/2022

Holiday Transition Activities

Please email us with any completed tasks by Monday 6th September 2021

ph.receptionhomelearning@perryhallmat.co.uk

Emails can be sent in anytime from Friday 23rd July and will be responded to when school reopens in September.

Number challenge



Be a number detective, investigate numbers all around you.

- What number is on your front door?
- Do you know numbers on a clock face?
- What numbers do you see when you go for a walk?
- How old are you?
Can you try writing these numbers?

Using the bathroom independently.

Please encourage your child to use the toilet independently. Including flushing the toilet and washing their hands with soap and water and remembering to dry their hands.



Put your coat on challenge!

During the first half term the children will be encouraged to put coats on by themselves and fasten them.

Every child who can do this by October half term will be rewarded with a certificate.

Lunchtime.

Lunch box.
Whilst shopping encourage your child to explore a variety of healthy food options to have in their lunch box



School meal.
Practise using a knife and fork to cut up your meals.



Name writing

Practise writing your first name independently.
If you can already write your first name, practise writing your second name too.



A Place to Grow

Please email your new year group email address with any completed tasks by Monday 6th September 2021.

ph.receptionhomelearning@perryhallmat.co.uk

Our 'Open-door' Policy and Communication with School



If you have any concerns or worries, please contact the school office by telephone to arrange a suitable appointment time to come and see us.

- **Please inform us immediately if there are any changes to your child's:**
 - Contact details
 - Medical information
 - The named person for collecting your child.
- **Please note- when collecting your child, all adults collecting (including the main carer) must know your child's password and also have photo ID with them. Your child will not be released without this. If someone different is collecting, please ensure the school is informed before 2.45pm.**
- Please bare with us while our staff familiarise themselves with you during the first few weeks of the academic year. If ID is asked for, please understand this is to ensure the safety of your child.



Can we take this opportunity to express from our Board of Governors and Trustees that we do not accept or tolerate any form of abuse from any member of the public. If this occurs, you will be asked to leave the premises.

Parent/Visitor Conduct On Site

Parents / Visitors are expected to treat all staff and children in a respectful way when on our school site. Any threatening, abusive or violent behaviour against any staff member or child is taken extremely seriously. Examples of such behaviour are below:

- raised voices
- shouting at staff
- swearing
- intimidating staff
- rallying other parents to become involved in intimidating behaviour
- publically voicing unsubstantiated claims about staff, children or the Academy.
- using racist or sexist terms
- using violence
- taking alcohol or drugs on the premises
- willful damage to school property
- theft
- threats or threatening behaviour
- altercations (verbal or physical towards other parents whilst on the school site)

This list is not an exhaustive list but seeks to provide illustrations of such behaviour that is not acceptable in our school. Anyone behaving in this way will be asked to leave the premises and the police will be called if verbal or physical harassment occurs. If necessary, action will be taken to ban anyone behaving in such a way from the school grounds.



A Place to Grow

PLEASE NOTE

**WE WILL NOT
TOLERATE ABUSE
TOWARDS OUR STAFF**

School Behaviour Policy

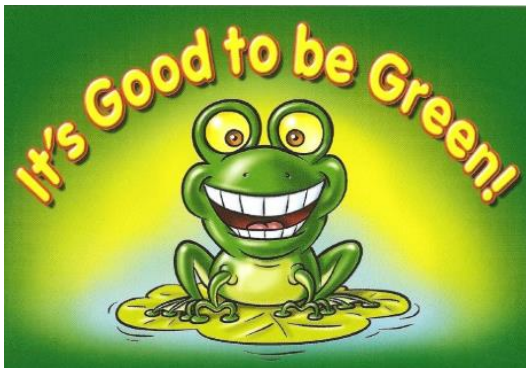


We aim to foster an environment which is rich in learning, based upon the diversity of the school. The expectations for behaviour should reflect this, inclusive of the children, parents, staff and the wider community. The Governing Body and the staff accept this principle and seek to create an environment which encourages and reinforces good behaviour.

Our school's 'Good to be Green' scheme...

We strive to adopt a fair approach to behaviour management within our classrooms, offering a range of motivational rewards to help keep positive behaviour on track through the use of our Good to be Green scheme.

We are currently making a transition between our adapted Covid-friendly Good to be Green system and our original system. You will receive further information regarding this closer to your child's return to school in September.



Rules Around School



Class Rules

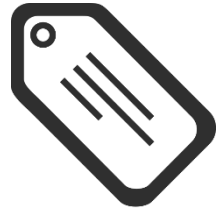
- Classroom rules will be created with the children in September.

Playground Rules

- To use positive language
- To play well with others
- To respect the adults who look after us
- To stand still and quiet when the bell/whistle goes
- To place all litter in the bins provided.



Label everything please!



School Uniform

WINTER UNIFORM



A Place to Grow

Boys

- Sweatshirt – dark green
- Shirt – white
- Tie – dark green with yellow stripe, with or without elastic
- Trousers – grey
- Shoes – black.

Girls

- Blouse – white
- Cardigan – dark green
- Pinafore – grey
- Skirt – grey
- Dress – green with white check
- Socks – white
- Shoes – flat, black.

Footwear

It is essential that children wear suitable footwear for school that allows their feet adequate room and gives proper support and ventilation. For this reason, please do not send children to school wearing fashion shoes or trainers.

Jewellery

In order to ensure adequate safety standards, particularly in organised games and physical education, children should not wear jewellery, especially earrings while at school. Studs are allowed, but must be removed or covered over for PE and games.

Summer Options

All pupils – white polo shirts

Girls have the option to wear a green and white checked dress

Boys have the option to wear grey shorts.

Where to buy?

All items can be purchased from Kids Corner, located on Showell Circus, Low Hill, Wolverhampton.

PE Kit

Our school PE kit for this year includes:

- Plain white T-shirt
- Plain black jogging bottoms (option for plain black shorts in the summer)
- Plain black jumper or zip up.
- Trainers.

We will continue to ask children to **come to school wearing the above PE kit on their PE days**. *You will be informed of your child's PE day as soon as timetables have been confirmed (closer to children's return in September).*

For health and safety reasons, please remove all jewellery and ensure long hair is tied back. If children wear earrings they **MUST** bring in their own plasters to cover these during P.E. and any after-school sports.

It is very important that your child is in the correct PE kit and footwear for their lesson.



Homework

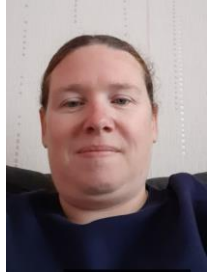


Perry Hall issues weekly homework to all children across school in Reception to Year 6.

The homework that we issue will either help children to prepare for lessons that are to come, or to consolidate the knowledge and skills that your child will have gained in school.

We are in the process of reviewing the homework that each year group will receive next academic year. You will be informed of our confirmed plans when children return to school in September.





Breakfast Club



At Perry Hall 'Kids Club' we offer both breakfast and after school facilities for children in Nursery up to year 6.

Breakfast club runs between 7.45am until 8.30am and we offer a variety of breakfast choices.

Breakfast club £4.00

Contact Details for Perry Hall Kids Club are:
Mrs Ferguson (breakfast club lead) 01902 558538
Email address phbreakfast-asc@perryhallmat.co.uk





After School Club



After school club runs Monday – Thursday.

Please note, we do not offer an after school club on a Friday.

After school club is split into two sessions. The early session runs between 3.15pm and 4.15pm and the late session is between 3.15pm until 5.55pm.

During after school club, the children are offered a range of snacks. We offer a range of fun activities for all ages including arts and crafts, games and outdoor sports.

Please see cost information below:

After-school early session £4.00. After-school late session £6.50.

Contact Details for Perry Hall Kids Club are:

Miss Parkinson (after-school club lead) 01902 558538

Email address phbreakfast-asc@perryhallmat.co.uk



Attendance

Absence and Illness

- If your child is ill whilst at school, we will ring you to collect your child. Please ensure we have current contact details.
- Please call the school office if you know your child will be absent and please ring each following day of the absence.
- Children will go straight to the classroom on arrival. Please make sure your child is on time as lessons start promptly.
- If your child is not collected by the allocated time, you will be called.



Attendance and Punctuality



If your child arrives at school after the bell and the gate has been closed, they will receive a late mark.

If absent:

If attendance is under 95% a letter will be sent from school to Parents/Carers



Parents/Carers must contact school every day of absence



Parents/Carers must provide medical evidence for all absences



- For example, GP appointment card/medication/medication packaging/prescriptions/hospital and appointment letters/

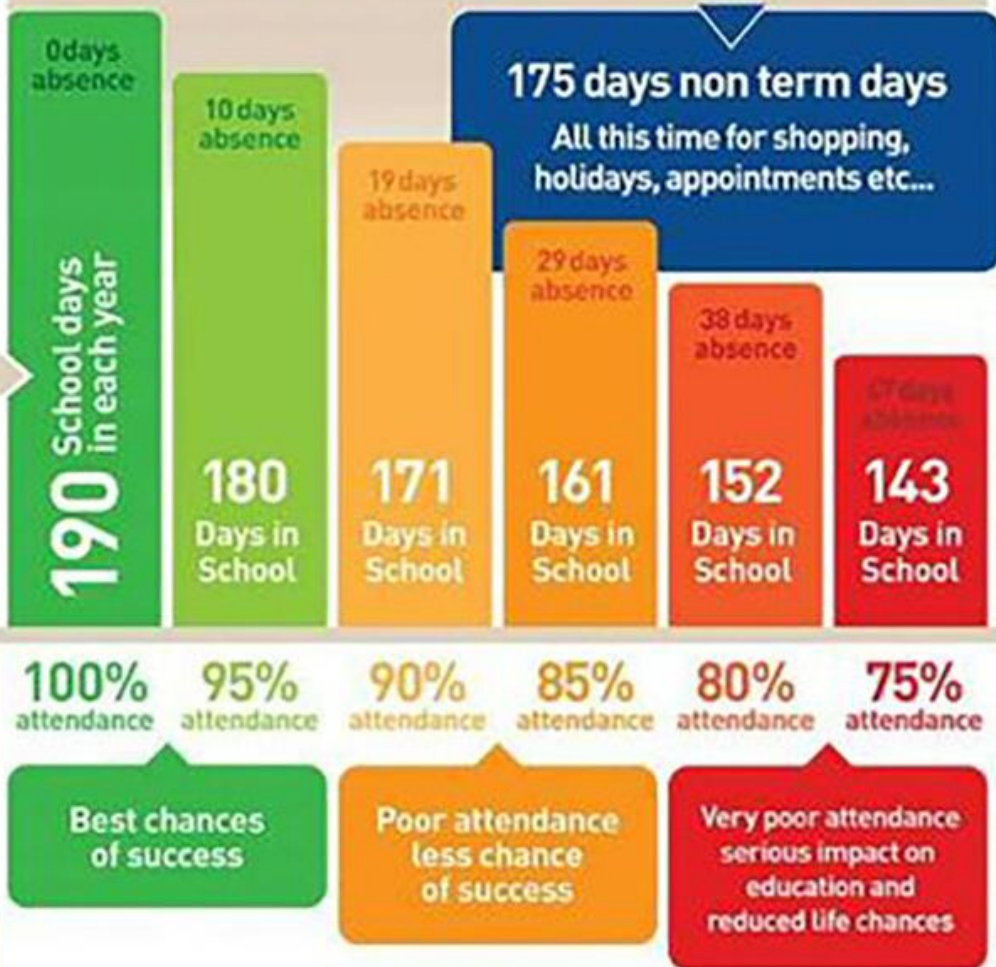
Term-time holidays

- The school **does not** authorise term-time holidays. However, if you require a leave of absence due to exceptional circumstances please complete the relevant documents.
- If you choose to take your child out of school on holiday during term time, this will be classed as an unauthorised absence.
- If you take your child/ren out on holiday during term time, a penalty notice of £60 could be imposed per child and per parent. This will be issued by the local authority. For further information please contact the school office.



365 days in a calendar year

Good attendance means being in school at least 95% of the time (180 to 190 days)



...being in school, on time, every day, ready to learn.



DID YOU KNOW? A two week holiday in term time means that the highest attendance you can achieve is **94.7%**

DID YOU KNOW? If you are 15 minutes late each day you will have missed a full 2 weeks of school in one year?



Term Dates 2021-2022

(Awaiting Trust Board Approval July 2021)



A Place to Grow

Autumn Term 2021

- Term Time: Monday 6 September 2021 to Friday 22 October 2021
- Half term: Monday 25 October 2021 to Friday 29 October 2021
- Term Time: Tuesday 2 November 2021 to Friday 17 December 2021

Spring Term 2022

- Term Time: Wednesday 5 January 2022 to Friday 18 February 2022
- Half term: Monday 21 February 2022 to Friday 25 February 2022
- Term Time: Monday 28 February 2022 to Friday 8 April 2022

Summer Term 2022

- Term Time: Monday 25 April 2022 to Friday 27 May 2022
- Half term: Monday 30 May 2022 to Friday 3 June 2022
- Term Time: Monday 6 June 2022 to Thursday 21 July 2022

Inset Days:

- Thursday 2nd September 2021
- Friday 3rd September 2021
- Monday 1st November 2021
- Tuesday 4th January 2022
- Friday 22nd July 2022



Important Information



- If your child needs medication, please complete the appropriate form available from the school office.
- All medication must be recently prescribed, clearly labelled and sent into school via the office.
- If your child has an inhaler, please ensure a health care plan is completed via the office, it is clearly labelled and sent into school via the office.
- Please do not send any type of hand sanitiser gels into school.
- If you would like to discuss your child's medical needs, please email the school on the following email address: phmedical@perryhallmat.co.uk

Please ensure you inform us of any changes.

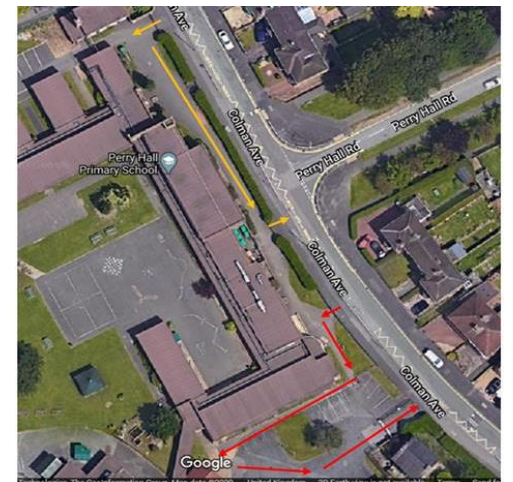


Covid-19 Safety Measures

In order to meet our current Covid-19 risk assessments and to maintain the safety of our children, parents and staff, we have the following things in place:

- a one way system when dropping off and collecting children
- staggered start and end times to the school day
- an expectation that everyone who can, should wear a face covering when on school site
- parents to not enter the school building, unless in exceptional circumstances.

Over the summer holidays, we will amend our risk assessments in line with updated government guidance and will inform you of our plans for September nearer to when children return to school.



Starting School Arrangements 2021



A Place to Grow

Week1

- Monday 6th September - Stay and play sessions and meet the parents:
- Group 1 - 9.00am – 10.15am
- Group 2A and 2B - 10.30am – 11.45am
- Group 3 - 1.00pm – 2.15pm
- Tuesday 7th September – children in for half a day (including lunch)
- Group 1 and group 2A only 8.50am-1.15pm
- Wednesday 8th September – children in for half a day (including lunch)
- Group 2B and group 3 only 8.50am-1.15pm
- Thursday 9th September – ALL CHILDREN in for a full day 8.40am-3.15pm
- Friday 10th September – ALL CHILDREN in for normal Friday hours 8.40am-1.15pm

Week 2

- ALL CHILDREN IN 8.40AM-3.15PM normal timetable to resume.

Our school week finishes at 1.15 each Friday. We do provide provision for working families until 3.15pm if required.

Please contact the office for more details about this provision.

Any Questions?

For further information please visit our school website

<https://www.perryhall.co.uk/>



A Place to Grow

If you have any questions, please contact the school office
on 01902 558538 during term time;
Mrs Cox & Mrs Wootton will be happy to assist you.



THANK YOU



Address

Perry Hall Primary School
Colman Avenue
Wednesfield
Wolverhampton
WV11 3RT

Call

01902 558538

Email

perryhall.groupemail@wolverhampton.gov.uk

Visit

www.perryhall.co.uk



Together We Succeed