



WELCOME TO Nursery



Part of Perry Hall Multi-Academy Trust
Together We Succeed



Schools Within Perry Hall Multi-Academy Trust (MAT)



The Trust was established in 2013.
At present, we have seven schools within our trust:



We are a Primary-only Trust and believe in giving
all of our children a first class education.

MAT Leadership Team



Mrs AK Cheema
OBE
CEO of the Trust



Mr D Asbury
Executive Headteacher
for the Trust



Miss R Kohli
Executive Headteacher
for the Trust

School Leadership Team



Miss R Kohli
Executive Headteacher
of Perry Hall



Mrs C Gibbins
Head of School
Y6 Lead
Maths Lead



Mr D Tarbuck
Chair of Governors



Mrs M Dodd
Assistant Head
EYFS and KS1
Phase Leadership



Mrs N Heer
Safeguarding
and Inclusion



Mrs C Russell
SENCO
Inclusion
Reception teacher



Mr C Fergusson
Y3-5 Phase Leadership
Pupil Premium Champion
Year 4 teacher



Mrs L McLean
English Lead
Year 6 teacher

Safeguarding Team



A Place to Grow



Miss R Kohli
Executive Head
Teacher



Mrs C Gibbins
Head of School
Y6 Lead
Maths Lead



Mrs N Heer
Safeguarding
and Inclusion



Mrs M Dodd
Assistant Head
EYFS and KS1
Phase Leadership



Mrs C Russell
SENCO
Inclusion
Reception teacher



Mr C Fergusson
Y3-5 Phase Leadership
Pupil Premium Champion
Year 4 teacher



Mrs L McLean
English Lead
Year 6 teacher

Our Trust Safeguarding Policy can be found on the school website:

<https://www.perryhall.co.uk/>

If you have any concerns about the welfare of your child, please come and talk to us.

Inclusion Team



Miss R Kohli
Executive Head
Teacher



Mrs C Gibbins
Head of School



Miss A Meredith
Assistant Educational
Psychologist



Mrs C Russell
SENCO and
Inclusion



Mrs N Heer
Safeguarding
and Inclusion

**Our Special Educational Needs policy and SEND Information
Report can be found on the school website:**

<https://www.perryhall.co.uk/>

The school follows the Local Authority recommended guidelines.

Nursery Team



Miss D Scott
Nursery Class Teacher



Miss Wild
Teaching Assistant



Miss Silk
Teaching Assistant



Miss Parkinson
Teaching Assistant

School Motto and Core Values



School Motto: Perry Hall Primary, a place to grow in confidence, creativity and ability.

At Perry Hall we are:

- Respectful
- Caring
- Determined – never give up
- Enthusiastic
- Independent
- Motivated.



Our Early Years Vision

In the Early Years Foundation Stage at Perry Hall Primary School, we provide **an enabling environment which promotes the learning and development of every child attending our setting.**



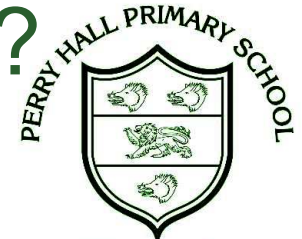
Our EYFS curriculum is designed to **allow children to develop the knowledge and life skills that they need to succeed in life.** Children's learning is led through a balance of discrete, adult-led sessions and carefully planned continuous provision where children have the opportunity to investigate and apply their learning using our stimulating indoor and outdoor environments.

As a team, we feel it is of upmost importance to get to know children and their families as well as possible. We succeed in this through building effective partnerships with parents and carers to ensure the best possible start to school life for our children.



What is the Early Years Foundation Stage?

The Foundation Stage for children covers seven areas of learning
– all areas of learning and development are important and inter-connected.



A Place to Grow

Prime Areas

- **Personal, Social and Emotional Development**

- Building Relationships
- Managing Self
- Self-regulation

- **Communication and Language**

- Listening, Attention and Understanding
- Speaking

- **Physical Development**

- Gross Motor Skill
- Fine Motor Skills

These three areas are particularly crucial for igniting children's curiosity and enthusiasm for learning, and for building their capacity to learn, form relationships and thrive.

They lay the foundations for children's success in all other areas of learning and of life.

What is the Early Years Foundation Stage?

The Foundation Stage for children covers seven areas of learning
– all areas of learning and development are important and inter-connected.



- **Literacy**

- Comprehension
- Word reading
- Writing

- **Understanding the World**

- Past and Present
- People, culture and Communities
- The Natural World

Specific Areas

- **Maths**

- Number
- Numerical Patterns

- **Expressive Art and Design**

- Creating with Materials
- Being Imaginative and Expressive

All children work towards 17 statements.



**Playing and Exploring
(Engagement)**
Finding out and exploring
Playing with what they know
Being willing to have a go



**Characteristics of
Effective Teaching
and Learning**

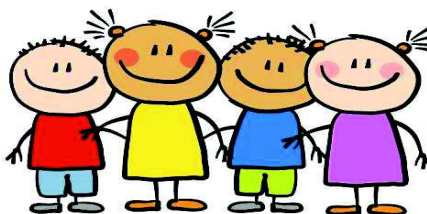
The ways in which your
child engages with other
people and their
environment

**Active Learning
(Motivation)**

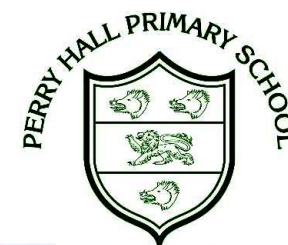
Being Involved and Concentrating
Keep on trying
Enjoy achieving what they set out to do

**Creating and Thinking Critically
(Thinking)**

Having their own ideas
Choosing ways to do things
Making links



Our Outdoor Area



A Place to Grow



Arrival and Collection Times



Nursery AM -
08:45am - 11:45am

Nursery PM -
12:30pm - 3:30pm



End of the Nursery Session



Staff will release the children from the main Nursery door.

Please stand behind the yellow line when collecting your child.

AM session 11.30 - 11.45

PM session 3.15 - 3.30



Learning Throughout the Session

Adults make regular assessments of children.
These help us to plan the next steps.



Snack time

Circle time

Singing
and stories

Adult led
learning

Indoor
play

Outdoor
play

Independent learning



Messy Play



Please send the following items into school everyday:

- A coat for outdoors
- Wellies
- A change of clothing

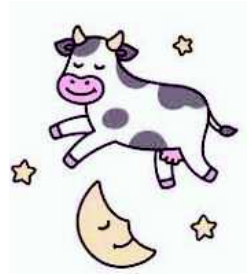
Please send your child in clothes that you don't mind them getting dirty!



Reading at Home



- Please read to your child every day
- Talk about the front cover and the pictures in the book
- Talk about the marks on the pages
- Introduce lots of new words

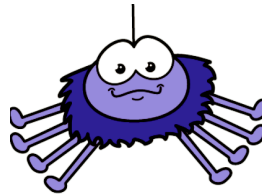


Nursery Rhymes

Sing lots of nursery rhymes together everyday:



- Twinkle, twinkle, little star. ...
- Row, row, row your boat. ...
- Humpty Dumpty sat on a wall. ...
- Wheels on the bus. ...
- Old Mac Donald had a farm. ...
- 1, 2, 3 4, 5, once I caught a fish alive. ...
- Incy, wincy spider. ...
- Hey, diddle diddle.



- Jack and Jill went up the hill. ...
- The grand old Duke of York. ...
- 5 little speckle frogs. ...
- 1, 2 buckle my shoe. ...
- Little Miss Muffet. ...
- Little Bo Peep. ...
- Five current buns in a bakers shop. ...
- Rain, rain, go away....

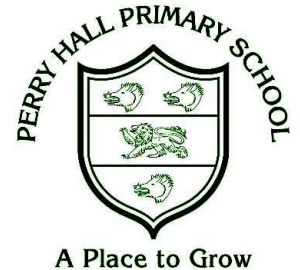


Toileting

Children develop at different rates and you should encourage your child to use the toilet when they are ready.

Ways you can support your child:

- Choose a time to potty train when nothing else significant is happening in your child's life e.g. the arrival of a new baby.
- Give plenty of praise every time your child uses the potty or toilet.
- Dress your child in trousers or leggings that can be pulled down easily.
- It is possible to skip the potty stage and use the toilet from the start.
- Trainer pants are ideal for trips away from home, but may confuse your child as they are so like nappies your child may forget the need to use the potty.
- Try to make using the potty as enjoyable as possible.
- Do not get cross! Try to remain calm, even if your child has made a mess.
- Teach boys to use the potty sitting down at first. They can learn how to stand up later.
- Once your child has mastered daytime potty training, then start to think about night times.



Label everything please!



School Uniform

WINTER UNIFORM



A Place to Grow

Boys

- Sweatshirt – dark green
- Shirt – white
- Tie – dark green with yellow stripe, with or without elastic
- Trousers –grey
- Shoes – black.

Girls

- Blouse – white
- Cardigan – dark green
- Pinafore – grey
- Skirt – grey
- Dress – green with white check
- Socks – white
- Shoes – flat, black.

Summer Options

All pupils – white polo shirts

Girls have the option to wear a green and white checked dress

Boys have the option to wear grey shorts.

Footwear

It is essential that children wear suitable footwear for school that allows their feet adequate room and gives proper support and ventilation. For this reason, please do not send children to school wearing fashion shoes or trainers.

Jewellery

In order to ensure adequate safety standards, particularly in organised games and physical education, children should not wear jewellery, especially earrings while at school. Studs are allowed, but must be removed or covered over for PE and games.

Where to buy?

All items can be purchased from Kids Corner, located on Showell Circus, Low Hill, Wolverhampton.

Healthy Eating

The Government states: Food served/consumed in schools and academies in England must meet the school food standards so that children have healthy, balanced diets.

The food standards states the following (*which applies across the whole school day*):

Food:

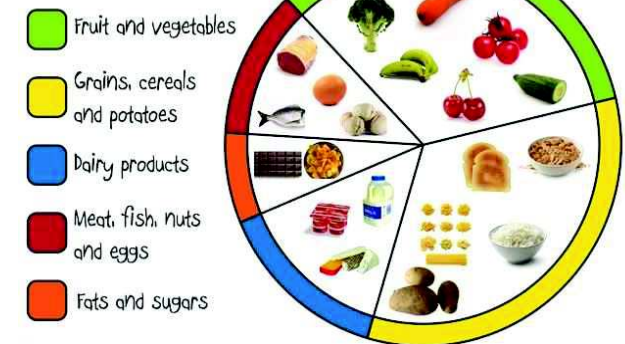
- No confectionery, chocolate and chocolate-coated products. Desserts, cakes and biscuits are allowed at lunchtime.
- No more than two portions a week of food that has been deep-fried, batter-coated or breadcrumb-coated

Drinks:

- Plain water (still or carbonated)
- Lower fat milk or lactose reduced milk
- Fruit or vegetable juice
- Plain soya, rice, oat drinks or yoghurt drinks.



A Balanced plate



Perry Hall is a no nut school, please do not send in anything containing nuts.

Our 'Open-door' Policy and Communication with School



If you have any concerns or worries, please contact the school office by telephone to arrange a suitable appointment time to come and see us.

- **Please inform us immediately if there are any changes to your child's:**
 - Contact details
 - Medical information
 - The named person for collecting your child.
- **Please note- when collecting your child, all adults collecting (including the main carer) must know your child's password and also have photo ID with them. Your child will not be released without this. If someone different is collecting, please ensure the school is informed before 11am (for AM collection) and 2.45pm (for PM collection).**
- Please bare with us while our staff familiarise themselves with you during the first few weeks of the academic year. If ID is asked for, please understand this is to ensure the safety of your child.



Can we take this opportunity to express from our Board of Governors and Trustees that we do not accept or tolerate any form of abuse from any member of the public. If this occurs, you will be asked to leave the premises.

Parent/Visitor Conduct On Site

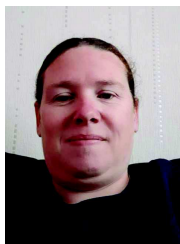
Parents / Visitors are expected to treat all staff and children in a respectful way when on our school site. Any threatening, abusive or violent behaviour against any staff member or child is taken extremely seriously. Examples of such behaviour are below:

- raised voices
- shouting at staff
- swearing
- intimidating staff
- rallying other parents to become involved in intimidating behaviour
- publically voicing unsubstantiated claims about staff, children or the Academy.
- using racist or sexist terms
- using violence
- taking alcohol or drugs on the premises
- willful damage to school property
- theft
- threats or threatening behaviour
- altercations (verbal or physical towards other parents whilst on the school site)

This list is not an exhaustive list but seeks to provide illustrations of such behaviour that is not acceptable in our school. Anyone behaving in this way will be asked to leave the premises and the police will be called if verbal or physical harassment occurs. If necessary, action will be taken to ban anyone behaving in such a way from the school grounds.



PLEASE NOTE
WE WILL NOT
TOLERATE ABUSE
TOWARDS OUR STAFF



Breakfast Club



At Perry Hall 'Kids Club' we offer both breakfast and after school facilities for children in Nursery up to year 6.

Breakfast club runs between 7.45am until 8.30am and we offer a variety of breakfast choices.

Breakfast club £4.00

Contact Details for Perry Hall Kids Club are:
Mrs Ferguson (breakfast club lead) 01902 558538
Email address phbreakfast-asc@perryhallmat.co.uk





After School Club



After school club runs Monday – Thursday.

Please note, we do not offer an after school club on a Friday.

After school club is split into two sessions. The early session runs between 3.15pm and 4.15pm and the late session is between 3.15pm until 5.55pm.

During after school club, the children are offered a range of snacks. We offer a range of fun activities for all ages including arts and crafts, games and outdoor sports.

Please see cost information below:

After-school early session £4.00. After-school late session £6.50.

Contact Details for Perry Hall Kids Club are:

Miss Parkinson (after-school club lead) 01902 558538

Email address phbreakfast-asc@perryhallmat.co.uk



30 Hours Provision



We are able to offer 30 hour provision for Nursery aged children. Places are limited. If this is something you are eligible for and would like 30 hour provision please enquire at the school office.

Follow this link

<https://www.childcarechoices.gov.uk/>
to see the 30 hour funding eligibility criteria.

Attendance

Absence and Illness

- If your child is ill whilst at Nursery, we will ring you to collect your child. Please ensure we have current contact details.
- Please call the school office if you know your child will be absent and please ring each following day of the absence.
- If your child is not collected by the allocated time, you will be called.





Important Information



- If your child needs medication, please complete the appropriate form available from the school office.
- All medication must be recently prescribed, clearly labelled and sent into school via the office.
- If your child has an inhaler, please ensure a health care plan is completed via the office, it is clearly labelled and sent into school via the office.
- Please do not send any type of hand sanitiser gels into school.
- If you would like to discuss your child's medical needs, please email the school on the following email address: phmedical@perryhallmat.co.uk

Please ensure you inform us of any changes.

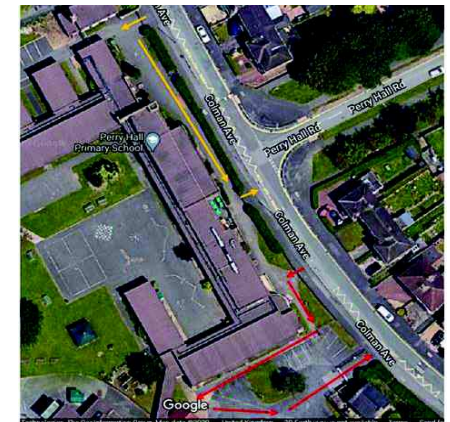


Covid-19 Safety Measures

In order to meet our current Covid-19 risk assessments and to maintain the safety of our children, parents and staff, we have the following things in place:

- a one way system when dropping off and collecting children
- staggered start and end times to the school day
- an expectation that everyone who can, should wear a face covering when on school site
- parents to not enter the school building, unless in exceptional circumstances.

Over the summer holidays, we will amend our risk assessments in line with updated government guidance and will inform you of our plans for September nearer to when children return to school.





Term Dates 2021-2022

(Awaiting Trust Board Approval July 2021)



A Place to Grow

Autumn Term 2021

- Term Time: Monday 6 September 2021 to Friday 22 October 2021
- Half term: Monday 25 October 2021 to Friday 29 October 2021
- Term Time: Tuesday 2 November 2021 to Friday 17 December 2021

Spring Term 2022

- Term Time: Wednesday 5 January 2022 to Friday 18 February 2022
- Half term: Monday 21 February 2022 to Friday 25 February 2022
- Term Time: Monday 28 February 2022 to Friday 8 April 2022

Summer Term 2022

- Term Time: Monday 25 April 2022 to Friday 27 May 2022
- Half term: Monday 30 May 2022 to Friday 3 June 2022
- Term Time: Monday 6 June 2022 to Thursday 21 July 2022

Inset Days:

- Thursday 2nd September 2021
- Friday 3rd September 2021
- Monday 1st November 2021
- Tuesday 4th January 2022
- Friday 22nd July 2022

Nursery Starting School Arrangements



A Place to Grow

Week 1: Stay and play sessions and meet the parents:

AM Children	PM Children
Monday 6th - Inset Day	Monday 6th - Inset Day
Tuesday 7th -	Tuesday 7th -
Group 1 9.00am - 10.15am Group 2 10.30am - 11.45am	Group 1 12.45pm - 2.00pm Group 2 2.15pm - 3.30pm
Wednesday 8th -	Wednesday 8th -
Group 3 9.00am - 10.15am Group 4 10.30am - 11.45am	Group 3 12.45pm - 2.00pm Group 4 2.15pm - 3.30pm
Thursday 9th - Groups 1, 2 full am Session 8.45/9.00 - 11.30/45am	Thursday 9th - Groups 1, 2 full pm Session 12.30/12.45 - 3.15/3.30pm
Friday 10th - Groups 3, 4 full am Session 8.45/9.00 - 11.30/45am	Friday 10th - Groups 3, 4 full pm Session 12.30/12.45 - 3.15/3.30pm

Week 2: Monday 13th September - All children in for full Nursery sessions.

30 hour provision will begin on Monday 13th September.

Any Questions?

For further information please visit our school website

<https://www.perryhall.co.uk/>



If you have any questions, please contact the school office
on 01902 921159 during term time;
Mrs Cox & Mrs Wootton will be happy to assist you.



Please note, this is a new phone number that will be in use from 15.07.21.

THANK YOU



Address

Perry Hall Primary School
Colman Avenue
Wednesfield
Wolverhampton
WV11 3RT

Call

01902 921159

Email

perryhall.groupemail@wolverhampton.gov.uk

Visit

www.perryhall.co.uk



Together We Succeed