

Year 3 – Summer Term– 1 –Ancient Egypt

This grid outlines the knowledge and skills that Year 3 children will gain throughout this term's topic.

As readers we will:

Be reading 'The Egyptian Cinderella' throughout the term. We will focus on language, retrieval and inferencing skills. We shall be reading a range of texts to support our story boarding ideas.



As mathematicians we will:

Revisit place value to reinforce our understanding of different values. This will then translate to addition and subtraction skills, including missing number problem and estimation. We will also look at multiplication and its links with division including doubling and halving.



As writers we will:

Be working from the text 'The Egyptian Cinderella' and will be writing a range of different narratives. We will be revisiting previously taught writing skills such as conjunctions, expanded noun phrases and adverbs.



As scientists we will:

Continue with our topic of 'Animals including Humans'. We will be investigating how our muscles work, how food, water and oxygen are transported within the body, and the circulatory systems across a range of animals including humans.



As historians we will:

Be studying ancient Egypt, looking at different artefacts and what they were used for. We will also be looking at the life of children in Egypt and beginning to learn about burials and mummification.



As geographers we will:

We will be learning about the River Nile. We will look at the physical and human Geography related to the River Nile.



As artists and designers we will:

We will be designing our own cartouche and using clay to create them. We will also be investigating different pointillism artists and having a go at creating our own pointillism art.



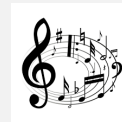
In PSHE we will:

Be learning all about ourselves and celebrating what we are good at and achievements that have been awarded. We will also be setting goals for ourselves to help us achieve more success in the future.



As musicians we will:

Be assessing a range of ceremonial chants and using this to create and perform our own compositions as part of our learning about the Egyptian gods.



In PE we will:

Summer 1: Gymnastics. Developing children's control and execution of movement across the floor and raised levels.
Summer 2: Athletics. Refining and extending sprinting skills as well as introducing the javelin and tug of war.



In computing we will:

Be inputting instructions to navigate a programmable robot around an 'Egyptian pyramid', using Scratch Junior and Bee-bots.



In Spanish we will:

Be revisiting how to count in Spanish and naming different colours.



In RE we will:

Be studying the Hindu religion and learning about what they believe God is like and who Hindus worship. We will also begin to learn about the afterlife.



At Perry Hall:

As part of our Social, Moral, Spiritual and Cultural curriculum we will continue to interweave our school motto and core values into everything we do.

Motto:

Perry Hall Primary, a place to grow in confidence, creativity and ability.

At Perry Hall we are:

Respectful, Caring, Determined – never give up, Enthusiastic, Independent and Motivated.



Breakfast Club and Afterschool Club:

If you wish to book your child into breakfast or afterschool club or need to make contact with the staff, please use: phbreakfast-asc@perryhallmat.co.uk



Medical:

For any pupil medical related issues that you need to inform us about, please contact the appropriate staff using: phmedical@perryhallmat.co.uk



Homework:

Homework (Year 2-6)	What is required?	Given out?	Due back in?	Where will I find this?	Do I need a log in?
Reading: school reading books (weekly)	Reading books will be sent home each Thursday and will need to be returned into school the following Monday .	Thursday	Monday	Sent home with your child	No.
Spelling (weekly)	A weekly spelling task will be assigned to your child for them to complete. (Spellings will be taken from either the Y1/2, Y3/4 or the Y5/6 statutory spelling lists).	<i>New spellings issued:</i> Friday	<i>Spellings tested:</i> Following Friday	Microsoft Teams www.office.com	Yes- see your child's personalised bookmark.
Mathematics (weekly)	A weekly maths task will be assigned to your child for them to complete.	Friday	Tuesday	Microsoft Teams www.office.com	Yes- see your child's personalised bookmark.
Timestable Rockstars (daily/weekly)	Daily/weekly times tables practice. Your child's class teacher will set a variety of challenges.	Friday	Tuesday	https://play.trocks.com/author/school/student/30021	Yes- see your child's personalised bookmark.
Topic Grid (termly)	A range of engaging tasks, related to your child's termly topic and covering all curriculum areas, will be set each term. Children are to work through these tasks and send evidence of their completed outcomes to their year group email address.	Towards the start of the term.	Through-out the term.	Microsoft Teams www.office.com	Yes- see your child's personalised bookmark.

If you do not have access to Teams, please email the Year 3 email address.

School Uniform:

Children **must wear full, summer uniform**. Uniform plays a valuable role in contributing to our school ethos and helps to set an appropriate tone. We thank you in advance for supporting us in upholding our standards.

Girls:

- green and white checked summer dress with a green cardigan

or

- white polo shirt/blouse and grey skirt / pinafore / trousers with a green cardigan
- plain, black, low heeled shoes (no open toe sandals).

Boys:

- grey trousers/shorts and white polo shirt with a green jumper
- plain, black school shoes (no trainers/pumps).

PE days & Uniform Reminder:

This term, your child's PE day is a **Monday**.

On each **Monday**, please send your child into school wearing their PE kit.

A reminder, PE kit entails:

- plain white t-shirt
- plain black jogging bottoms/shorts
- plain black zip up/jumper
- trainers.

Year Group Email Address:

Reminder, your child's year group email address is: ph.y3homelearning@perryhallmat.co.uk

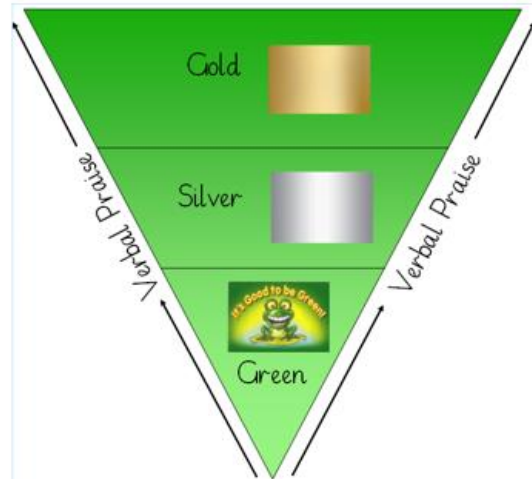
Please use this, if you need to make contact with your child's year group staff.



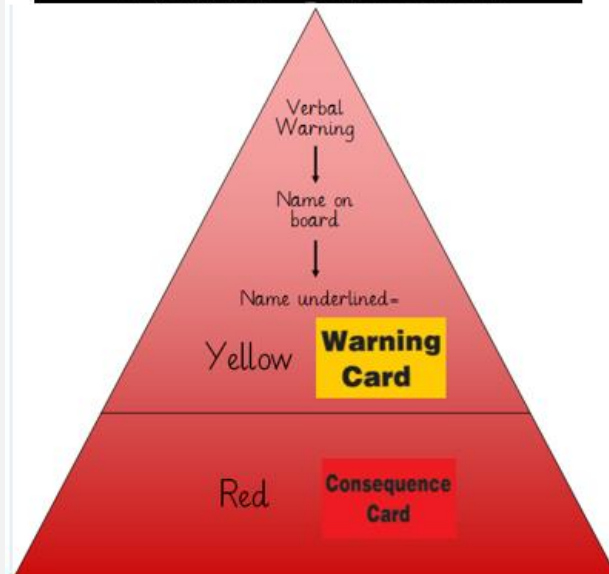
Other Year Group Specific Information:

- Please ensure children have a healthy packed lunch and bring in healthy snacks for break times.
- Please use the year 3 email (ph.y3homelearning@perryhallmat.co.uk)
- Please ensure your child arrives at school in the morning promptly. Lessons start at 8.45am and any disruption impacts all children's learning.

Good to be Green Reminder:

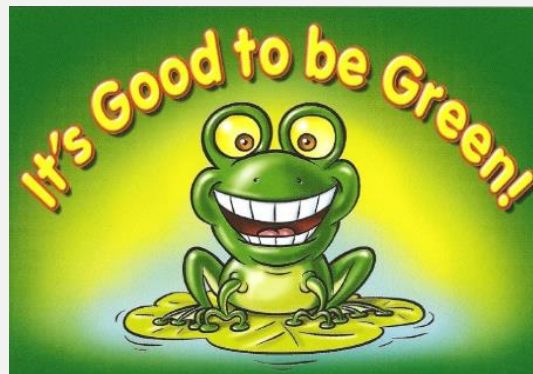


IT'S GOOD TO BE GREEN!



We aim to foster an environment which is rich in learning, based upon the diversity of the school. The expectations for behaviour should reflect this, inclusive of the children, parents, staff and the wider community. The Governing Body and the staff accept this principle and seek to create an environment which encourages and reinforces good behaviour.

Please note: Due to changing government guidelines as a result of the pandemic, we will ensure we communicate any changes made to our behaviour policy throughout the year.



IT'S GOOD TO BE GREEN

If you end your day on a 'Gold' you will receive a certificate via email.



If you remain 'Green' all week (ending every day either on a green, silver or gold) you will receive some 'Good to be Green' time at the end of each week.

If you receive a yellow you need improve your behaviour choices.

Warning Card

Consequence Card

If you receive a red:

- You will sit on the reflection bench (with a member of staff) during your next playtime and complete a reflection sheet.
- Your grown-ups will be informed at the end of the day via phone or email.

If you receive a purple you will:

- Speak with a senior leader immediately.
 - Miss your lunchtime.
 - Be issued with a behaviour report.
- Your grown-ups will be informed by phone.

