

# Year 1 – Summer Term– 2021 – Castles

*This grid outlines the knowledge and skills that Year 1 children will gain throughout this term's topic.*

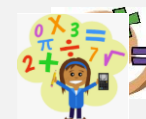
## As readers we will:

- Listen to and discuss a wide range of stories including non-fiction and poetry.
- Read accurately by blending sounds.
- Make inferences based on what has been said and done.
- Be able to retrieve information from a text.
- Begin to use expression and intonation when reading aloud.



## As mathematicians we will:

- Explore the place value of numbers to 100 and beyond
- Count forwards and backwards in 2s, 5s and 10s
- Total amounts of money involving all coins
- Recognise, name and describe properties of 3d shapes
- Begin to solve one step problems involving addition, subtraction, multiplication and division.



## As writers we will:

- Compose sentences orally to ensure they make sense.
- Make sure we use capital letters, finger spaces and full stops consistently.
- Join sentences using connectives including and, but and so.
- Begin to use adverbs of time in our writing.
- Be able to retell a story with a clear beginning, middle and end.



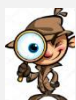
## As scientists we will:

- Ask simple scientific questions.
- Use simple equipment to make scientific observations.
- Suggest what have found out using our observations.
- Recognise simple forces including pushes and pulls.
- Explore seasonal changes between Spring and Summer.



## As historians we will:

- Sequence events in chronological order.
- Describe similarities and differences.
- Identify different ways to represent the past.
- Learn about the significant lives of people from the past.
- Use a range of sources to find out characteristic features of the past.



## As geographers we will:

- Use basic geographical vocabulary.
- Name, locate and identify the four countries and capital cities of the United Kingdom.
- To understand the term physical and human features.



## As designers we will:

- Plan and design a product by modelling and communicating our ideas.
- Select and use the correct tools to perform practical tasks.
- Explore and evaluate a range of existing products.



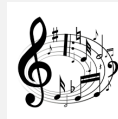
### As artists we will:

- Develop a wide range of art and design technique in using colour, pattern and shape.
- Use drawing, painting and sculpture to develop and share ideas, experiences and imagination.
- Learn about the work of a range of artists and designers and their similarities and differences.



### As musicians we will:

- Listen to and appraise a piece of music.
- Begin to recognise the features of folk music.
- Explore different styles of music.



### In PE we will:

- To take part in collaborative team games.
- Explore how to move and control a ball in different ways.
- To develop competency with basic movements including running and jumping.
- Understand the movement patterns required to collaborate a dance sequence.



### In computing we will:

- Practise logging on and navigating independently.
- Begin adding pictures and texts to my work.
- Use technology safely and respectfully keeping personal information private.



### In PSHE we will:

- Recognise how a person's behaviour including their own can affect other people.
- Suggest simple strategies for resolving conflict situations.
- Name major internal body parts and explain the simple bodily processes associated with them.
- Describe ways in which we can keep ourselves safe.



### In RE we will:

- Become aware that people have different kinds of qualities and powers.
- Know that Jesus taught others how to pray.
- Know that the Lord's Prayer is an important Christian prayer used by millions.
- Listen to stories that Jesus told and discuss their meanings.



## At Perry Hall:

As part of our Social, Moral, Spiritual and Cultural curriculum we will continue to interweave our school motto and core values into everything we do.

### Motto:

**Perry Hall Primary, a place to grow in confidence, creativity and ability.**

### At Perry Hall we are:

**Respectful, Caring, Determined – never give up, Enthusiastic, Independent and Motivated.**



## Breakfast Club and Afterschool Club:

If you wish to book your child into breakfast or afterschool club or need to make contact with the staff, please use: [phbreakfast-asc@perryhallmat.co.uk](mailto:phbreakfast-asc@perryhallmat.co.uk)



## Medical:

For any pupil medical related issues that you need to inform us about, please contact the appropriate staff using: [phmedical@perryhallmat.co.uk](mailto:phmedical@perryhallmat.co.uk)



## Homework:

Homework (Year 1)	What is required?	Given out?	Due back in?	Where will I find this?	Do I need a log in?
<b>Reading: school reading books (weekly)</b>	Reading books will be sent home each <b>Thursday</b> and will need to be returned into school the following <b>Monday</b> .	Thursday	Monday	Sent home with your child	No.
<b>Spelling (weekly)</b>	A weekly spelling task will be assigned to your child for them to complete from the Y1/2 word list.	<i>New spellings issued:</i> Friday	<i>Spellings tested:</i> Following Friday	Microsoft Teams <a href="http://www.office.com">www.office.com</a>	Yes- see your child's personalised bookmark.
<b>Mathematics (weekly)</b>	A weekly maths task will be assigned to your child for them to complete.	Friday	Tuesday	Microsoft Teams <a href="http://www.office.com">www.office.com</a>	Yes- see your child's personalised bookmark.
<b>Topic Grid (termly)</b>	A range of engaging tasks, related to your child's termly topic and covering all curriculum areas, will be set each term. Children are to work through these tasks and send evidence of their completed outcomes to their year group email address.	Towards the start of the term.	Through-out the term.	Microsoft Teams <a href="http://www.office.com">www.office.com</a>	Yes- see your child's personalised bookmark.

## School Uniform:

Children **must wear full, summer uniform**. Uniform plays a valuable role in contributing to our school ethos and helps to set an appropriate tone. We thank you in advance for supporting us in upholding our standards.

### Girls:

- green and white checked summer dress with a green cardigan

### or

- white polo shirt/blouse and grey skirt / pinafore / trousers with a green cardigan
- plain black, low heeled shoes (no open toe sandals).

### Boys:

- grey trousers/shorts and white polo shirt with a green jumper
- plain black school shoes (no trainers/pumps).

## PE days & Uniform Reminder:

This term, your child's PE day is a **Wednesday**.

On each Wednesday, please send your child into school wearing their PE kit.

A reminder, PE kit entails:

- plain white t-shirt
- plain black jogging bottoms/shorts
- plain black zip up/jumper
- trainers.

## Year Group Email Address:

Reminder, your child's year group email address is:

**[ph.y1homelearning@perryhallmat.co.uk](mailto:ph.y1homelearning@perryhallmat.co.uk)**

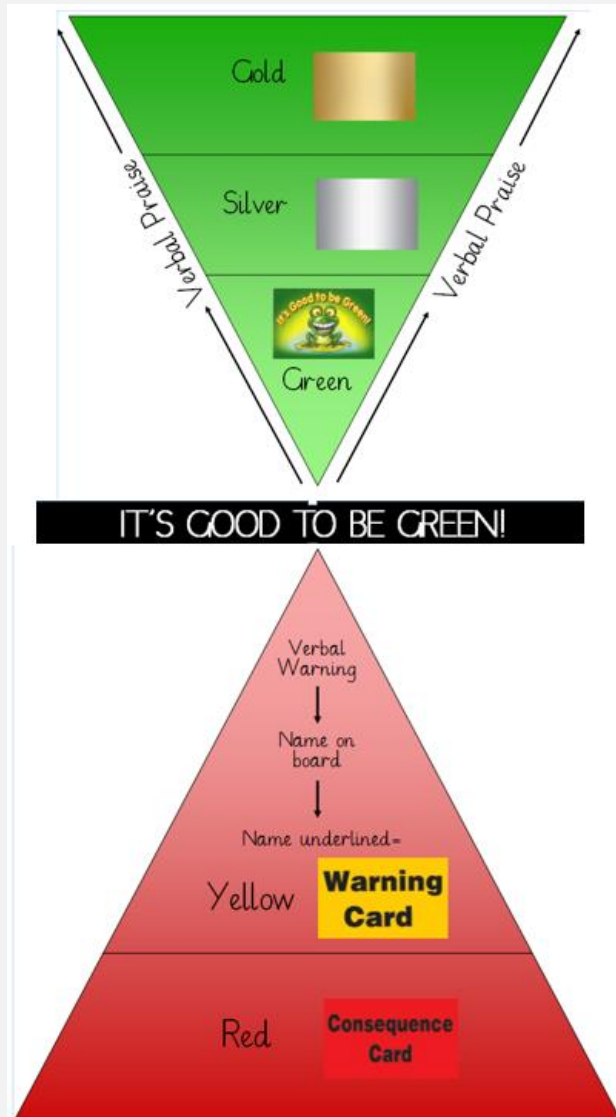
Please use this, if you need to make contact with your child's year group staff.



## Other Year Group Specific Information:

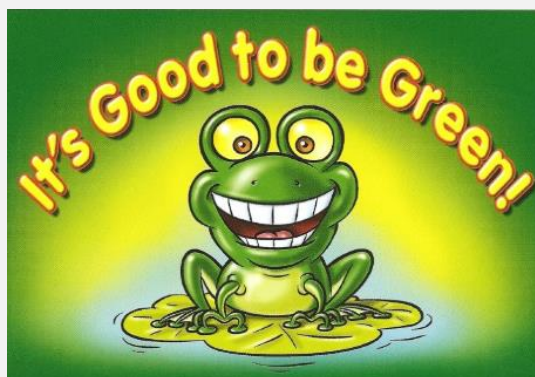
- Reading books should be returned to school each Monday and will be given out the following Thursday.
- Please ensure children are wearing an appropriate PE kit each Wednesday. This will be a tracksuit, t-shirt and trainers.

## Good to be Green Reminder:



We aim to foster an environment which is rich in learning, based upon the diversity of the school. The expectations for behaviour should reflect this, inclusive of the children, parents, staff and the wider community. The Governing Body and the staff accept this principle and seek to create an environment which encourages and reinforces good behaviour.

Please note: Due to changing government guidelines as a result of the pandemic, we will ensure we communicate any changes made to our behaviour policy throughout the year.



## IT'S GOOD TO BE GREEN

If you end your day on a 'Gold' you will receive a certificate via email.



If you remain 'Green' all week (ending every day either on a green, silver or gold) you will receive some 'Good to be Green' time at the end of each week.

If you receive a yellow you need improve your behaviour choices.

**Warning Card**

**Consequence Card**

If you receive a red:

- You will sit on the reflection bench (with a member of staff) during your next playtime and complete a reflection sheet.
- Your grown-ups will be informed at the end of the day via phone or email.

If you receive a purple you will:

- Speak with a senior leader immediately.
- Miss your lunchtime.
- Be issued with a behaviour report. Your grown-ups will be informed by phone.

