

Year 3: w.b. 22nd February 2021

Remote Learning Arrangements and Termly Topic Grid

Year Group Updates and Reminders:

Whilst this February half-term will have been very different to previous ones given the current restrictions, we hope you have had a safe and enjoyable week. On Monday 22nd February, we look forward to resuming our remote learning offer until we receive further information from the Department for Education, following the Prime Minister's announcement on Monday, about the potential reopening of schools.

As we embark upon Spring Term 2, we would again like to take this opportunity to thank you for your support during this pandemic in assisting your child with their home learning. We do not under-estimate the challenges you may have faced. We look forward to continuing this partnership until our school can reopen.

Please stay safe and get in touch if you require any support. Mrs Gibbins and Miss Kohli.

We hope you have all had a well-deserved break and that you are all looking forward to returning to remote learning. We have some very exciting activities planned for you that we know you will enjoy. Please don't forget to submit your work via teams or email your work to us on the year group email address. From Monday, we will be extending the last live lesson to introduce the afternoon tasks and answer any questions you may have. We are looking forward to seeing you all again on Monday.

The Year 3 Team.

Year Group Email Address:

Reminder, your child's year group email address is:

ph.y3homelearning@perryhallmat.co.uk

Please use this, if you need to make contact with your child's year group staff.



Vulnerable and Critical Worker Children:

Vulnerable children and those who have parents/carers as Critical Workers are covering the same content as is outlined in this document within school.



Reminder: Our PE day is Monday.

When dropping off and collecting your child(ren), please ensure you continue to follow the one way systems in place and wear a mask when on site to protect yourselves and others.

Remote Learning Arrangements for w.b. 22nd February 2021:

Live Learning Sessions

Time	Subject	Access
9.00am	Maths	20 minute live lesson introduction. 40 minutes for assignments to be completed independently.
10.40am	Reading	20 minute live lesson introduction. 30 minutes for assignments to be completed independently
11.40am	English	20 minute live lesson introduction. 30 minutes for assignments to be completed independently
12.00pm	Introduction to afternoon	10-minute introduction to the afternoon tasks. Children to complete the assignments independently during the afternoon.

**When accessing live sessions, please ensure that the Home School Agreement is being followed.*

Daily Timetable

In addition to the live teaching session timetable above, a weekly timetable will be uploaded to the Files section of Teams which will outline additional tasks that your child will need to complete. A copy of this has also been inserted below for your reference.

w.b. 22.02.21	Times Tables Rockstars	Purple Mash/Computing	Topic lesson 1	PHSE/Wellbeing
Mon	<p>Challenge yourself to some times tables challenges.</p> <p>Don't forget to look out for tournaments set by your teachers</p> <p>https://play.ttrockstars.com/auth/school/student</p>	<p>Spellings</p> <p>Complete the spellings quiz on purple mash.</p> <p>This will be set as a to do on your account.</p>	<p>Science</p> <p>https://teachers.thenational.academy/lessons/what-are-the-key-parts-of-a-healthy-diet-60wkgr?from_query=animals+including+humans+healthy+diet</p> <p>Please complete the set assignment on TEAMS.</p>	<p>Mr Worton and Mr Boneham's workout.</p> <p>Please see the set assignment.</p>
Tues	<p>Challenge yourself to some times tables challenges.</p> <p>Don't forget to look out for tournaments set by your teachers</p> <p>https://play.ttrockstars.com/auth/school/student</p>	<p>Spellings</p> <p>Complete the spellings quiz on purple mash.</p> <p>This will be set as a to do on your account.</p>	<p>MFL</p> <p>https://www.youtube.com/watch?v=TZ0bPXFHiiY</p> <p>Please complete the set assignment on TEAMS.</p>	<p>Cosmic Yoga</p> <p>https://www.youtube.com/watch?v=7NWzS2xzil4</p>
Weds	<p>Challenge yourself to some times tables challenges.</p> <p>Don't forget to look out for tournaments set by your teachers</p> <p>https://play.ttrockstars.com/auth/school/student</p>	<p>Geography</p> <p>Cities in the UK.</p> <p>Complete the to do activity on Purple Mash.</p>	<p>RE</p> <p>https://www.bbc.co.uk/bitesize/clips/zgyr87h</p> <p>Please complete the set assignment on TEAMS.</p>	<p>Reading for pleasure</p> <p>Pick a book and sit somewhere quietly within your house and read the book for 30 minutes.</p>
Thurs	<p>Challenge yourself to some times tables challenges.</p> <p>Don't forget to look out for tournaments set by your teachers</p> <p>https://play.ttrockstars.com/auth/school/student</p>	<p>History</p> <p>Research your local area.</p> <p>http://www.historywebsite.co.uk/articles/Wednesfield/nineteenth.htm#:~:text=Wednesfield%20was%20still%20mainly%20agricultural,England%20School%20at%20Wood%20End.</p>	<p>Music</p> <p>https://classroom.thenational.academy/lessons/to-understand-how-to-maintain-the-pulse-using-the-voice-and-body-60up2d</p> <p>Please complete the set assignment on TEAMS.</p>	<p>Mr Worton and Mr Boneham's workout.</p> <p>Please see the set assignment.</p>

		https://www.visionofbritain.org.uk/place/222 https://www.francisfrith.com/uk/wednesfield Create a tourist leaflet to encourage people to visit your local area. This will be set on Purple Mash.		
--	--	---	--	--

****Staff will be available, contactable via the year group email, 8.30am-3.30pm Monday to Thursday and 8.30am-12.30pm on a Friday.***

In addition to the activities outlined within our timetable above, please look out for Mr Boneham's sports videos for you to join in with. We will share these on our Teams page each Monday and Thursday.

Reminder: Remote Learning Home School Agreement (reminder of what you have previously signed and agreed to if your child is partaking in live learning sessions):

School will...

- Provide a mixture of live lessons, independent activities and other relevant tasks (i.e on Purple Mash, Times Table Rockstars) to continue learning at home
- Respond to completed assignments/tasks through Teams and Purple Mash
- Provide appropriate tasks for pupils who have an IEP or are on an EHCP
- Contact pupils who do not log in to live lessons to check in on them and their family
- Offer pupils the opportunity to ask for extra help if they do not understand
- Ensure that staff are available between 8.30am and 3.30pm to support with any home learning issues— please email the year group email address to request support.

Pupils will...

- Attend all live lessons unless they have a genuine reason that they are unable to. Please be aware that pupils will be visible to and heard by their year group peers and school staff when in a live session
- Leave profile pictures as initials so that they are easily identifiable in the lesson
- Find a quiet place to join their live lesson and have a pencil and paper to make jottings
- Use the 'Raise your hand' and Chat function to participate in the lesson
- Remain on mute unless the teacher asks for them to unmute
- Blur their backgrounds
- Focus on learning during the live lesson
- Complete Purple Mash and other follow-up activities to practice skills
- Use the chat function for learning ONLY, this is not a social media chatroom
- Remember class expectations still apply - always adhere to the School Behaviour Policy.

Parents/Carers will ...

- Ensure their child is following the daily timetable and completing their work to avoid more learning time loss
- Let the school know if their child has any technical issues with accessing online learning during isolation
- Report any absences as usual, via the school office—including COVID 19 symptoms or positive test results for the child or someone within the household
- Ensure their child only uses the platforms for educational purposes
- Monitor the use of their devices for access of other online materials and apps
- Ensure that the *live Teams sessions are not recorded or photographed* in any way.

Please email the following statement into your child's year group email address: ph.y3homelearning@perryhallmat.co.uk

"I, the parent/carer, and my/our child, _____, agree to all the statements outlined in the Remote Learning Home School Agreement."

**You only need to email the above permission statement if you have not already done this previously.*

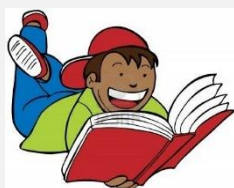
Year 3 - Spring Term – Rock Stars – How was the Earth created?

This grid outlines the knowledge and skills that Year 3 children will gain throughout this term's topic.

As readers we will:

Investigate Mary Annings text – A Dragon in the Rocks. Additionally, we will be looking at a range of fiction and non-fiction texts, and will be exposed to poetry for the first time. We will be using our reading domains to help us answer different types of questions.

We will be reading Stone Girl, Bone Girl – A story of Mary Anning of Lyme Regis by Laurence Anholt. In addition to this we will continue to use the MYON app to support with reading. Please remember to let us know when you have read ten books and we will send you a certificate.

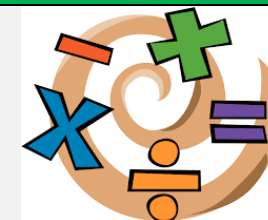


As mathematicians we will:

Be looking at the four operations (addition, subtraction, multiplication and division). We will be moving towards the more formal methods of these operations. We will also be focussing on applying these skills to be able to answer different types of problem solving and reasoning questions.

We will be working on fractions and how to find a fraction of a shape and quantity. We will also be ordering fractions and finding equivalent fractions.

Hopefully we will also be covering the topic of time. We will be covering reading and writing the time in five minute intervals and using analogue and digital time.



As writers we will:

Be reporting on a range of historical events through different media sources. We will be writing a newspaper report on the beginning of Earth, and we will be writing about famous palaeontologist Mary Anning. We will be recapping previous skills and learning new Y3 skills and learning how to use these in different genres of writing.

We will be looking at the genre of biographies and writing our own. This will be linked to the life of Mary Anning.



As scientists we will:

Look at fossils and how they were created. We will be introduced to a famous palaeontologist Mary Anning, investigating her work and lifetime achievements. We will be using different ways to research about Mary Anning linking our Science to Computing.

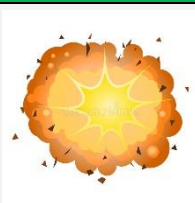
We will be looking at a new topic of Animals including humans. We will be particularly looking at muscles and movement including skeletons and exoskeletons in fossils.



As historians we will:

Be looking into the creation of Earth and how it has changed since it began. We will be place major historical events on a timeline to gain a greater understanding. We will also link some of our History to Computing.

We will be learning about the history of our local landmarks.



As geographers we will:

Be looking at the local area using OS maps and grids. We will also look at what features our local area has and how these are identified on maps.



As designers we will:

Be creating our own fossils linked to science. We will use plaster of paris to create these. We will design our own fossils after researching them , make them and then evaluate what went well and what we could do better next time.



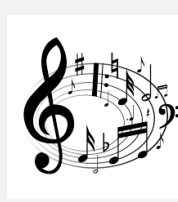
As artists we will:

Be focusing at different sketching techniques and using these to make observational drawings linked with Science. We will have a go at drawing fossils and the different details that they each have.



As musicians we will:

Be looking at musical elements such as pitch, tempo and rhythm and how they vary between different genres of music. We will be comparing these and trying to copy the beat of the music using different body parts e.g. clapping, tapping our shoulders and knees.



In PE we will:

Be learning through competitive games such as badminton, basketball, cricket, football, hockey, netball, rounders and tennis. We will learn the rules of these games and learn how to play as a team and ensure that we understand that taking part is the main lesson that we learn.



We will be completing and Mr Worton's and Mr Boneham's PE challenge alongside using Mr Boneham's PE videos.

In computing we will:

Use different media sources to create informative documents linked with our other core subjects. We will link our topic of rocks to create timelines, fact files and posters.



In Spanish we will:

Learn different greetings including single words and phrases. We will also look at the correct pronunciation by using videos to help us.



In RE we will:

Investigate and compare the Hindu and Sikh religion. We will look at how these religions began, their special places, sacred books and the celebrations each religion celebrates.



We will focus on the religion Sikhism and then compare Hinduism and Sikhism.