

Year 6

Remote Learning Arrangements during School Closure and Half Termly Topic Grid

School Closure Information:

Sadly, the number of cases of coronavirus in Wolverhampton has continued to rise in recent days, with latest data showing an infection rate of 530 people per 100,000 in the city – the highest in the region. The city is also seeing a very high positive test rate of 23% which is similar to many areas of London and the South East.

With this information in mind, Perry Hall MAT Trust Board have made the decision that all Wolverhampton schools within our Trust are to remain closed for the beginning of the new term. From Tuesday 5th January until Friday 8th January, these schools will be closed to all children, apart from those classed as vulnerable and whose parents/carers are critical workers.

The plan is to review the situation again on Thursday 7th January to make a decision on opening our school for the following week. This will be announced to you all in the morning of Friday 8th January.

Year Group Email Address:

Reminder, your child's year group email address is:

ph.y6homelearning@perryhallmat.co.uk

Please use this, if you need to make contact with your child's year group staff.



Vulnerable and Critical Worker Children:

Vulnerable children and those who have parents/carers who have expressed themselves as Critical Workers using the survey sent yesterday will be contacted during the day on Monday 4th January, to confirm their child(ren)'s attendance in school.



Remote Learning Arrangements:

Live Learning Sessions

Time	Subject	Access
9.00am – 9.15am	Registration	Teams 15 minute live registration.
9.15am - 10.15am	Maths	Teams 20 – 30 minute live lesson. 30 minutes for assignments to be completed independently.
10.25am - 11.10am	Reading	Teams 20 – 30 minute live lesson. 20 minutes for assignments to be completed independently
11.20am - 12.10pm	English	Teams 20 – 30 minute live lesson. 30 minutes for assignments to be completed independently
1.00pm – 1.15pm	Registration & Afternoon Timetable	Teams 15 minute live instruction for the afternoon learning.

**When accessing live sessions, please ensure that the Home School Agreement is being followed*

(see next page as a reminder).

Weekly Timetable

In addition to the live teaching session timetable above, a weekly timetable will be uploaded to the Files section of Teams which will outline additional tasks that your child will need to complete. A copy of this has been inserted below for your reference.

Week Beginning 04.01.21	Times Tables Rockstars	Handwriting & Spelling	Topic Session 1	Topic Session 2	PHSE / Wellbeing
Tues	Challenge yourself to some Times Tables challenges. Don't forget to look out for tournaments set by your teachers https://play.trockstars.com/auth/school/student	Choose 5 words from the Year 5 / 6 spelling list and complete the 'Look, Say, Cover, Write, Check' activity. Now write these words in sentences, using the appropriate context, in your neatest handwriting.	Art Complete a research activity on the famous artist: Salvador Dali.	RE Using the images of artefacts, can you decide what each may be used for. Hint: All are used within the Jewish faith.	PSHE Watch the video: https://www.youtube.com/watch?v=tnqVTwuUJjc Create our 10 online learning rules!
Weds			History & Geography Research the 6 main leaders of World War 2: Winston Churchill, Joseph Starling, Theodore Roosevelt, Adolph Hitler, Benito Mussolini and Tojo Hidecki. Identify each leader's country on a world map.		PE Complete a work out on: https://www.youtube.com/watch?v=d3LPrhIOv-w Now, create your own 15 minute workout for a friend
Thu			Science Watch the video: https://classroom.thenational.academy/lessons/what-are-the-key-parts-of-a-healthy-diet-6Qwkgr Complete the activity on what makes a healthy diet.	DT Time to get busy in the kitchen for this activity. You have a choice of two recipes to follow and then you need to write out your method.	PSHE Using 'The Pledge of Kindness' poem given, write your own poem on kindness.
Fri	<i>Remember, we finish at 1:20pm on a Friday, therefore there is no set learning on this afternoon.</i>				

***Staff will be available 8.30am-3.30pm Monday to Thursday and 8.30am-1.20pm on a Friday.**

Reminder: Remote Learning Home School Agreement (reminder of what you have previously signed and agreed to if your child is partaking in live learning sessions):

School will...

- Provide a mixture of live lessons, independent activities and other relevant tasks (i.e on Purple Mash, Times Table Rockstars) to continue learning at home
- Respond to completed assignments/tasks through Office 365 and Purple Mash
- Provide appropriate tasks for pupils who have an IEP or are on an EHCP
- Contact pupils who do not log in to live lessons to check in on them and their family
- Offer pupils the opportunity to ask for extra help if they do not understand.

Pupils will...

- Attend all live lessons unless they have a genuine reason that they are unable to. Please be aware that pupils will be visible to and heard by their year group peers and school staff when in a live session
- Leave profile pictures as initials so that they are easily identifiable in the lesson
- Find a quiet place to join their live lesson and have a pencil and paper to make jottings
- Use the 'Raise your hand' and Chat function to participate in the lesson
- Remain on mute unless the teacher asks for them to unmute
- Blur their backgrounds
- Focus on learning during the live lesson
- Complete Purple Mash and other follow-up activities to practice skills
- Use the chat function for learning ONLY, this is not a social media chatroom
- Remember class expectations still apply - always adhere to the School Behaviour Policy.

Parents/Carers will ...

- Ensure their child is following the daily timetable and completing their work to avoid more learning time loss
- Let the school know if their child has any technical issues with accessing online learning during isolation
- Report any absences as usual, via the school office—including COVID 19 symptoms or positive test results for the child or someone within the household
- Ensure their child only uses the platforms for educational purposes
- Monitor the use of their devices for access of other online materials and apps.

Please email the following statement into your child's year group email address:

"I, the parent/carers, and my/our child, _____, agree to all the statements outlined in the Remote Learning Home School Agreement."

**You only need to email the above permission statement if you have not already done this previously.*

In addition to this, parents/carers must ensure that the *live Teams sessions are not recorded or photographed in any way.*

Year 6 - Spring 1 – Dictators – What is a dictatorship?

This grid outlines the knowledge and skills that Year 6 children will gain throughout this half term's topic.

As readers we will:

Focus on two particular reading domains: retrieval and inference. We will be using key strategies such as skimming and scanning, looking for clues in the text and reading between the lines to pull key information from a number of topic-based books. We will also be using a range of non-fiction texts to put our topic of Dictatorships into a historical context.

As writers we will:

Explore the world of William Shakespeare through one of his classic tragedies – Macbeth. Following on from this, we will be delving back into our narrative work supported by a range of exciting visual literacy resources.

As historians we will:

- Place key events of WW2 on a timeline
- Research Adolf Hitler and his rule
- Research the local impact of WW2



As geographers we will:

- Identify allied and axis forces and their movements
- Identify areas targeted by the Luftwaffe

As musicians we will:

- Develop an understanding of the music played and listened to during WW2.
- Compare and contrasting UK and American music played during WW2.

As artists we will:

- Research WW2 propaganda posters
- Create a mood board to practise ideas
- Generate our own propaganda posters



In computing we will:

- Continue to develop our programming skills



In Spanish we will:

- Develop our linguistic skills by focusing on days of the week and months of the year

As mathematicians we will:

Focus initially on consolidating our understanding of place value by focusing on fractions, decimals and percentages. Following on from this, we will be moving onto looking at geometry and the properties of 2D and 3D shapes.

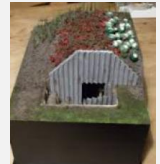


As scientists we will:

Continue to look at the human body by focusing on the respiratory and digestive systems. We will be exploring how nutrients are absorbed by the body and how they are used.

As designers we will:

- Research shelters
- Plan, design, create and evaluate Anderson shelters considering different materials and their appropriateness



In PE we will:

- Focus on a variety of invasion games to develop our attacking and defending skills in a competitive situation.



In RE we will:

- Explore religious expression
- Identify similarities and differences between Judaism and Christianity

