

WELCOME TO Year 2 2020-2021



Part of Perry Hall Multi-Academy Trust
Together We Succeed





Schools Within Perry Hall Multi-Academy Trust

The Trust was set up in 2013

At present we have six schools within our trust



TEACHING SCHOOL

We are a Primary-only Trust and believe in giving all of our children a first class education



School Leadership Team



Mrs AK Cheema
OBE
CEO of the Trust



Mr D Asbury
Executive Headteacher
for the Trust



Miss R Kohli
Perry Hall Head Teacher
& Executive Headteacher for the
Trust



Mr D Tarbuck
Chair of Governors



Mrs C Gibbins
Deputy Head



Mrs M Dodd
Assistant Head



Mr S Clarke
Assistant Head



Mrs R Merricks
Senior Teacher



Mrs N Heer
Safeguarding, Inclusion
and Teaching Assistant
Training Manager



Mrs C Russell
SENCO



Safeguarding Team



A Place to Grow



Miss R Kohli
Head Teacher



Mrs N Heer
Safeguarding, Inclusion
and Teaching Assistant
Training Manager



Mrs C Gibbins
Deputy Head



Mrs M Dodd
Assistant Head



Mr S Clarke
Assistant Head



Mrs C Russell
SENCO

Our Trust Safeguarding Policy can be found on the school website :

<https://www.perryhall.co.uk/>

If you have any concerns about the welfare of your child please come and talk to us



Inclusion Team



Miss R Kohli
Head Teacher



Miss A Meredith
Assistant Educational
Psychologist



Mrs C Russell
SENCO



Mrs N Heer
Safeguarding,
Inclusion and
Teaching Assistant
Training Manager

Special Educational Needs policy and SEN Information Report can be found on the school website :

<https://www.perryhall.co.uk/>

The school follows the Local Authority recommended guidelines.

Core Values



Perry Hall Primary School

A place to grow

Go for it!

Respect everyone

Overcome obstacles

Welcome all



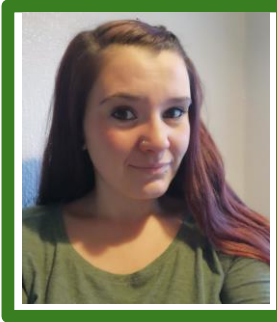
A Place to Grow

Perry Hall Primary School:
A place to...





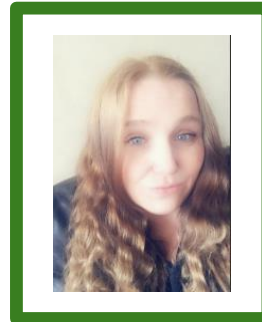
Year 2 Team



Miss L Taylor
Class Teacher



Michelle Dodd
Assistant Head
Phase leader
EYFS & KS1



Mrs C Bellingham
Teaching Assistant



Miss S Bailey
Class Teacher

The Curriculum



A Place to Grow

Parents and carers will receive a termly curriculum newsletter at the beginning of each term. These will also be uploaded onto our school website. Please note due to the current circumstance the first half term will be based on a recovery curriculum developed to support pupils in refreshing, revisiting and regaining confidence in the skills our children have missed during lockdown.

The possible topics for next year will be:

The possible topics for next year will be:

Autumn 2	Spring	Summer
Bright Lights, Big City (London)	Super Heroes vs Super Villains	Commotion in the Ocean

- Staff work as team - planning together, constantly sharing, so the whole team are aware of all of the children.
- Whole school long term plans can also be found on the website.
- All trips will need to be paid for in full before the trip take place. Trips will unfortunately be cancelled if sufficient funds are not collected.
- Clubs will available later in the year, a letter will be sent out during the Autumn Term to confirm what will be on offer and also term dates.

Setting and Groupings



Maths

This year, year 2 will be working in mixed groups for Mathematics. The children will be split into 3 groups, which will be consistently taught by the same members of staff.

English

Similarly to Mathematics, English will be taught in 3 mixed sets. Each set will deliver the same planning to ensure consistency across the year group.

Science and Foundation Subjects

During Topic this year, children will be taught in their classes each afternoon. Support may be given in smaller groups should this be needed.



There may be times when your child will receive additional support with their learning – interventions take place for all abilities. These interventions ensure all children make the necessary progress. During these interventions every effort is made to ensure that children don't miss out on any parts of the curriculum.



Assessment



Throughout the year we will be assessing your child's progress to ensure that they are working to their best possible potential.

Due to the amount of time our children have not been in school because of the pandemic, during the first term we will be carrying out baseline assessments to support us in enable us to address all gaps in their knowledge and skills through the curriculum we provide.

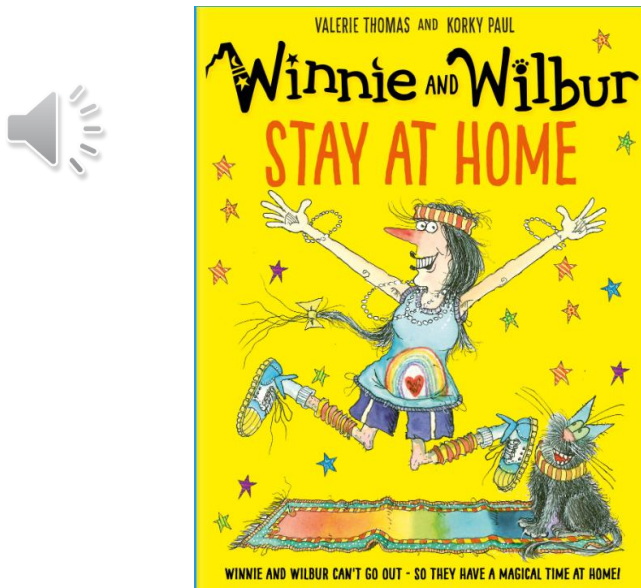
It is expected that your child will be working securely within their age-related band by the end of the year:

- Year 1 - Stage 1 Secure
- **Year 2 - Stage 2 Secure**
- Year 3 - Stage 3 Secure
- Year 4 - Stage 4 Secure
- Year 5 - Stage 5 Secure
- Year 6 - Stage 6 Secure

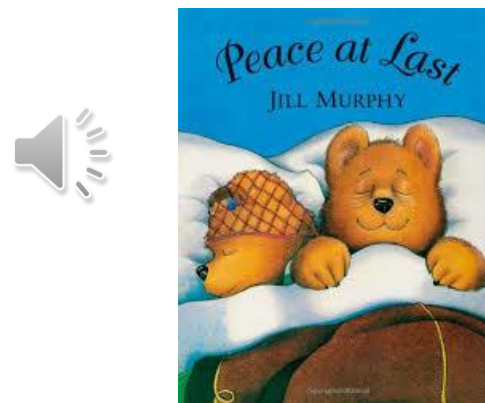


A reading challenge for you

- During the Summer holiday, Year 2 staff would like you to read the following books. Are you up to the challenge?



<https://www.oxfordowl.co.uk/api/interactives/30463.html>



<http://www.lovemybooks.co.uk/peace-at-last>



<https://www.youtube.com/watch?v=QDSUsYoCiC0>

All about me

Create a project all about yourself ready for your new teacher. This can be done as a poster, fact file or anything else you think would be interesting.

Remember to include lots of information about yourself such as what you like/dislike, what you are good at, what new things you would like to try and anything else you think your new teacher may find useful to know.

We look forward to seeing your projects and learning all about you.

Year 2



2020/2021

Holiday Transition Activities

Please send any of your completed tasks by Tuesday 1st September 2020.

Email:

ph.y2homelearning@perryhallmat.co.uk



Go on a walk and collect anything you see. Using the items you find, can you make a picture of yourself?
Get creative!



A Place to Grow

Please send any
of your
completed tasks
by Tuesday 1st
September
2020. Email:

ph.y2homelearning@perryhallmat.co.uk

Holiday Fun!

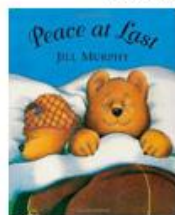
Build memories with your family and create a picture collage completing the following activities:

- 🌈 Create a puppet show for others.
- 🌈 Go for a picnic.
- 🌈 Do some gardening.
- 🌈 Go on a bike ride.
- 🌈 Play a game of football.



Summer Reading Challenge

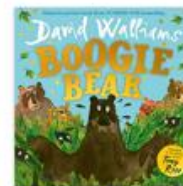
Your Year 2 teachers have been busy reading the books below. See the links on the school website to hear them read the first couple of pages!



Peace at Last



Goldilocks and just the
One Bear



Boogie Bear

By Jill Murphy

By Leigh Hodgkinson

By David Walliams

Your challenge is to read the same books and vote for your favourite.

Remember to think of 3 reasons why! Send your answers to the Year 2 email address above by the First Day back after the holiday!

The Year 2 Perry Hall Bake off Challenge!

Design a cake or cupcakes on a piece of paper. Label it with all the ingredients and topping you would like. Then take a picture and send it into the Year2 email address. A winner from each class will be chosen.





Timetabling

Activity
The timetable will vary throughout the week
Registration and Start Of Day Activities (SODA time)
Spelling Activities
Maths
Break
Guided Reading / Comprehension
English
Lunch
Afternoon Curriculum lessons
End of day

Please note:

Due to government guidelines for schools in September 2020, timings will be different for each year group to ensure there are staggered start times, breaks, lunches and collection at the end of the day.

- **Bubble group** – Pupils will remain in a year group ‘bubble’. They will stay with their group at all times during the day to minimise contact between children across school.
- **Lunchtime** - Children can either bring in a packed lunch from home or can order a school lunch (payable via ParentPay, if not FSM). Children with packed lunches will eat in their classrooms and surfaces will be wiped regularly. School lunches will be eaten in the dining hall.
- **Break times** - All break times will be staggered for each year group. Please send your child with a healthy snack for their morning break time.
- **Face masks** - If parents and children are travelling to school on public transport, current government guidance states that face masks must be worn (with the exception of children under 11 years old). When arriving at school, children will need to remove their face masks. Please ensure that your child(ren) are shown how to do this correctly (without touching the front of the mask and their face). Face masks will need to be placed in a disposable bag and taken home with their parent.
- **Risk assessments** – The most up to date risk assessments will be uploaded onto the website by the 1st August.





Lunchtime



Our Lunchtime Team			
Mrs H Moore – Infant Senior supervisor		Mrs T Richards - Junior Senior supervisor	
Mrs Shackleton	Mrs. Guy	Mrs Toft	Mrs Stanley
Mrs Simpson	Mrs Thompson	Mrs Robbins	Miss Poutney
Mrs Kaur	Mrs Monk	Mrs Stanley	Mrs Taylor
Plus :			
Mr. Boneham	Mrs Withington	Mrs Gaunt	A Senior Leader every day
<p>Mr. Boneham, our sports coach, and a member of the Senior Leadership Team are always on duty at lunchtimes and available for all children.</p> <p>The activities available include the Play Pod, sports equipment, sports activities led by the sports coach, plus free play.</p> <p>Each bubble group will have their own set of equipment which will be wiped down after use.</p>			



Healthy Eating

The Government says that : Food served/consumed in schools and academies in England must meet the school food standards so that children have healthy, balanced diets.

The food standards states the following (*which applies across the whole school day*):

Food:

- No confectionery, chocolate and chocolate-coated products. Desserts, cakes and biscuits are allowed at lunchtime. They must not contain any confectionery.
- No more than two portions a week of food that has been deep-fried, batter-coated or breadcrumb-coated

Drinks:

- Plain water (still or carbonated)
- Lower fat milk or lactose reduced milk
- Fruit or vegetable juice
- Plain soya, rice, oat drinks or yoghurt drinks



Our 'Open-door' Policy

If you have any concerns or worries please come and see us.

Due to government guidelines for schools in September 2020 it is important to note that **the office will be taking phone calls only to avoid congestion in the reception area.**

Parents can speak to the office and make an appointment to see a staff member via telephone call or book in a face to face meeting.

- **Please inform us immediately if there are any changes to your child's:**
 - Contact details
 - Medical information
 - The named person for collecting your child
- **Please note - when collecting your child, all adults collecting (including the main carer) must know your child's password and also have photo ID with them. Your child will not be released without this. If someone different is collecting, please ensure the school is informed before 2.45pm.**
- Please bare with us while our staff familiarise themselves with you during the first few weeks.



“Open-door” Policy

Concerns

If you are concerned about anything regarding your child please tell us.

Can we take this opportunity to express from our Board of Governors and Trustees that we do not accept or tolerate any form abuse from any member of the public. If this occurs you will be asked to leave the premises.

Parent/Visitor Conduct On Site

Parents / visitors are expected to treat all staff and children in a respectful way when on our school site. Any threatening, abusive or violent behaviour against any staff member or child is taken extremely seriously. Examples of such behaviour are below:

- raised voices
- shouting at staff
- swearing
- intimidating staff
- rallying other parents to become involved in intimidating behaviour
- publically voicing unsubstantiated claims about staff, children or the Academy.
- using racist or sexist terms
- using violence
- taking alcohol or drugs on the premises
- willful damage to school property
- theft
- threats or threatening behaviour
- altercations (verbal or physical towards other parents whilst on the school site)

This list is not an exhaustive list but seeks to provide illustrations of such behaviour that is not acceptable in our school.

Anyone behaving in this way will be asked to leave the premises and the police will be called if verbal or physical harassment occurs. If necessary, action will be taken to ban anyone behaving in such a way from the school grounds.





Free School Meals



If you think your child may be entitled to either free school please contact the school office or **Wolverhampton City Council** for further details.

- Although all KS1 children are entitled to universal free school meals it is important that you continue to claim for free school meals.
- Further information can be obtained from the school office or online at <http://www.wolverhampton.gov.uk/freeschoolmeals>

School Behaviour Policy

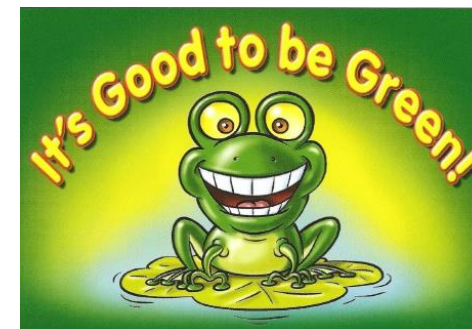
Our school behaviour policy is available on the school website.

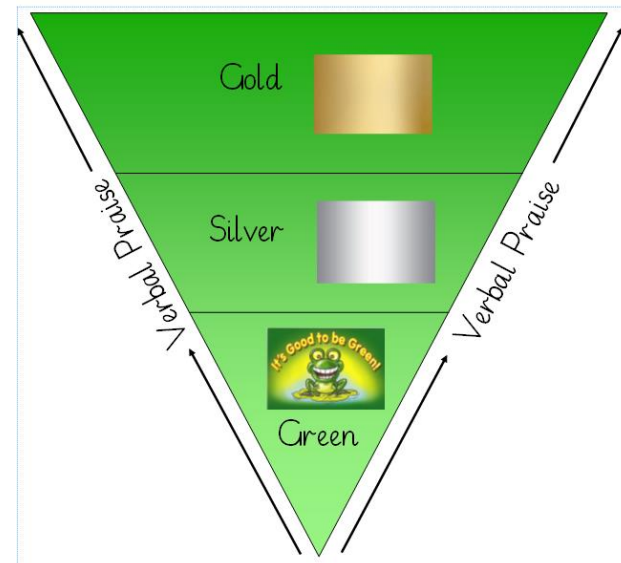
You may also request a paper copy via the school office.

We aim to foster an environment which is rich in learning, based upon the diversity of the school. The expectations for behaviour should reflect this, inclusive of the children, parents, staff and the wider community. The Governing Body and the staff accept this principle and seek to create an environment which encourages and reinforces good behaviour.

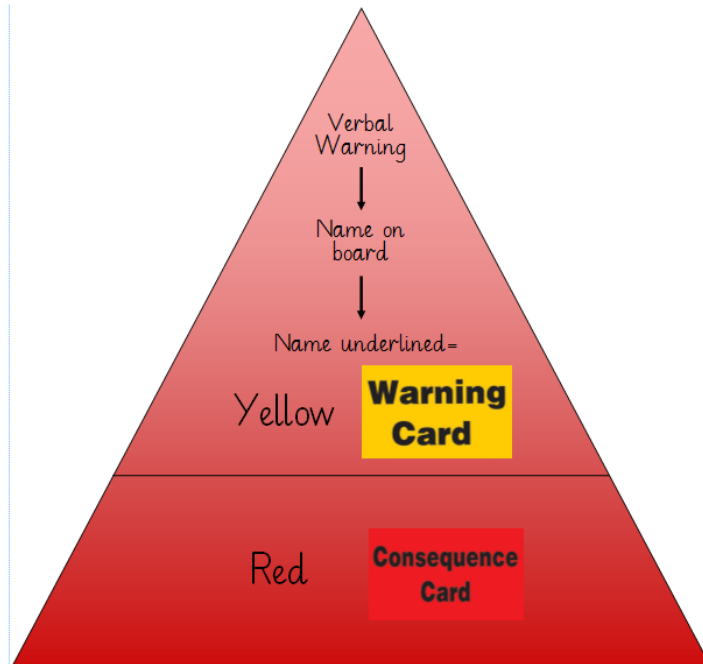
Please note:

Due to changing government guidelines as a result of the pandemic, we will ensure we communicate any changes made to our behaviour policy throughout the year.





IT'S GOOD TO BE GREEN!



IT'S GOOD TO BE GREEN

If you end your day on a 'Gold' you will receive a certificate via email.

If you remain 'Green' all week (ending every day either on a green, silver or gold) you will receive some 'Good to be Green' time at the end of each week.

If you receive a yellow you need improve your behaviour choices.

If you receive a red:

- You will sit on the reflection bench (with a member of staff) during your next playtime and complete a reflection sheet.
- Your grown-ups will be informed at the end of the day via phone or email.

If you receive a purple you will:

- Speak with a senior leader immediately.
- Miss your lunchtime.
- Be issued with a behaviour report.

Your grown-ups will be informed by phone.



A Place to Grow



A Place to Grow

NON NEGOTIABLES

You will automatically receive a PURPLE CARD for:

- Deliberate physical contact (including retaliation)
- Disrespecting any adult in school
- Swearing
- Racism
- Stealing.



We have temporarily adapted our 'Good to be Green' behaviour system so that it advocates social distancing and minimises risk.

We will continue to strive to adopt a fair approach to behaviour management within our learning spaces, using positive praise to help keep behaviour on track.

As usual, each day, children will restart on a blank (in the middle of the two triangles). If rules and core values are being adhered to then children will follow the green triangle. However, if rules and core values are not adhered to, children will follow the red triangle.

Rules Around School



Class Rules

- These will be created with the children in September.
- Monitors will also be chosen in September.

Playground Rules

- To use positive language.
- To play well with others.
- To respect the adults who look after us.
- To stand still and quiet when the bell/whistle goes.
- To place all litter in the bins provided.

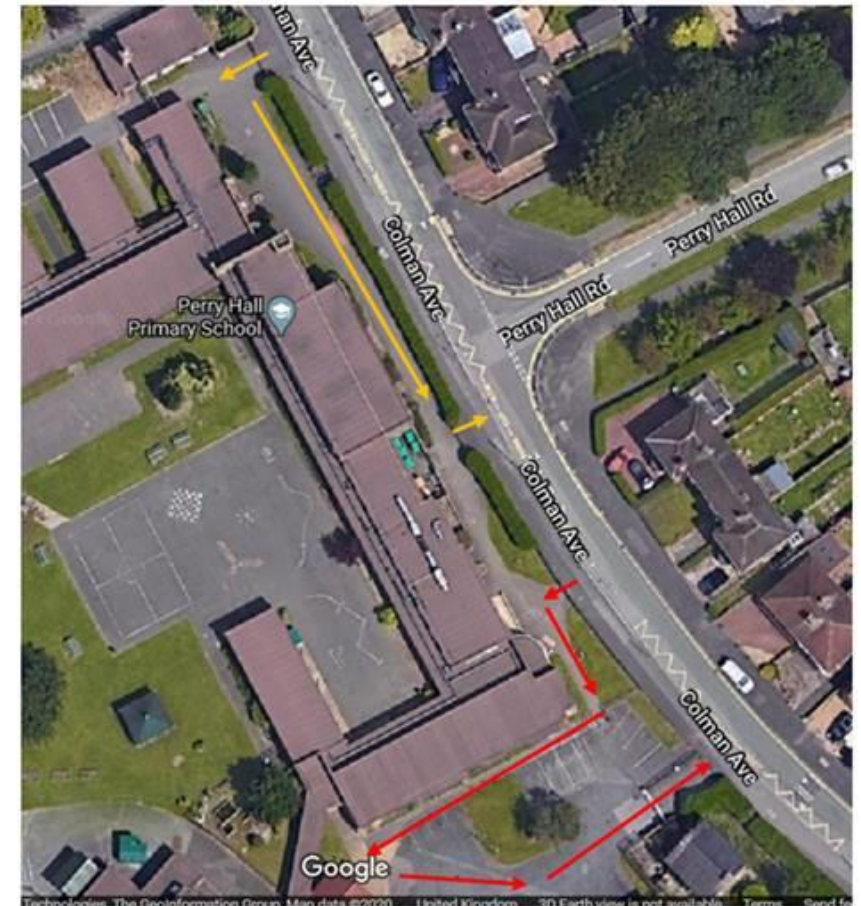


Arrival at school

- Please ensure your child arrives at the allocated time to enable the staggered start to work as smoothly as possible and avoid any disruption to your child's start to the day. Please follow the signs to ensure you follow the one way system and to ensure you stick to your times to ensure government guidance is followed.
- Yellow arrows= KS2 one way system.
- Red arrows= EYFS and KS1 one way system.
- If you are dropping off children in different phases, then please still abide by the different one way systems, i.e. if you drop off a KS2 child first then please exit the site via the KS2 exit and then return back in via the KS1/EYFS entrance at your allocated time.



	KS2 At the KS2 gate (yellow arrows on the map)	KS1 At the doors highlighted below (red arrows on the map)	EYFS At the doors highlighted below (red arrows on the map)
8.30am	Year 3	Year 2 – Red corridor doors to the right of Nursery	
8.40am	Year 4	Year 1 – Door next to Nursery entrance	
8.45am			Nursery – Nursery door Twos – Twos door
8.50am	Year 5		Reception – Early years garden gate
9am	Year 6		





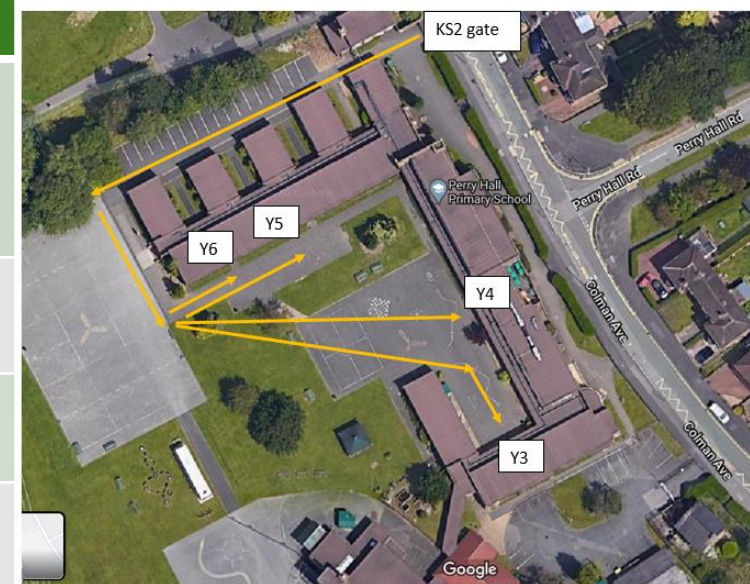
Collection Points

To advocate social distancing, start and finish times will be staggered for each year group. Please ensure you stick to your times to ensure government guidance is followed.



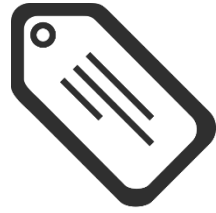
A Place to Grow

Monday to Thursday/ Friday	KS2 from their classroom exits (yellow arrows on the map)	KS1 Same doors as the morning drop offs	EYFS At the doors highlighted below Same doors as the drop offs
3pm / 1pm	Year 3	Year 2 – Red corridor doors to the right of Nursery	Reception – Early years garden gate
3.10pm / 1.10pm	Year 4		
3.15 / 1.15pm		Year 1 – Door next to Nursery entrance	
3.20pm / 1.20pm	Year 5		
3.30pm / 1.30pm	Year 6		Nursery – Nursery door (3.30pm collection Monday to Friday) Twos – Twos door (3.30pm collection)





Label everything!



School Uniform



A Place to Grow

Boys

- Sweatshirt – Dark green
- Shirt – White
- Pullover – Dark green
- Tie – Dark green with yellow stripe, with or without elastic
- Trousers – Grey
- Shoes – Black

Girls

- Blouse – White
- Cardigan – Dark green
- Pinafore – Grey
- Skirt – Grey
- Dress – Green with white check
- Socks – White
- Shoes – Flat , black
- Sandals – Brown, white or grey

Footwear

It is essential that children wear suitable footwear for school that allows their feet adequate room and gives proper support and ventilation. For this reason, please do not send children to school wearing fashion shoes or trainers.

Jewellery

In order to ensure adequate safety standards, particularly in organised games and physical education, children should not wear jewellery, especially earrings while at school. Studs are allowed, but must be removed or covered over for PE and games.

Summer Options

All pupils – White polo shirts

Girls have the option to wear a green and white checked dress

Boys have the option to wear grey shorts

Where to Buy

All items can be purchased from Kids Corner, located on Showell Circus, Low Hill, Wolverhampton.



PE Kit



Our school PE kit for this year includes:

- White T-shirt
- Black jogging bottoms
- Trainers

This year we will be asking children to **come to school wearing the above PE kit on their PE days**. For information on your child's PE day please see the year group bubble flyer.

For health and safety reasons please remove all jewellery and ensure long hair is tied back.

It is very important that your child is in the correct PE kit and footwear for their lesson.



Homework



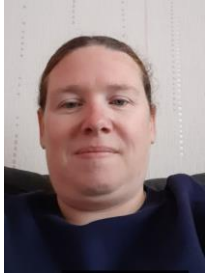
Homework, in the first instance, will be via Purple Mash to limit the number of items going to and from school.

Purple Mash is the creative online space from 2Simple. Purple Mash hosts an exciting mash-up of curriculum focused activities, creative tools, programmes and games to support and inspire creative learning every day. As Purple Mash is online, children can continue their learning at home.

Work will be set by the teacher which can be accessed at home using children's individual logins. Teachers will also be able to respond to completed work.



- More information will be sent in September.



Breakfast Club



At Perry Hall 'Kids Club' we offer both breakfast and after school facilities for children in Nursery up to year 6.

Breakfast club runs between 7.45am until 8.45am and we offer a variety of breakfast choices.

Breakfast club £4.00

Contact Details for Perry Hall Kids Club are:
Mrs Ferguson (breakfast club lead) 01902 558538
Email : phbreakfast-asc@perryhallmat.co.uk



Please note, due to the number of pupils that use this service from across a range of year groups, it is not going to be possible to maintain year group bubbles. Therefore, we intend to use small groups within the provision and aim to reduce the amount of mixing where possible - following government guidance.



After school Club



After school club is split into two sessions. The early session runs between 3.15pm and 4.15pm and the late session is between 3.15pm until 5.55pm. During after school club, the children are offered a range of snacks. We offer a range of fun activities for all ages including arts and crafts, games and outdoor sports.

Please see cost information below:

After-school early session £ 4.00

After-school late session £6.50

Contact Details for Perry Hall Kids Club are:

Miss Parkinson (after-school club lead) 01902 558538

Email address phbreakfast-asc@perryhallmat.co.uk



Please note, due to the number of pupils that use this service from across a range of year groups, it is not going to be possible to maintain year group bubbles. Therefore, we intend to use small groups within the provision and aim to reduce the amount of mixing where possible - following government guidance.

Attendance

Absence and Illness

- If your child is ill whilst at school, we will ring you to collect your child. Please ensure we have current contact details.
- Please call the school office if you know your child will be absent and please ring each following day of the absence.
- Children will go straight to the classroom on arrival. Please make sure your child is on time as lessons start promptly.
- If your child is not collected by the allocated time you will be called.



We will be following the guidance below :

Pupils, family members, staff and other adults should not attend school if they have COVID symptoms or have been tested positive in the past 7 day

- Anyone developing such symptoms during the school day will be sent home, must isolate for 7 days and should arrange a test. Other members of the household (including siblings) should self-isolate for 14 days from when the symptomatic person first had symptoms.
- If anyone becomes unwell with a new continuous cough or high temperature, or has a loss of or change in their normal sense of taste or smell will be sent home and advised to follow Government 'Stay at home' guidance.
- Children unwell with symptoms in school awaiting collection should be moved, if possible to a room where they can be isolated behind a closed door, depending on the age and needs of the child, with appropriate adult supervision. If this is not possible, they will be moved to an area which is at least 2 metres away from other people.
- Any member of staff who has helped someone with symptoms and any pupils who have been in close contact with them do not need to go home unless they develop symptoms themselves. Further advice will be given to individual bubble groups dependent on the external advice given.
- Routinely taking the temperature of pupils is not recommended by Public Health England as this is an unreliable method for identifying Covid-19.



**What
happens if
there is a
case of
coronavirus
in school?**

Attendance



- The school **does not** authorise holidays. However, if you require a leave of absence due to exceptional circumstances please complete the relevant documents.
- If you choose to take your child out of school on holiday during term time, will be class as an unauthorised absence.
- If you take you child out on holiday during term time, a penalty notice of £60 could be imposed per child and per parent. This will be issued by the local authority. For further information please contact the school office.

Attendance

If your child arrives at school after the bell and gate has been closed they will receive a late mark.



If absent:

Once Under 95%
letter a will be sent
from school to
Parents/Carers



Parents/Carers
must contact
school every day
of absence

- Date/Time/Who called/Reason must be recorded



Parents/Carers
must provide
medical evidence
for all absences

- GP appointment card/medication/medication packaging/prescriptions/hospital and appointment letters
- Record on SIMS

Term Dates for 2020/2021



Autumn Term 2020

- **Term Time:** Wednesday 2 September 2020 to Friday 23 October 2020
- **Half Term:** Monday 26 October 2020 to Friday 30 October 2020
- **Term Time:** Tuesday 3 November 2020 to Friday 18 December 2020

Spring Term 2021

- **Term Time:** Tuesday 5 January 2021 to Friday 12 February 2021
- **Half Term:** Monday 15 February 2021 to Friday 19 February 2021
- **Term Time:** Tuesday 23 February 2021 to Thursday 1 April 2021

Summer Term 2021

- **Term Time:** Monday 19 April 2021 to Friday 28 May 2021
- **Half Term:** Monday 31 May 2021 to Friday 4 June 2021
- **Term Time:** Monday 7 June 2021 to Tuesday 20 July 2021

Inset Days

Tuesday 1st September 2020
Monday 2nd November 2020
Monday 4th January 2021
Monday 22nd February 2021
Wednesday 21st July 2021



Important Information



- If your child needs medication, please complete the appropriate form available from the school office.
- All medication must be recently prescribed, clearly labelled and sent into school via the office.
- If your child has an inhaler please ensure a health care plan is completed via the office, it is clearly labelled and sent into school via the office
- Please do not send any type of hand sanitiser gels in to school.
- If you have any questions or queries about you child's medical needs please email the school on the email address below during term time:

phmedical@perryhallmat.co.uk

Please talk to us – tell us if there are any changes.





Any Questions?

For further information please visit our school website

<https://www.perryhall.co.uk/>



If you have any question, please contact the school office on 01902 558538
during term time;

Mrs Cox, Mrs Wootton & Mrs Hughes will be happy to assist you.



THANK YOU



Address

Perry Hall Primary School
Colman Avenue
Wednesfield
Wolverhampton
WV11 3RT

Call

01902 558538

Email

perryhall.groupemail@wolverhampton.gov.uk

Visit

www.perryhall.co.uk



Together We Succeed