



23rd September 2019

Dear Parents/Carers,

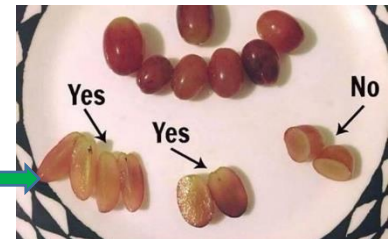
The 30 hour children have adjusted really well to going to the sandwich hall for their lunch. Please ensure your child has a drink on their lunchbox each day. This drink is in addition to your child's water bottle which is kept in the classroom.

The lunch box trolley will be placed outside the classroom door at the end of the day for the parents/carers to collect lunch boxes.

Due to the medical needs of some pupils, **we ask for your support in avoiding products containing nuts to ensure the safety and well-being of all pupils.**

Grapes are a fantastic healthy option. However, potentially they may create a choking hazard. It is highly recommended that grapes given to young children should be sliced.

See photo for suggested ways to slice grapes.



Yours sincerely

Miss R Kohli

Executive Headteacher

Perry Hall Primary School
Colman Avenue
Wednesfield
Wolverhampton
WV11 3RT



Email: perryhallprimaryschool@wolverhampton.gov.uk
Web: www.perryhall.co.uk

Executive Headteacher
Miss R Kohli

Chief Executive Officer
Mrs A Cheema (OBE)

National Teaching School
designated by



National College for
Teaching & Leadership

