

### Important please note



From Monday 26th, children will no longer be allowed to bring footballs to school. Children that play football at lunchtime will be provided with a ball from school.

Children and adults should not be riding bikes or scooters on school premises, including at the end of the day when children are being collected. Please ensure that bikes and scooters are pushed sensibly when on school grounds.



## Up coming events



Please see below the dates for Summer 2  
(New dates in bold)

- **Year 5 NSPCC workshop— Tuesday 27.06.17—(see letter 20.06.17)**
- Reception Assembly: Wednesday 28th June at 2:30pm
- **Year 6 NSPCC workshop— Wednesday 28.06.17 (see letter 20.06.17)**
- 4CF Class Assembly: Thursday 29th June at 2:30pm (see letter 24.05.17)
- 1HD Class Assembly: Wednesday 5th July at 2:30pm
- Year 5 Class Assembly for 5AK parents: Thursday 6th July at 2:30pm
- KS1 Sports Day— Thursday 6th July— (see letter 20.06.17)
- KS2 Sports Day— Friday 7th July— (see letter 20.06.17)
- **Perry Hall PTA Summer Fayre: Saturday 8th July from 12pm—3pm**
- Year 2 Assembly for 2BK parents: Tuesday 11th July at 2:30pm
- Year 2 Assembly for 2KM parents: Wednesday 12th July at 2:30pm
- Year 5 Class Assembly for 5DH parents: Thursday 13th July at 2:30pm
- Early Years Sports Day- Friday 14th July— (letter to follow)
- Year 6 Leaver's Assembly: Wednesday 19th July at 9:30am and 2pm
- Year 6 prom: Wednesday 19th July- 7:30-9pm (see letter 13.06.17)

Last Day of Summer Term: Thursday 20th July for 2's and Nursery Reception, Key Stage 1 and Key Stage 2—Friday 21st July at 1.30pm

Colman Avenue, Wolverhampton, WV11 3RT. Telephone number: 01902558538

School website: [www.perryhall.co.uk](http://www.perryhall.co.uk)

Email address: [perryhallprimaryschool@wolverhampton.gov.uk](mailto:perryhallprimaryschool@wolverhampton.gov.uk)

Headteacher : Miss R Kohli

## Perry Hall News!

Friday 23rd June 2017



A Place to Grow

Welcome to Perry Hall News, a weekly newsletter to celebrate our achievements and keep you up-to-date with upcoming events.

Perry Hall Primary School  
truly ... " A Place to Grow"

After a thorough assessment of the quality of the provision we provide, the skills of our staff and our capacity to support and share good practice with other schools and teaching students, we are delighted to announce that Perry Hall Primary has been designated as a **National Teaching School** by the National College of Teaching and Leadership . We are now one of only 750 Teaching Schools in the country. Thank you to all of our pupils and staff for their continued hard work and commitment to the school. We would also like to thank our parents for their ongoing support.

**National Teaching School**  
designated by



**National College for  
Teaching & Leadership**



**Count down to the PTA's Perry Hall Summer Fayre**

8th July 2016 12.00pm till 3pm

We have 2 weeks until the summer fayre and we have many exciting stalls already booked, including: Games, opportunities to soak the teacher, a bouncy castle, food, refreshments, performances by our children and local dance groups! Remember to tell you friends and family— lets make it an event to remember!

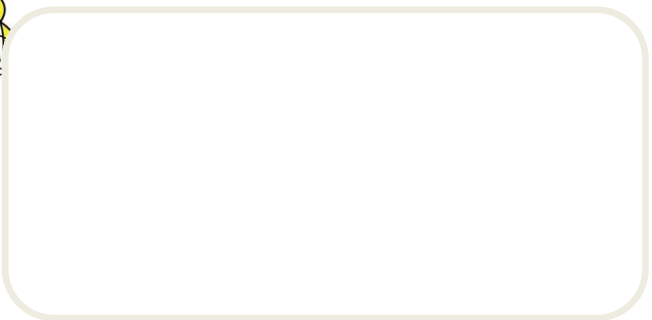
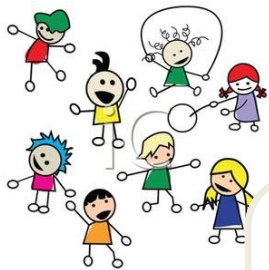
Reminders:




- Any donations, as previously requested, to school as soon as possible
- Any cake donations to be sent in on the morning of the Fayre
- Don't forget to bring socks if children would like to go on the bouncy castle— they will not be allowed to bounce without them .

## Star of the Week!



A child from each class is chosen as Star of the Week for doing something special during the week. It may be related to their work, behaviour and/or their attitudes to learning .

|      |             |     |           |
|------|-------------|-----|-----------|
| TTAM | Ashaan B    | 3DG | Tyler I   |
| TTPM | Jack R      | 4CF | Abigail S |
| NAM  | Alex M      | 4CP | Ethan S   |
| NPM  | Blake P     | 5AK | Jack P    |
| RCR  | Whole Class | 5DH | Roan B    |
| RDS  | Whole Class | 6GM | Maja C    |
| 1HD  | Daisy R     | 6NM | Ellie G   |
| 1ML  | Whole Class |     |           |
| 2KM  | Sophie C    |     |           |
| 2BK  | Charlotte W |     |           |
| 3AJ  | Joel J      |     |           |



**House Points !**

|   |  |
|---|--|
| Yellow Team 62 points   | Red Team 42 points   |
|  Blue Team 24 points |  Green Team 16 points |

Celebrating good work and effort in lessons.



### Last week's attendance

Whole school attendance was 95.4%  
 1st was 3DG with 99.3% attendance  
 2nd was 4CP with 98.7% attendance  
 3rd was 2BK with 98.3% attendance

Well done to all classes



### *Writer of the Week*

|           |             |        |           |
|-----------|-------------|--------|-----------|
| Nursery   | Dylan K     |        |           |
| Reception | Harmony R   | Year 1 | Daniel P  |
| Year 2    | Logan A     | Year 3 | Joel J    |
| Year 4    | Navendeep G | Year 5 | Brandon C |
| Year 6    | Eisha B     |        |           |